

Product datasheet

Recombinant human LDHA protein (His tag) ab93699

画像数 1

製品の概要

製品名	Recombinant human LDHA protein (His tag)
タンパク質長	Full length protein

製品の詳細

由来	Recombinant
由来	Escherichia coli

アミノ酸配列

生物種	Human
配列	MGSSHHHHHH SGLVPRGSH MATLKDQLIY NLLKEEQTPQ NKITVVGVA VGMACAISIL MKDLADELAL VDVIEDKLGK EMDLQHGSL FLRTPKIVSG KDYNVTANSK LVIITAGARQ QEGESRLNLV QRNVNIFKFI IPNVVKYSPN CKLLIVSNPV DILTYVAWKI SGFPKNRVIG SGCNLD SARF RYLMGERLGV HPLSCHGWVL GEHGDSSVPV WSGMNVAGVS LKTLHPDLGT DKDKEQWKEV HKQVVESAYE VIKLKGYSW AIGLSVADLA ESIMKNLRRV HPVSTMIKGL YGIKDDVFLS VPCILGQNGI SDLVKVTLTS EEEARLKKSA DTLWGIQKEL QF

特性

Our [Abpromise guarantee](#) covers the use of **ab93699** in the following tested applications.

The application notes include recommended starting dilutions; optimal dilutions/concentrations should be determined by the end user.

生理活性	Specific activity is > 300 units/mg. in which one unit will convert 1.0 umole of pyruvate to L-lactate and beta-NAD per minute at pH 7.5 at 37°C.
------	---

Activity Assay

Prepare a 1.5 ml reaction mix into a suitable container, adjust to pH 7.5 at 37°C and pre-chill on ice before use: The final concentrations are 100mM Sodium phosphate, 0.12 mM beta-nicotinamide adenine dinucleotide, reduced form, 2.3mM Pyruvate, 0.033% (w/v) bovine serum albumin.

Equilibrate to 37°C and monitor at A340nm until the value is constant using a spectrophotometer.

Add 50ul of recombinant LDHA protein in various concentrations (0.1ug, 0.5ug) in assay buffer.

Mix by inversion and record the increase at A340nm for 5 minutes.

アプリケーション

Functional Studies

SDS-PAGE

Western blot

質量分析

MALDI-TOF

精製度

> 95 % SDS-PAGE.

ab93699 is purified by using conventional chromatography techniques.

製品の状態

Liquid

前処理および保存

保存方法および安定性

Shipped at 4°C. Store at +4°C short term (1-2 weeks). Upon delivery aliquot. Store at -20°C or -80°C. Avoid freeze / thaw cycle.

Preservative: None

Constituents: 20% Glycerol, 0.1M Sodium chloride, 20mM Tris HCl, pH 8.0

This product is an active protein and may elicit a biological response in vivo, handle with caution.

関連情報

パスウェイ

Fermentation; pyruvate fermentation to lactate; (S)-lactate from pyruvate: step 1/1.

関連疾患

Defects in LDHA are the cause of glycogen storage disease type 11 (GSD11) [MIM:612933]. A metabolic disorder that results in exertional myoglobinuria, pain, cramps and easy fatigue.

配列類似性

Belongs to the LDH/MDH superfamily. LDH family.

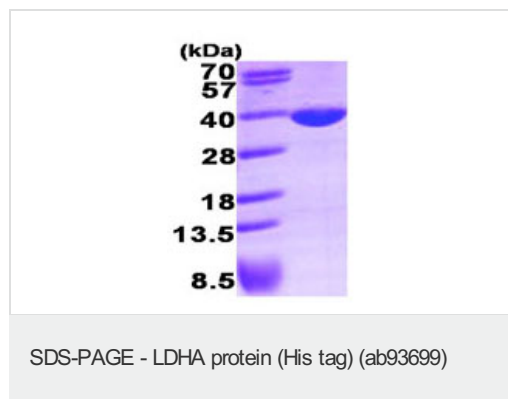
翻訳後修飾

ISGylated.

細胞内局在

Cytoplasm.

画像



15% SDS-PAGE showing ab93699 at approximately 38.8kDa (3μg).

Our Abpromise to you: Quality guaranteed and expert technical support

- Replacement or refund for products not performing as stated on the datasheet
- Valid for 12 months from date of delivery
- Response to your inquiry within 24 hours

- We provide support in Chinese, English, French, German, Japanese and Spanish
- Extensive multi-media technical resources to help you
- We investigate all quality concerns to ensure our products perform to the highest standards

If the product does not perform as described on this datasheet, we will offer a refund or replacement. For full details of the Abpromise, please visit <http://www.abcam.co.jp/abpromise> or contact our technical team.

Terms and conditions

- Guarantee only valid for products bought direct from Abcam or one of our authorized distributors