

Product datasheet

Recombinant human Fibroblast activation protein, alpha ab79623

画像数 2

製品の概要

| | |
|--------|--|
| 製品名 | Recombinant human Fibroblast activation protein, alpha |
| タンパク質長 | Protein fragment |

法規制情報

カルタヘナ法

製品の詳細

| | |
|--------|--------------------------------|
| 由来 | Recombinant |
| 由来 | Baculovirus infected Sf9 cells |
| アミノ酸配列 | |
| 生物種 | Human |
| 領域 | 29 to 760 |
| タグ | His tag C-Terminus |

特性

Our [Abpromise guarantee](#) covers the use of **ab79623** in the following tested applications.

The application notes include recommended starting dilutions; optimal dilutions/concentrations should be determined by the end user.

| | |
|----------|---|
| 生理活性 | Specific Activity: 10.2 pmol/min/μg. Assay Condition: 50 mM Tris-HCl (pH7.5), 10 mM MgCl ₂ , 1 mM MnCl ₂ , 5μM substrate (A-P-AMC), room temperature. |
| アプリケーション | SDS-PAGE Functional Studies |
| 精製度 | > 90 % SDS-PAGE. |
| 製品の状態 | Liquid |

前処理および保存

保存方法および安定性

Shipped on Dry Ice. Upon delivery aliquot. Store at -80°C. Avoid freeze / thaw cycle.

pH: 8.00

Preservative: 1.36% Imidazole

Constituents: 0.64% Tris HCl, 20% Glycerol, 0.64% Sodium chloride, 0.02% Potassium chloride

This product is an active protein and may elicit a biological response in vivo, handle with caution.

関連情報

機能

In association with DPP4 is involved in the pericellular proteolysis of the extracellular matrix (ECM), the migration and invasion of endothelial cells into the ECM. May have a role in tissue remodeling during development and wound healing, and may contribute to invasiveness in malignant cancers.

組織特異性

Fibroblast specific.

配列類似性

Belongs to the peptidase S9B family.

翻訳後修飾

N-glycosylated.

The N-terminus may be blocked.

細胞内局在

Cell membrane. Cell projection > lamellipodium membrane. Cell projection > invadopodium membrane. Found in cell surface lamellipodia, invadopodia and on shed vesicles. Colocalized with DPP4 in invadopodia and lamellipodia of migratory activated endothelial cells in collagenous matrix. Colocalized with DPP4 on endothelial cells of capillary-like microvessels but not large vessels within invasive breast ductal carcinoma.

画像

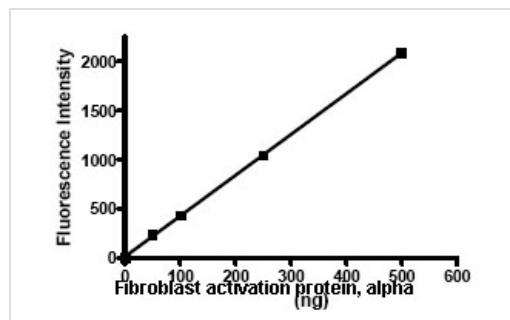
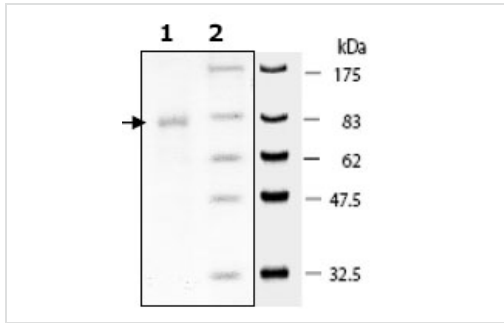


Image showing specific activity of ab79623.

Functional Studies - Fibroblast activation protein,
alpha protein (Active) (ab79623)



SDS-PAGE showing 3ug ab79623 at approximately 85.5kDa.

SDS-PAGE - Fibroblast activation protein, alpha protein (Active) (ab79623)

Please note: All products are "FOR RESEARCH USE ONLY AND ARE NOT INTENDED FOR DIAGNOSTIC OR THERAPEUTIC USE"

Our Abpromise to you: Quality guaranteed and expert technical support

- Replacement or refund for products not performing as stated on the datasheet
- Valid for 12 months from date of delivery
- Response to your inquiry within 24 hours
- We provide support in Chinese, English, French, German, Japanese and Spanish
- Extensive multi-media technical resources to help you
- We investigate all quality concerns to ensure our products perform to the highest standards

If the product does not perform as described on this datasheet, we will offer a refund or replacement. For full details of the Abpromise, please visit <http://www.abcam.co.jp/abpromise> or contact our technical team.

Terms and conditions

- Guarantee only valid for products bought direct from Abcam or one of our authorized distributors