

Product datasheet

Recombinant human ErbB 2 protein ab60866

画像数 2

製品の概要

製品名	Recombinant human ErbB 2 protein
タンパク質長	Protein fragment

法規制情報

カルタヘナ法

製品の詳細

由来	Recombinant
由来	Baculovirus infected Sf9 cells
アミノ酸配列	
アクセッション番号	P04626-1
生物種	Human
分子量	116 kDa
領域	676 to 1255
タグ	GST tag N-Terminus
配列の追加情報	Recombinant fragment, corresponding to amino acids 676-end of Human ErbB 2.

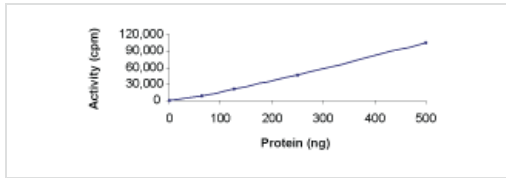
特性

Our [Abpromise guarantee](#) covers the use of **ab60866** in the following tested applications.

The application notes include recommended starting dilutions; optimal dilutions/concentrations should be determined by the end user.

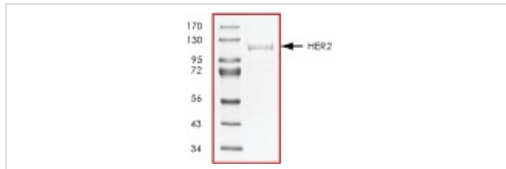
生理活性	Specific Activity: 10 nmol/min/mg.
アプリケーション	SDS-PAGE Functional Studies
精製度	> 90 % SDS-PAGE. Purity: >90% as determined by densitometry.
製品の状態	Liquid

備考	ab204877 (Poly (4:1 Glu, Tyr) peptide) can be utilized as a substrate for assessing kinase activity
前処理および保存	
保存方法および安定性	<p>Shipped on dry ice. Upon delivery aliquot and store at -80°C. Avoid freeze / thaw cycles.</p> <p>Preservative: None</p> <p>Constituents: 25% Glycerol, 50mM Tris HCl, 150mM Sodium chloride, 0.25mM DTT, 0.1mM EGTA, 0.1mM EDTA, 0.1mM PMSF, pH 7.5</p> <p>This product is an active protein and may elicit a biological response in vivo, handle with caution.</p>
関連情報	
機能	<p>Protein tyrosine kinase that is part of several cell surface receptor complexes, but that apparently needs a coreceptor for ligand binding. Essential component of a neuregulin-receptor complex, although neuregulins do not interact with it alone. GP30 is a potential ligand for this receptor. Regulates outgrowth and stabilization of peripheral microtubules (MTs). Upon ERBB2 activation, the MEMO1-RHOA-DIAPH1 signaling pathway elicits the phosphorylation and thus the inhibition of GSK3B at cell membrane. This prevents the phosphorylation of APC and CLASP2, allowing its association with the cell membrane. In turn, membrane-bound APC allows the localization of MACF1 to the cell membrane, which is required for microtubule capture and stabilization. In the nucleus is involved in transcriptional regulation. Associates with the 5'-TCAAATTC-3' sequence in the PTGS2/COX-2 promoter and activates its transcription. Implicated in transcriptional activation of CDKN1A; the function involves STAT3 and SRC. Involved in the transcription of rRNA genes by RNA Pol I and enhances protein synthesis and cell growth.</p>
組織特異性	Expressed in a variety of tumor tissues including primary breast tumors and tumors from small bowel, esophagus, kidney and mouth.
関連疾患	<p>Hereditary diffuse gastric cancer</p> <p>Glioma</p> <p>Ovarian cancer</p> <p>Lung cancer</p> <p>Gastric cancer</p> <p>Chromosomal aberrations involving ERBB2 may be a cause gastric cancer. Deletions within 17q12 region producing fusion transcripts with CDK12, leading to CDK12-ERBB2 fusion leading to truncated CDK12 protein not in-frame with ERBB2.</p>
配列類似性	Belongs to the protein kinase superfamily. Tyr protein kinase family. EGF receptor subfamily. Contains 1 protein kinase domain.
翻訳後修飾	Autophosphorylated. Autophosphorylation occurs in trans, i.e. one subunit of the dimeric receptor phosphorylates tyrosine residues on the other subunit (Probable). Ligand-binding increases phosphorylation on tyrosine residues (PubMed:27134172). Signaling via SEMA4C promotes phosphorylation at Tyr-1248 (PubMed:17554007). Dephosphorylated by PTPN12 (PubMed:27134172).
細胞内局在	Cytoplasm. Nucleus and Cell membrane. Cytoplasm, perinuclear region. Nucleus. Translocation to the nucleus requires endocytosis, probably endosomal sorting and is mediated by importin beta-1/KPNB1.



Sample Kinase Activity Plot.

Functional Studies - ErbB 2 protein (Cytoplasmic domain) (ab60866)



ab60866 on SDS-PAGE, MW ~116 kDa.

SDS-PAGE - ErbB 2 protein (Cytoplasmic domain) (ab60866)

Please note: All products are "FOR RESEARCH USE ONLY AND ARE NOT INTENDED FOR DIAGNOSTIC OR THERAPEUTIC USE"

Our Abpromise to you: Quality guaranteed and expert technical support

- Replacement or refund for products not performing as stated on the datasheet
- Valid for 12 months from date of delivery
- Response to your inquiry within 24 hours
- We provide support in Chinese, English, French, German, Japanese and Spanish
- Extensive multi-media technical resources to help you
- We investigate all quality concerns to ensure our products perform to the highest standards

If the product does not perform as described on this datasheet, we will offer a refund or replacement. For full details of the Abpromise, please visit <http://www.abcam.co.jp/abpromise> or contact our technical team.

Terms and conditions

- Guarantee only valid for products bought direct from Abcam or one of our authorized distributors