

Product datasheet

Recombinant human CDK6 + CCND1 protein ab84559

画像数 2

製品の概要

製品名	Recombinant human CDK6 + CCND1 protein
タンパク質長	Full length protein

法規制情報

カルタヘナ法

製品の詳細

由来	Recombinant
由来	Baculovirus infected Sf9 cells
アミノ酸配列	
生物種	Human

特性

Our [Abpromise guarantee](#) covers the use of **ab84559** in the following tested applications.

The application notes include recommended starting dilutions; optimal dilutions/concentrations should be determined by the end user.

生理活性	Specific activity of CDK6 + CCND1 was determined to be 9.3 nmol/min/mg as per activity assay protocol.
アプリケーション	Western blot Functional Studies SDS-PAGE
製品の状態	Liquid
備考	ab56270 (Human Rb protein fragment) can be utilized as a substrate for assessing Kinase activity

前処理および保存

保存方法および安定性	Shipped on dry ice. Upon delivery aliquot and store at -80°C. Avoid freeze / thaw cycles.
------------	---

Preservative: 150mM Imidazole

Constituents: 25% Glycerol, 50mM Sodium phosphate, 300mM Sodium chloride, 0.2mM DTT, 0.1mM PMSF, pH 7.0

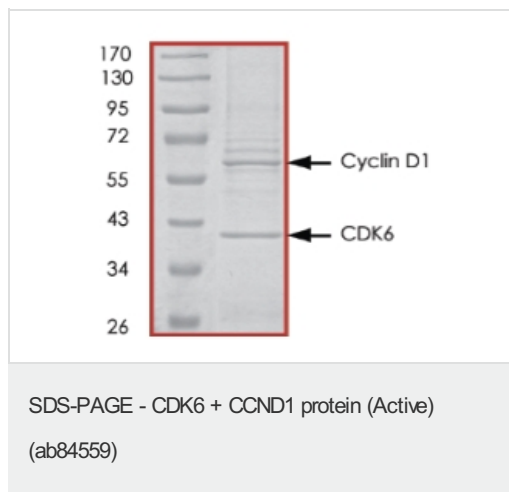
This product is an active protein and may elicit a biological response in vivo, handle with caution.

関連情報

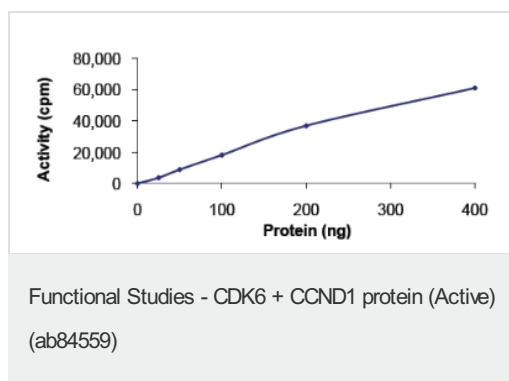
関連性

CDK6 is a member of the cyclin-dependent family of protein kinases that are important regulators of cell cycle progression. CDK6 activity is regulated by the D-type cyclins and members of the INK4 family of CDK inhibitors (1). The CDK6 kinase activity is detected in mid-G1 phase of the cell cycle and is responsible for the phosphorylation and regulation of the activity of tumor suppressor protein Rb. Although CDK6 and CDK4 can both phosphorylate multiple residues in the Rb protein, they do so with different residue selectivity in vitro; CDK6 phosphorylates Thr821 while CDK4 phosphorylates Thr826 on Rb protein (2). CCND1 is essential for the control of the cell cycle at the G1/S (start) transition

画像



Purity of CDK6 + CCND1 was determined to be >85% by densitometry. CDK6 approx. MW 40kDa and CCND1 approx. MW 61kDa.



Specific activity of CDK6 + CCND1 was determined to be 9.3 nmol/min/mg as per activity assay protocol.

Please note: All products are "FOR RESEARCH USE ONLY AND ARE NOT INTENDED FOR DIAGNOSTIC OR THERAPEUTIC USE"

Our Abpromise to you: Quality guaranteed and expert technical support

- Replacement or refund for products not performing as stated on the datasheet
- Valid for 12 months from date of delivery
- Response to your inquiry within 24 hours

- We provide support in Chinese, English, French, German, Japanese and Spanish
- Extensive multi-media technical resources to help you
- We investigate all quality concerns to ensure our products perform to the highest standards

If the product does not perform as described on this datasheet, we will offer a refund or replacement. For full details of the Abpromise, please visit <http://www.abcam.co.jp/abpromise> or contact our technical team.

Terms and conditions

- Guarantee only valid for products bought direct from Abcam or one of our authorized distributors