

Product datasheet

Recombinant Human TPA Tissue Plasminogen Activator protein ab92588

画像数 1

製品の概要

| | |
|--------|--|
| 製品名 | Recombinant Human TPA Tissue Plasminogen Activator protein |
| タンパク質長 | Full length protein |

製品の詳細

| | |
|--------|-------------|
| 由来 | Recombinant |
| 由来 | CHO cells |
| アミノ酸配列 | |
| 生物種 | Human |

特性

Our [Abpromise guarantee](#) covers the use of **ab92588** in the following tested applications.

The application notes include recommended starting dilutions; optimal dilutions/concentrations should be determined by the end user.

| | |
|----------|--|
| アプリケーション | SDS-PAGE |
| 精製度 | > 95 % SDS-PAGE. Prepared from Human TPA by incubation with an excess of ATA-Phe-Pro-Arg-CMK. After labeling at the active site, remaining free peptide is removed by dialysis. |
| 製品の状態 | Liquid |
| 備考 | Spectrophotometric Data: e0.1% =1.9 ab92588 is fully complexable with Human PAI1. |

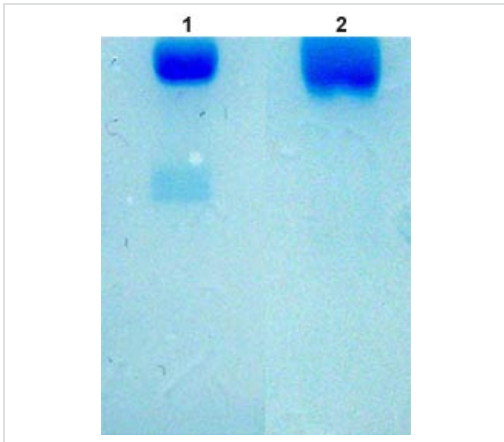
前処理および保存

| | |
|------------|---|
| 保存方法および安定性 | Shipped on dry ice. Upon delivery aliquot and store at -80°C. Avoid freeze / thaw cycles. Preservative: None Constituents: 0.4M HEPES, 0.1M Sodium chloride, pH 7.4 |
|------------|---|

関連情報

| | |
|-------|---|
| 機能 | Converts the abundant, but inactive, zymogen plasminogen to plasmin by hydrolyzing a single Arg-Val bond in plasminogen. By controlling plasmin-mediated proteolysis, it plays an important role in tissue remodeling and degradation, in cell migration and many other physiopathological events. Play a direct role in facilitating neuronal migration. |
| 組織特異性 | Synthesized in numerous tissues (including tumors) and secreted into most extracellular body fluids, such as plasma, uterine fluid, saliva, gingival crevicular fluid, tears, seminal fluid, and milk. |
| 関連疾患 | Note=Increased activity of TPA results in increased fibrinolysis of fibrin blood clots that is associated with excessive bleeding. Defective release of TPA results in hypofibrinolysis that can lead to thrombosis or embolism. |
| 配列類似性 | Belongs to the peptidase S1 family. Contains 1 EGF-like domain. Contains 1 fibronectin type-I domain. Contains 2 kringle domains. Contains 1 peptidase S1 domain. |
| ドメイン | Both FN1 and one of the kringle domains are required for binding to fibrin. Both FN1 and EGF-like domains are important for binding to LRP1. The FN1 domain mediates binding to annexin A2. The second kringle domain is implicated in binding to cytokeratin-8 and to the endothelial cell surface binding site. |
| 翻訳後修飾 | The single chain, almost fully active enzyme, can be further processed into a two-chain fully active form by a cleavage after Arg-310 catalyzed by plasmin, tissue kallikrein or factor Xa. Differential cell-specific N-linked glycosylation gives rise to two glycoforms, type I (glycosylated at Asn-219) and type II (not glycosylated at Asn-219). The single chain type I glycoform is less readily converted into the two-chain form by plasmin, and the two-chain type I glycoform has a lower activity than the two-chain type II glycoform in the presence of fibrin. N-glycosylation of Asn-152; the bound oligomannosidic glycan is involved in the interaction with the mannose receptor. Characterization of O-linked glycan was studied in Bowes melanoma cell line. |
| 細胞内局在 | Secreted > extracellular space. |

画像



SDS-PAGE analysis of ab92588

Lane 1: Reduced

Lane 2: Non-reduced

SDS-PAGE - TPA Tissue Plasminogen Activator protein (Human) (ab92588)

Please note: All products are "FOR RESEARCH USE ONLY AND ARE NOT INTENDED FOR DIAGNOSTIC OR THERAPEUTIC USE"

Our Abpromise to you: Quality guaranteed and expert technical support

- Replacement or refund for products not performing as stated on the datasheet
- Valid for 12 months from date of delivery
- Response to your inquiry within 24 hours
- We provide support in Chinese, English, French, German, Japanese and Spanish
- Extensive multi-media technical resources to help you
- We investigate all quality concerns to ensure our products perform to the highest standards

If the product does not perform as described on this datasheet, we will offer a refund or replacement. For full details of the Abpromise, please visit <http://www.abcam.co.jp/abpromise> or contact our technical team.

Terms and conditions

- Guarantee only valid for products bought direct from Abcam or one of our authorized distributors