

## Product datasheet

# Recombinant Human TCEB1 protein ab114949

### 画像数 1

#### 製品の概要

---

製品名	Recombinant Human TCEB1 protein
タンパク質長	Full length protein

#### 製品の詳細

---

由来	Recombinant
由来	Wheat germ
アミノ酸配列	
アクセッション番号	<a href="#">Q15369</a>
生物種	Human
配列	MDGEEKTYGGCEGPDAMYVKLISSDGHEFIVKREHALTSGTIKAMLSGPG QFAENETNEVNFREIPSHVLSKVCMYFTYKVRTNSSTEIPEFPIAPEIA LELLMAANFLDC
分子量	38 kDa including tags
領域	1 to 112

#### 特性

---

Our [Abpromise guarantee](#) covers the use of **ab114949** in the following tested applications.

The application notes include recommended starting dilutions; optimal dilutions/concentrations should be determined by the end user.

アプリケーション	ELISA Western blot SDS-PAGE
製品の状態	Liquid
備考	Protein concentration is above or equal to 0.05 mg/ml. Best used within three months from the date of receipt.

#### 前処理および保存

---

保存方法および安定性	Shipped on dry ice. Upon delivery aliquot and store at -80°C. Avoid freeze / thaw cycles.
------------	---

pH: 8.00

Constituents: 0.3% Glutathione, 0.79% Tris HCl

## 関連情報

### 機能

SIII, also known as elongin, is a general transcription elongation factor that increases the RNA polymerase II transcription elongation past template-encoded arresting sites. Subunit A is transcriptionally active and its transcription activity is strongly enhanced by binding to the dimeric complex of the SIII regulatory subunits B and C (elongin BC complex).

The elongin BC complex seems to be involved as an adapter protein in the proteasomal degradation of target proteins via different E3 ubiquitin ligase complexes, including the von Hippel-Lindau ubiquitination complex CBC(VHL). By binding to BC-box motifs it seems to link target recruitment subunits, like VHL and members of the SOCS box family, to Cullin/RBX1 modules that activate E2 ubiquitination enzymes.

### 組織特異性

Overexpressed in prostate cancer cell line PC-3 and breast cancer cell line SK-BR-3.

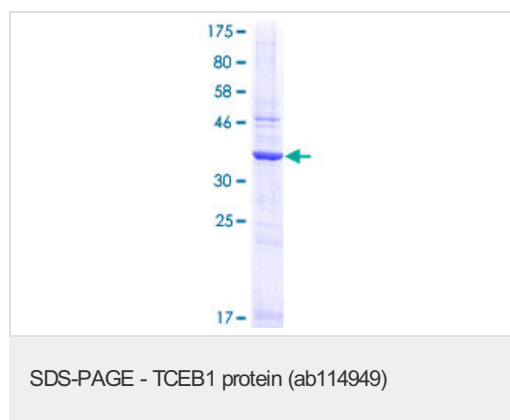
### 配列類似性

Belongs to the SKP1 family.

### 細胞内局在

Nucleus.

## 画像



12.5% SDS-PAGE showing ab114949 at approximately 38.06kDa.

Stained with Coomassie Blue.

**Please note:** All products are "FOR RESEARCH USE ONLY AND ARE NOT INTENDED FOR DIAGNOSTIC OR THERAPEUTIC USE"

## Our Abpromise to you: Quality guaranteed and expert technical support

- Replacement or refund for products not performing as stated on the datasheet
- Valid for 12 months from date of delivery
- Response to your inquiry within 24 hours
- We provide support in Chinese, English, French, German, Japanese and Spanish
- Extensive multi-media technical resources to help you
- We investigate all quality concerns to ensure our products perform to the highest standards

If the product does not perform as described on this datasheet, we will offer a refund or replacement. For full details of the Abpromise, please visit <http://www.abcam.co.jp/abpromise> or contact our technical team.

## Terms and conditions

---

- Guarantee only valid for products bought direct from Abcam or one of our authorized distributors