

Product datasheet

Recombinant Human Shwachman Bodian-Diamond syndrome protein ab99957

画像数 1

製品の概要

製品名	Recombinant Human Shwachman Bodian-Diamond syndrome protein
タンパク質長	Full length protein

製品の詳細

由来	Recombinant
由来	Escherichia coli

アミノ酸配列

アクセッション番号 [Q9Y3A5](#)

生物種 Human

配列 **MGSSHHHHHSSGLVPRGSHMSIFTPTNQIRLTNVAVVRMKRAGRFEIA
CYKNKVVGWRSVGEKDLDEVLQTHSVFVNVSKGQVAKKEDLISAFGTDDQ
TEICKQILTKGEVQVSDKERHTQLEQMFRDIATIVADKCVNPETKRPYTV
ILIERAMKDIHYSVKNKSTKQQALEVIKQLKEKMKIERAHMRLRFILPV
NEGKKLKEKLPKLIKVIESEDYGQLEIVCLIDPGCFREIDELIKKETKG
KGSLEVLNLKDVEEGDEKFE**

分子量 31 kDa including tags

領域 1 to 250

タグ His tag N-Terminus

特性

Our [Abpromise guarantee](#) covers the use of **ab99957** in the following tested applications.

The application notes include recommended starting dilutions; optimal dilutions/concentrations should be determined by the end user.

アプリケーション	SDS-PAGE Mass Spectrometry
質量分析	MALDI-TOF
精製度	> 95 % SDS-PAGE. ab99957 is purified using conventional chromatography techniques.

製品の状態

Liquid

前処理および保存

保存方法および安定性

Shipped at 4°C. Upon delivery aliquot and store at -20°C or -80°C. Avoid repeated freeze / thaw cycles.

Preservative: None

Constituents: 20% Glycerol, 50mM Sodium chloride, 20mM Tris HCl, 2mM DTT, 0.1mM EDTA, pH 8.0

関連情報

機能

Required for the assembly of mature ribosomes and ribosome biogenesis. Together with EFTUD1, triggers the GTP-dependent release of EIF6 from 60S pre-ribosomes in the cytoplasm, thereby activating ribosomes for translation competence by allowing 80S ribosome assembly and facilitating EIF6 recycling to the nucleus, where it is required for 60S rRNA processing and nuclear export. Required for normal levels of protein synthesis. May play a role in cellular stress resistance. May play a role in cellular response to DNA damage. May play a role in cell proliferation.

組織特異性

Widely expressed.

関連疾患

Defects in SBDS are the cause of Shwachman-Diamond syndrome (SDS) [MIM:260400]. SDS is an autosomal recessive disorder characterized by pancreatic exocrine insufficiency, hematologic dysfunction, and skeletal abnormalities.

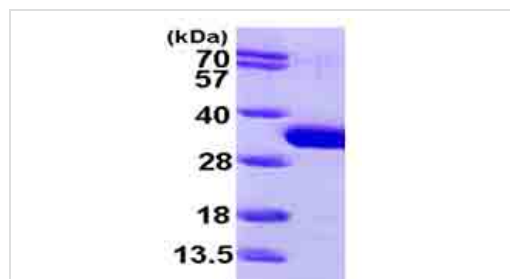
配列類似性

Belongs to the SDO1/SBDS family.

細胞内局在

Cytoplasm. Nucleus > nucleolus. Nucleus > nucleoplasm. Cytoplasm > cytoskeleton > spindle. Primarily detected in the cytoplasm, and at low levels in nucleus and nucleolus (PubMed:19602484 and PubMed:17475909). Detected in the nucleolus during G1 and G2 phase of the cell cycle, and diffusely distributed in the nucleus during S phase. Detected at the mitotic spindle. Colocalizes with the microtubule organizing center during interphase.

画像



15% SDS-PAGE showing ab99957 (3µg).

SDS-PAGE - Shwachman Bodian-Diamond syndrome protein (ab99957)

Please note: All products are "FOR RESEARCH USE ONLY AND ARE NOT INTENDED FOR DIAGNOSTIC OR THERAPEUTIC USE"

Our Abpromise to you: Quality guaranteed and expert technical support

- Replacement or refund for products not performing as stated on the datasheet
- Valid for 12 months from date of delivery
- Response to your inquiry within 24 hours

- We provide support in Chinese, English, French, German, Japanese and Spanish
- Extensive multi-media technical resources to help you
- We investigate all quality concerns to ensure our products perform to the highest standards

If the product does not perform as described on this datasheet, we will offer a refund or replacement. For full details of the Abpromise, please visit <http://www.abcam.co.jp/abpromise> or contact our technical team.

Terms and conditions

- Guarantee only valid for products bought direct from Abcam or one of our authorized distributors