

Product datasheet

Recombinant Human SPSB1 protein ab107155

画像数 1

製品の概要

製品名	Recombinant Human SPSB1 protein
タンパク質長	Protein fragment

製品の詳細

由来	Recombinant
由来	Escherichia coli

アミノ酸配列

アクセッション番号	Q96BD6
生物種	Human
配列	MGSSHHHHHSSGLVPRGSHMQELQGLDYCKPTRLDLLLDMPVSYDVQL LHSWNNDRSLNVFKEDDKLIFHRHPVAQSTDAIRGKVG YTRGLHVWQI TWAMRQRGTHAVVGVATADAPLHSVGYTTLVGNNHESWGWDLGRNRLYHD GKNQPSKTYPAFLEPDETFIVPDSFLVALDMDGTL SFIVDGGQYMGVAFR GLKGKKLYPVVSAVWGHCEIRMRYLNGLDPE

分子量	26 kDa
領域	24 to 233
タグ	His tag N-Terminus

特性

Our [Abpromise guarantee](#) covers the use of **ab107155** in the following tested applications.

The application notes include recommended starting dilutions; optimal dilutions/concentrations should be determined by the end user.

アプリケーション	SDS-PAGE Mass Spectrometry
質量分析	MALDI-TOF
精製度	> 90 % SDS-PAGE. ab107155 is purified using conventional chromatography techniques.
製品の状態	Liquid

保存方法および安定性

Shipped at 4°C. Store at +4°C short term (1-2 weeks). Upon delivery aliquot. Store at -20°C or -80°C. Avoid freeze / thaw cycle.

Preservative: None

Constituents: 30% Glycerol, 0.1M Sodium chloride, 20mM Tris HCl, 1mM DTT, pH 8.0

関連情報

機能

Probable substrate recognition component of a SCF-like ECS (Elongin BC-CUL2/5-SOCS-box protein) E3 ubiquitin-protein ligase complex which mediates the ubiquitination and subsequent proteasomal degradation of target proteins.

パスウェイ

Protein modification; protein ubiquitination.

配列類似性

Belongs to the SPSB family.

Contains 1 B30.2/SPRY domain.

Contains 1 SOCS box domain.

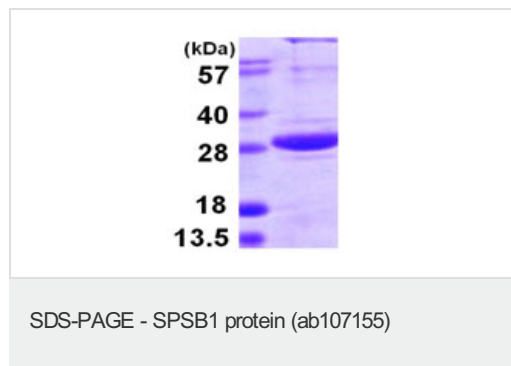
ドメイン

The SOCS box domain mediates the interaction with the Elongin BC complex, an adapter module in different E3 ubiquitin ligase complexes (By similarity). The B30.2/SPRY domain is involved in MET binding.

細胞内局在

Cytoplasm.

画像



15% SDS-PAGE showing ab107155 (3μg).

Please note: All products are "FOR RESEARCH USE ONLY AND ARE NOT INTENDED FOR DIAGNOSTIC OR THERAPEUTIC USE"

Our Abpromise to you: Quality guaranteed and expert technical support

- Replacement or refund for products not performing as stated on the datasheet
- Valid for 12 months from date of delivery
- Response to your inquiry within 24 hours
- We provide support in Chinese, English, French, German, Japanese and Spanish
- Extensive multi-media technical resources to help you
- We investigate all quality concerns to ensure our products perform to the highest standards

If the product does not perform as described on this datasheet, we will offer a refund or replacement. For full details of the Abpromise,

please visit <http://www.abcam.co.jp/abpromise> or contact our technical team.

Terms and conditions

- Guarantee only valid for products bought direct from Abcam or one of our authorized distributors