

## Product datasheet

# Recombinant Human SP100 protein ab114587

### 画像数 1

#### 製品の概要

製品名	Recombinant Human SP100 protein
タンパク質長	Full length protein

#### 製品の詳細

由来	Recombinant
由来	Wheat germ

#### アミノ酸配列

アクセッション番号 [P23497](#)

生物種 Human

配列  
 MAGGGGDLSTRRLNECISPVANEMNHLPAHSHDLQRMFTEDQGVDRLLY  
 DIVFKHFKRNKVEISNAIKKTFPFLEGLRDRDLITNKMFEDESQDSCRNLV  
 PVQRVVYNVLSLEKTFNLPVLEALFSDVNMQEYPDLIHIYKGFENVIHD  
 KLPLQESEEEEEERSGLQLSLEQGTGENSFRSLTWPPSGSPSHAGTTPP  
 ENGLSEHPCETEQINAKRKDTTSDKDDSLGSQQTNEQCAQKAEPTECEQ  
 IAVQVNNGDAGREMPCLPCDEESPEAELHNHGIQINSCSVRLVDIKKEK  
 PFSNSKVECQAQARTHNNQASDIIVISSEDESEGSTDVDEPLEVFISAPRS  
 EPVINNDNPLESNDEKEGQEATCSRQIVPEPMDFRKLSTFRESFKKRVI  
 GQDHDFSESSEEEAPAEASSGALRSKHGKAPMTRSTSTWRIPSRKRRF  
 SSSDFSDLSNGEELQETCSSSLRRGSGKED

分子量 79 kDa including tags

領域 1 to 480

#### 特性

Our [Abpromise guarantee](#) covers the use of **ab114587** in the following tested applications.

The application notes include recommended starting dilutions; optimal dilutions/concentrations should be determined by the end user.

アプリケーション	ELISA
	SDS-PAGE
	Western blot

製品の状態 Liquid

**備考** Protein concentration is above or equal to 0.05 µg/ul. Best use within three months from the date of receipt of this protein.

## 前処理および保存

**保存方法および安定性** Shipped on dry ice. Upon delivery aliquot and store at -80°C. Avoid freeze / thaw cycles.  
pH: 8.00  
Constituents: 0.3% Glutathione, 0.79% Tris HCl

## 関連情報

**機能** May play a role in the control of gene expression.

**組織特異性** Widely expressed. Sp100-B is expressed only in spleen, tonsil, thymus, mature B-cell line and some T-cell line, but not in brain, liver, muscle or non-lymphoid cell lines.

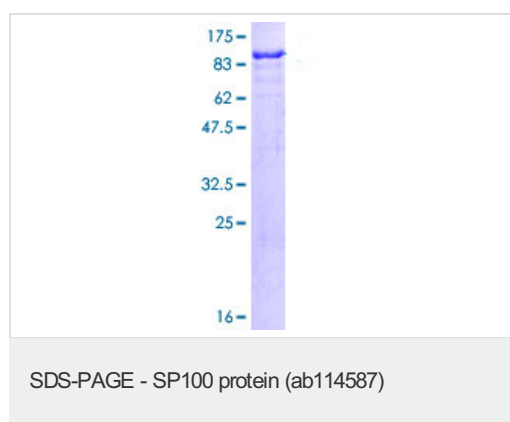
**配列類似性** Contains 2 HMG box DNA-binding domains.  
Contains 1 HSR domain.  
Contains 1 SAND domain.

**ドメイン** The HSR domain is important for the nuclear body targeting as well as for the dimerization. Contains one Pro-Xaa-Val-Xaa-Leu (PxVxL) motif, which is required for interaction with chromoshadow domains. This motif requires additional residues -7, -6, +4 and +5 of the central Val which contact the chromoshadow domain.

**翻訳後修飾** Sumoylated. Sumoylation depends on a functional nuclear localization signal but is not necessary for nuclear import or nuclear body targeting.

**細胞内局在** Nucleus > PML body. Found in the nuclear body, also known as nuclear domain 10 (ND10), PML oncogenic domain (POD), nuclear dots (ND) and KR body. The nuclear body is a nucleoplasmic structure of punctate shape, which varies in size and number. Induction by interferon and may be cell cycle stages modulate the subnuclear localization of the isoforms.

## 画像



12.5% SDS-PAGE showing ab114587 at approximately 78.87kDa stained with Coomassie Blue.

**Please note:** All products are "FOR RESEARCH USE ONLY AND ARE NOT INTENDED FOR DIAGNOSTIC OR THERAPEUTIC USE"

- Replacement or refund for products not performing as stated on the datasheet
- Valid for 12 months from date of delivery
- Response to your inquiry within 24 hours
  
- We provide support in Chinese, English, French, German, Japanese and Spanish
- Extensive multi-media technical resources to help you
- We investigate all quality concerns to ensure our products perform to the highest standards

If the product does not perform as described on this datasheet, we will offer a refund or replacement. For full details of the Abpromise, please visit <http://www.abcam.co.jp/abpromise> or contact our technical team.

## **Terms and conditions**

---

- Guarantee only valid for products bought direct from Abcam or one of our authorized distributors