

Product datasheet

Recombinant Human Robo1 protein ab114299

画像数 1

製品の概要

製品名	Recombinant Human Robo1 protein
タンパク質長	Protein fragment

製品の詳細

由来	Recombinant
由来	Wheat germ
アミノ酸配列	
アクセッション番号	<a href="#">Q9Y6N7</a>
生物種	Human
配列	DGVLVSTQDSRIKQLENGVLQIRYAKLGDTGRYTCTIASTPSGEATWSAYI EVQEFQVQPPRPTDNLIPSAPSKPEVTDVSRNTVTLWQPNLNSGA
分子量	37 kDa including tags
領域	491 to 589

特性

Our [Abpromise guarantee](#) covers the use of **ab114299** in the following tested applications.

The application notes include recommended starting dilutions; optimal dilutions/concentrations should be determined by the end user.

アプリケーション	Western blot ELISA SDS-PAGE
製品の状態	Liquid
備考	Protein concentration is above or equal to 0.05 mg/ml. This protein is best used within three months from the date of receipt.

前処理および保存

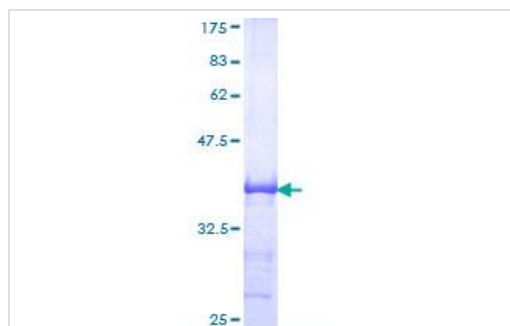
保存方法および安定性	Shipped on dry ice. Upon delivery aliquot and store at -80°C. Avoid freeze / thaw cycles. pH: 8.00
------------	---

Constituents: 0.3% Glutathione, 0.79% Tris HCl

## 関連情報

機能	Receptor for SLIT1 and SLIT2 which are thought to act as molecular guidance cue in cellular migration, including axonal navigation at the ventral midline of the neural tube and projection of axons to different regions during neuronal development. In axon growth cones, the silencing of the attractive effect of NTN1 by SLIT2 may require the formation of a ROBO1-DCC complex. May be required for lung development.
組織特異性	Widely expressed, with exception of kidney.
配列類似性	Belongs to the immunoglobulin superfamily. ROBO family. Contains 3 fibronectin type-III domains. Contains 5 Ig-like C2-type (immunoglobulin-like) domains.
翻訳後修飾	Ubiquitinated. May be deubiquitinated by USP33.
細胞内局在	Membrane.

## 画像



12.5% SDS-PAGE image showing ab114299  
Stained with Coomassie Blue.

SDS-PAGE - Robo1 protein (Tagged) (ab114299)

**Please note:** All products are "FOR RESEARCH USE ONLY AND ARE NOT INTENDED FOR DIAGNOSTIC OR THERAPEUTIC USE"

## Our Abpromise to you: Quality guaranteed and expert technical support

- Replacement or refund for products not performing as stated on the datasheet
- Valid for 12 months from date of delivery
- Response to your inquiry within 24 hours
- We provide support in Chinese, English, French, German, Japanese and Spanish
- Extensive multi-media technical resources to help you
- We investigate all quality concerns to ensure our products perform to the highest standards

If the product does not perform as described on this datasheet, we will offer a refund or replacement. For full details of the Abpromise, please visit <http://www.abcam.co.jp/abpromise> or contact our technical team.

## Terms and conditions

---

- Guarantee only valid for products bought direct from Abcam or one of our authorized distributors