

Product datasheet

Recombinant Human Prosurfactant Protein C ab114293

画像数 1

製品の概要

製品名	Recombinant Human Prosurfactant Protein C
タンパク質長	Full length protein

製品の詳細

由来	Recombinant
由来	Wheat germ

アミノ酸配列

アクセッション番号 [P11686](#)

生物種 Human

配列 MDVGSKEVLMESPPDYSAAPRGRFGIPRCPVHLKRLLIVVVVVVLIVVVI
 VGALLMGLHMSQKHTEMVLEMSIGAPEAQRLALSEHLVTTATFSIGSTG
 LVVYDYQLLIAYKPAPGTCCYIMKIAPESIPSLEALNRKVHNFQMECSL
 QAKPAVPTSKLGQAEGRDAGSAPSGGDPAFLGMAVNTLCGEVPLYYI

分子量 47 kDa including tags

領域 1 to 197

特性

Our [Abpromise guarantee](#) covers the use of **ab114293** in the following tested applications.

The application notes include recommended starting dilutions; optimal dilutions/concentrations should be determined by the end user.

アプリケーション	Western blot
	ELISA
	SDS-PAGE

製品の状態 Liquid

備考 Protein concentration is above or equal to 0.05 mg/ml.
 Best used within three months from the date of receipt.

前処理および保存

保存方法および安定性 Shipped on dry ice. Upon delivery aliquot and store at -80°C. Avoid freeze / thaw cycles.

pH: 8.00

Constituents: 0.3% Glutathione, 0.79% Tris HCl

関連情報

機能

Pulmonary surfactant associated proteins promote alveolar stability by lowering the surface tension at the air-liquid interface in the peripheral air spaces.

関連疾患

Defects in SFTPC are the cause of pulmonary surfactant metabolism dysfunction type 2 (SMDP2) [MIM:610913]; also called pulmonary alveolar proteinosis due to surfactant protein C deficiency. A rare disease associated with progressive respiratory insufficiency and lung disease with a variable clinical course, due to impaired surfactant homeostasis. It is characterized by alveolar filling with floccular material that stains positive using the periodic acid-Schiff method and is derived from surfactant phospholipids and protein components. Excessive lipoproteins accumulation in the alveoli results in severe respiratory distress.

Genetic variations in SFTPC are a cause of susceptibility to respiratory distress syndrome in premature infants (RDS) [MIM:267450]; also known as RDS in prematurity. RDS is a lung disease affecting usually premature newborn infants. It is characterized by deficient gas exchange, diffuse atelectasis, high-permeability lung edema and fibrin-rich alveolar deposits called 'hyaline membranes'.

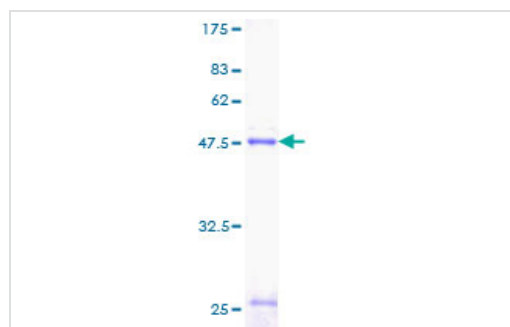
配列類似性

Contains 1 BRICHOS domain.

細胞内局在

Secreted > extracellular space > surface film.

画像



SDS-PAGE - SFTPC protein (ab114293)

ab114293 analysed on a 12.5% SDS-PAGE gel stained with Coomassie Blue.

Please note: All products are "FOR RESEARCH USE ONLY AND ARE NOT INTENDED FOR DIAGNOSTIC OR THERAPEUTIC USE"

Our Abpromise to you: Quality guaranteed and expert technical support

- Replacement or refund for products not performing as stated on the datasheet
- Valid for 12 months from date of delivery
- Response to your inquiry within 24 hours
- We provide support in Chinese, English, French, German, Japanese and Spanish
- Extensive multi-media technical resources to help you

- We investigate all quality concerns to ensure our products perform to the highest standards

If the product does not perform as described on this datasheet, we will offer a refund or replacement. For full details of the Abpromise, please visit <http://www.abcam.co.jp/abpromise> or contact our technical team.

Terms and conditions

- Guarantee only valid for products bought direct from Abcam or one of our authorized distributors