

Product datasheet

Recombinant Human Prostate Secretory Protein/PSP ab114477

画像数 1

製品の概要

製品名	Recombinant Human Prostate Secretory Protein/PSP
タンパク質長	Full length protein

製品の詳細

由来	Recombinant
由来	Wheat germ
アミノ酸配列	
アクセッション番号	<a href="#">P08118</a>
生物種	Human
配列	MNVLGGSVIVFATFVTLNCNASCYFIPNEGVPDSTRKCMDLKGNKHPINS EWQTDNCETCTCYETEISCCTLVSTPVGYDKDNCQRIFKKEDCKYIVVEK KDPKKTCSVSEWII
分子量	39 kDa including tags
領域	1 to 114

特性

Our [Abpromise guarantee](#) covers the use of **ab114477** in the following tested applications.

The application notes include recommended starting dilutions; optimal dilutions/concentrations should be determined by the end user.

アプリケーション	ELISA SDS-PAGE Western blot
製品の状態	Liquid
備考	Protein concentration is above or equal to 0.05 mg/ml. Best used within three months from the date of receipt.

前処理および保存

保存方法および安定性	Shipped on dry ice. Upon delivery aliquot and store at -80°C. Avoid freeze / thaw cycles.
------------	---

pH: 8.00

Constituents: 0.3% Glutathione, 0.79% Tris HCl

## 関連情報

### 組織特異性

Strongly expressed in prostate, liver, kidney, breast and penis. Also expressed in pancreas, esophagus, stomach, deodenum, colon, trachea, lung, salivary glands and fallopian tube. PSP94 is expressed in lung and breast, whereas PSP57 is found in kidney and bladder.

### 関連疾患

Defects in MSMB are the cause of susceptibility to prostate cancer hereditary type 13 (HPC13) [MIM:611928]. It is a condition associated with familial predisposition to cancer of the prostate. Most prostate cancers are adenocarcinomas that develop in the acini of the prostatic ducts. Other rare histopathologic types of prostate cancer that occur in approximately 5% of patients include small cell carcinoma, mucinous carcinoma, prostatic ductal carcinoma, transitional cell carcinoma, squamous cell carcinoma, basal cell carcinoma, adenoid cystic carcinoma (basaloid), signet-ring cell carcinoma and neuroendocrine carcinoma.

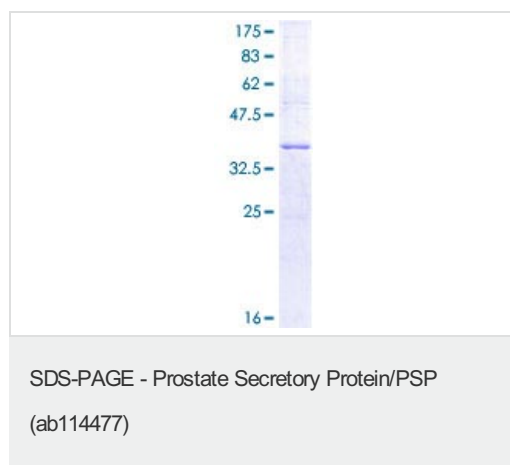
### 配列類似性

Belongs to the beta-microseminoprotein family.

### 細胞内局在

Secreted. Sperm surface.

## 画像



12.5% SDS-PAGE showing ab114477 at approximately 38.65kDa stained with Coomassie Blue.

**Please note:** All products are "FOR RESEARCH USE ONLY AND ARE NOT INTENDED FOR DIAGNOSTIC OR THERAPEUTIC USE"

## Our Abpromise to you: Quality guaranteed and expert technical support

- Replacement or refund for products not performing as stated on the datasheet
- Valid for 12 months from date of delivery
- Response to your inquiry within 24 hours
- We provide support in Chinese, English, French, German, Japanese and Spanish
- Extensive multi-media technical resources to help you
- We investigate all quality concerns to ensure our products perform to the highest standards

If the product does not perform as described on this datasheet, we will offer a refund or replacement. For full details of the Abpromise,

please visit <http://www.abcam.co.jp/abpromise> or contact our technical team.

## **Terms and conditions**

---

- Guarantee only valid for products bought direct from Abcam or one of our authorized distributors