

Product datasheet

Recombinant Human Prostaglandin D Synthase (Lipocalin) protein ab63850

画像数 1

製品の概要

製品名	Recombinant Human Prostaglandin D Synthase (Lipocalin) protein
タンパク質長	Full length protein

製品の詳細

由来	Recombinant
由来	Escherichia coli

アミノ酸配列

生物種	Human
配列	MRGSHHHHHH GMASAPEAQV SVQPNFQQDK FLGRWFSAGL ASNSSWLREK KAALSMCKSV VAPATDGGLN LTSTFLRKNQ CETRTMLLQP AGSLGYSYSR SPHWGSTYSV SVVETDYDQY ALLYSQGSKG PGEDFRMATL YSRTQTPRAE LKEKFTAFCK AQGFTEDTIV FLPQTDKCMT EQ
領域	23 to 190

特性

Our [Abpromise guarantee](#) covers the use of **ab63850** in the following tested applications.

The application notes include recommended starting dilutions; optimal dilutions/concentrations should be determined by the end user.

アプリケーション	Western blot SDS-PAGE
精製度	> 95 % SDS-PAGE. Please filter the product by an appropriate sterile filter before using it in the cell culture.
製品の状態	Lyophilised

前処理および保存

保存方法および安定性	Shipped at 4°C. Upon delivery aliquot and store at -20°C. Avoid freeze / thaw cycles.
------------	---

Preservative: None

Constituents: 20mM Sodium chloride, 20mM Tris buffer, pH 7.5

再構成 Add deionized water to prepare a working stock solution of approximately 0.5 mg/ml and let the lyophilized pellet dissolve completely. Product is not sterile! Please filter the product by an appropriate sterile filter before using it in the cell culture.

関連情報

機能 Catalyzes the conversion of PGH2 to PGD2, a prostaglandin involved in smooth muscle contraction/relaxation and a potent inhibitor of platelet aggregation. Involved in a variety of CNS functions, such as sedation, NREM sleep and PGE2-induced allodynia, and may have an anti-apoptotic role in oligodendrocytes. Binds small non-substrate lipophilic molecules, including biliverdin, bilirubin, retinal, retinoic acid and thyroid hormone, and may act as a scavenger for harmful hydrophobic molecules and as a secretory retinoid and thyroid hormone transporter. Possibly involved in development and maintenance of the blood-brain, blood-retina, blood-aqueous humor and blood-testis barrier. It is likely to play important roles in both maturation and maintenance of the central nervous system and male reproductive system.

組織特異性 Abundant in the brain and CNS, where it is expressed in tissues of the blood-brain barrier and secreted into the cerebro-spinal fluid. Abundantly expressed in the heart. In the male reproductive system, it is expressed in the testis, epididymis and prostate, and is secreted into the seminal fluid. Expressed in the eye and secreted into the aqueous humor. Lower levels detected in various tissue fluids such as serum, normal urine, ascitic fluid and tear fluid. Also found in a number of other organs including ovary, fimbriae of the fallopian tubes, kidney, leukocytes.

配列類似性 Belongs to the calycin superfamily. Lipocalin family.

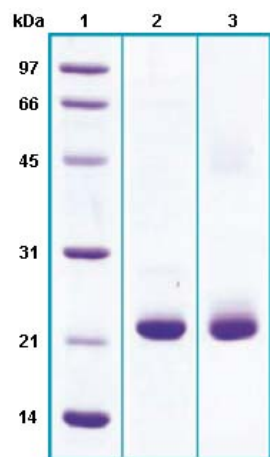
発生段階 Expression in the amniotic fluid increases dramatically during weeks 12 to 25 of pregnancy. Levels decrease slowly after 25 weeks.

ドメイン Forms a beta-barrel structure that accommodates hydrophobic ligands in its interior.

翻訳後修飾 Both N-glycosylation recognition sites are almost quantitatively occupied by N-glycans of the biantennary complex type, with a considerable proportion of structures bearing a bisecting GlcNAc. Agalactose structure as well as sialylated and nonsialylated oligosaccharides bearing alpha2-3- and/or alpha2-6-linked NeuNAc are present.

細胞内局在 Rough endoplasmic reticulum. Nucleus membrane. Golgi apparatus. Cytoplasm > perinuclear region. Secreted. Detected on rough endoplasmic reticulum of arachnoid and meningioma cells. Localized to the nuclear envelope, Golgi apparatus, secretory vesicles and spherical cytoplasmic structures in arachnoid trabecular cells, and to circular cytoplasmic structures in meningeal macrophages and perivascular microglial cells. In oligodendrocytes, localized to the rough endoplasmic reticulum and nuclear envelope. In retinal pigment epithelial cells, localized to distinct cytoplasmic domains including the perinuclear region. Also secreted.

画像



12% SDS-PAGE separation of ab63850.

Molecular Weight: ~20.3 kDa.

Lane 1. Molecular weight marker

Lane 2. reduced and heated sample, 5µg/lane

Lane 3. non-reduced and non-heated sample,
5µg/lane

SDS-PAGE - Prostaglandin D Synthase (Lipocalin)
protein (His tag) (ab63850)

Please note: All products are "FOR RESEARCH USE ONLY AND ARE NOT INTENDED FOR DIAGNOSTIC OR THERAPEUTIC USE"

Our Abpromise to you: Quality guaranteed and expert technical support

- Replacement or refund for products not performing as stated on the datasheet
- Valid for 12 months from date of delivery
- Response to your inquiry within 24 hours
- We provide support in Chinese, English, French, German, Japanese and Spanish
- Extensive multi-media technical resources to help you
- We investigate all quality concerns to ensure our products perform to the highest standards

If the product does not perform as described on this datasheet, we will offer a refund or replacement. For full details of the Abpromise, please visit <http://www.abcam.co.jp/abpromise> or contact our technical team.

Terms and conditions

- Guarantee only valid for products bought direct from Abcam or one of our authorized distributors