

Product datasheet

Recombinant Human PLGF protein ab84148

画像数 2

製品の概要

製品名	Recombinant Human PLGF protein
タンパク質長	Full length protein

製品の詳細

由来	Recombinant
由来	HEK 293 cells
アミノ酸配列	
生物種	Human
配列	Theoretical Sequence: LPAVPPQQWALSAGNGSSEVEVVPFQEVWGRSYCRALER LVDVVSEYP SEVEHMFSPSCVSLLRCTGCCGDENLHCVPVETANVTMQ LLKIRSGDR PSYVELTFSQHVRCECRPLREKMKPERCGDAVPRR

特性

Our [Abpromise guarantee](#) covers the use of **ab84148** in the following tested applications.

The application notes include recommended starting dilutions; optimal dilutions/concentrations should be determined by the end user.

アプリケーション	SDS-PAGE
精製度	> 95 % SDS-PAGE.
製品の状態	Lyophilised

前処理および保存

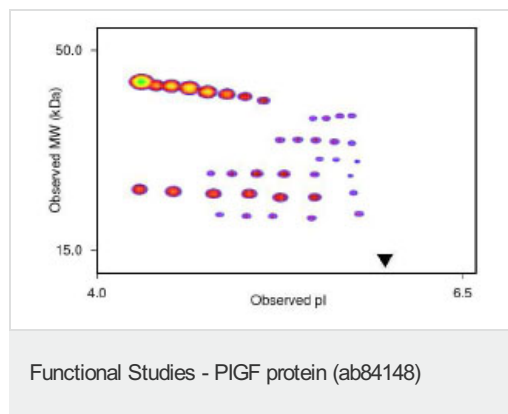
保存方法および安定性	Shipped at 4°C. After reconstitution store at -20°C. Avoid freeze / thaw cycles. Preservative: None Constituents: 10% Trehalose, 1% Human serum albumin
再構成	It is recommended that 0.5 ml of sterile phosphate-buffered saline be added to the vial.

Following reconstitution short-term storage at 4°C is recommended, with longer-term storage in aliquots at -18 to -20°C. Repeated freeze thawing is not recommended.

関連情報

機能	Growth factor active in angiogenesis and endothelial cell growth, stimulating their proliferation and migration. It binds to the receptor FLT1/VEGFR-1. Isoform PIGF-2 binds NRP1/neuropilin-1 and NRP2/neuropilin-2 in a heparin-dependent manner.
組織特異性	While the three isoforms are present in most placental tissues, PIGF-2 is specific to early (8 week) placenta and only PIGF-1 is found in the colon and mammary carcinomas.
配列類似性	Belongs to the PDGF/VEGF growth factor family.
ドメイン	Isoform PIGF-2 contains a basic insert which acts as a cell retention signal.
翻訳後修飾	N-glycosylated.
細胞内局在	Secreted. The three isoforms are secreted but PIGF-2 appears to remain cell attached unless released by heparin.

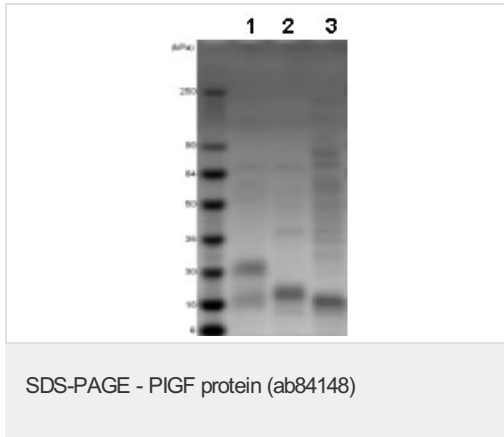
画像



Densitometry of protein isoforms visualised by 2-DE.

The densitometry scan demonstrates the purified human cell expressed protein exists in multiple isoforms, which differ according to their level of post-translational modification.

The triangle indicates the theoretical MW and pI of the protein.



1D SDS-PAGE of ab84148 before and after treatment with glycosidases to remove oligosaccharides.

Lane 1: ab84148

Lane 2: ab84148 treated with PNGase F to remove potential N-linked glycans

Lane 3: ab84148 treated with a glycosidase cocktail to remove potential N- and O-linked glycans.

10µg protein loaded per lane; Deep Purple™ stained.

Drop in MW after treatment with PNGase F indicates presence of N-linked glycans. A further drop in MW after treatment with the glycosidase cocktail indicates the presence of O-linked glycans. Additional bands in lane 2 and lane 3 are glycosidase enzymes.

Please note: All products are "FOR RESEARCH USE ONLY AND ARE NOT INTENDED FOR DIAGNOSTIC OR THERAPEUTIC USE"

Our Abpromise to you: Quality guaranteed and expert technical support

- Replacement or refund for products not performing as stated on the datasheet
- Valid for 12 months from date of delivery
- Response to your inquiry within 24 hours
- We provide support in Chinese, English, French, German, Japanese and Spanish
- Extensive multi-media technical resources to help you
- We investigate all quality concerns to ensure our products perform to the highest standards

If the product does not perform as described on this datasheet, we will offer a refund or replacement. For full details of the Abpromise, please visit <http://www.abcam.co.jp/abpromise> or contact our technical team.

Terms and conditions

- Guarantee only valid for products bought direct from Abcam or one of our authorized distributors