

Product datasheet

Recombinant Human PLA2G1B protein ab63842

画像数 1

製品の概要

| | |
|--------|-----------------------------------|
| 製品名 | Recombinant Human PLA2G1B protein |
| タンパク質長 | Protein fragment |

製品の詳細

| | |
|----|------------------|
| 由来 | Recombinant |
| 由来 | Escherichia coli |

アミノ酸配列

アクセッション番号 [P04054](#)

生物種 Human

配列 MRGSHHHHHH GMASHMAVWQ FRKMIKCVIP
GSDPFLEYNN YGCYCGLGGS GTPVDELDKC
CQTHDNCYDQ AKKLDSCCKFL LDNPYHTHTYS
YSCSGSAITC SSKNKECEAF ICNCDRNAAI
CFSKAPYNKA HKNLDTKKYC QS

領域 23 to 148

タグ His tag N-Terminus

配列の追加情報 Total 142 AA. MW: 16 kDa (calculated). N-Terminal His-tag, 16 extra AA

特性

Our [Abpromise guarantee](#) covers the use of **ab63842** in the following tested applications.

The application notes include recommended starting dilutions; optimal dilutions/concentrations should be determined by the end user.

| | |
|----------|------------------|
| アプリケーション | Western blot |
| 精製度 | > 95 % SDS-PAGE. |

製品の状態 Lyophilised

備考 Product is NOT sterile! Please filter the product by an appropriate sterile filter before using it in cell culture.

前処理および保存

保存方法および安定性

Shipped at 4°C. Upon delivery aliquot. Store at -80°C. Avoid freeze / thaw cycle.

Preservative: None

0.05M Acetate buffer pH 4.0

再構成

Add 0.1M Acetate buffer pH4 to prepare a working stock solution of approximately 0.5 mg/ml and let the lyophilized pellet dissolve completely. For conversion into higher pH value, we recommend intensive dilution by relevant buffer to a concentration of 10µg/ml. In higher concentrations the solubility of this antigen is limited.

関連情報

機能

PA2 catalyzes the calcium-dependent hydrolysis of the 2-acyl groups in 3-sn-phosphoglycerides.

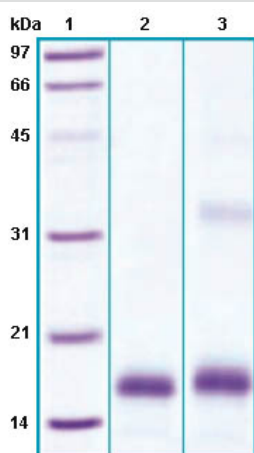
配列類似性

Belongs to the phospholipase A2 family.

細胞内局在

Secreted.

画像



SDS-PAGE - PLA2G1B protein (His tag) (ab63842)

12% SDS-PAGE separation of ab63842.

Molecular Weight: ~16 kDa.

Lane 1. Molecular weight marker

Lane 2. reduced and heated sample, 5µg/lane

Lane 3. non-reduced and non-heated sample, 5µg/lane

Please note: All products are "FOR RESEARCH USE ONLY AND ARE NOT INTENDED FOR DIAGNOSTIC OR THERAPEUTIC USE"

Our Abpromise to you: Quality guaranteed and expert technical support

- Replacement or refund for products not performing as stated on the datasheet
- Valid for 12 months from date of delivery
- Response to your inquiry within 24 hours
- We provide support in Chinese, English, French, German, Japanese and Spanish
- Extensive multi-media technical resources to help you
- We investigate all quality concerns to ensure our products perform to the highest standards

If the product does not perform as described on this datasheet, we will offer a refund or replacement. For full details of the Abpromise,

please visit <http://www.abcam.co.jp/abpromise> or contact our technical team.

Terms and conditions

- Guarantee only valid for products bought direct from Abcam or one of our authorized distributors