

Product datasheet

Recombinant Human Lipoamide Dehydrogenase protein ab93679

画像数 1

製品の概要

製品名	Recombinant Human Lipoamide Dehydrogenase protein
タンパク質長	Full length protein

製品の詳細

由来	Recombinant
由来	Escherichia coli
アミノ酸配列	
生物種	Human

特性

Our [Abpromise guarantee](#) covers the use of **ab93679** in the following tested applications.

The application notes include recommended starting dilutions; optimal dilutions/concentrations should be determined by the end user.

アプリケーション	SDS-PAGE Western blot
精製度	> 95 % SDS-PAGE. ab93679 is purified using conventional chromatography techniques.
製品の状態	Liquid

前処理および保存

保存方法および安定性	Shipped at 4°C. Upon delivery aliquot and store at -20°C or -80°C. Avoid repeated freeze / thaw cycles. Preservative: None Constituents: 10% Glycerol, 0.1M Sodium chloride, 20mM Tris HCl, 1mM DTT, pH 8.0
------------	---

関連情報

機能	Lipoamide dehydrogenase is a component of the glycine cleavage system as well as of the alpha-ketoacid dehydrogenase complexes. Involved in the hyperactivation of spermatazoa
----	--

during capacitation and in the spermatazoal acrosome reaction.

関連疾患

Note=Defects in DLD are involved in the development of congenital infantile lactic acidosis. Defects in DLD are a cause of maple syrup urine disease (MSUD) [MIM:248600]. MSUD is characterized by mental and physical retardation, feeding problems and a maple syrup odor to the urine. The keto acids of the branched-chain amino acids are present in the urine, resulting from a block in oxidative decarboxylation.

配列類似性

Belongs to the class-I pyridine nucleotide-disulfide oxidoreductase family.

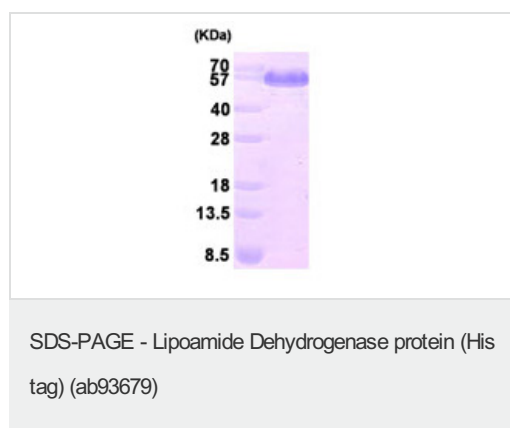
翻訳後修飾

Tyrosine phosphorylated.

細胞内局在

Mitochondrion matrix.

画像



15% SDS-PAGE analysis of ab93679 (3µg).

Please note: All products are "FOR RESEARCH USE ONLY AND ARE NOT INTENDED FOR DIAGNOSTIC OR THERAPEUTIC USE"

Our Abpromise to you: Quality guaranteed and expert technical support

- Replacement or refund for products not performing as stated on the datasheet
- Valid for 12 months from date of delivery
- Response to your inquiry within 24 hours
- We provide support in Chinese, English, French, German, Japanese and Spanish
- Extensive multi-media technical resources to help you
- We investigate all quality concerns to ensure our products perform to the highest standards

If the product does not perform as described on this datasheet, we will offer a refund or replacement. For full details of the Abpromise, please visit <http://www.abcam.co.jp/abpromise> or contact our technical team.

Terms and conditions

- Guarantee only valid for products bought direct from Abcam or one of our authorized distributors