

Product datasheet

Recombinant Human Lin28 protein ab89225

画像数 2

製品の概要

製品名	Recombinant Human Lin28 protein
タンパク質長	Protein fragment

製品の詳細

由来	Recombinant
由来	Escherichia coli
アミノ酸配列	
生物種	Human
領域	42 to 209

特性

Our [Abpromise guarantee](#) covers the use of **ab89225** in the following tested applications.

The application notes include recommended starting dilutions; optimal dilutions/concentrations should be determined by the end user.

アプリケーション	SDS-PAGE
精製度	> 85 % SDS-PAGE. ab89225 is purified using conventional chromatography techniques.
製品の状態	Liquid

前処理および保存

保存方法および安定性	Shipped at 4°C. Upon delivery aliquot and store at -20°C or -80°C. Avoid repeated freeze / thaw cycles. pH: 8.00 Constituents: 0.316% Tris HCl, 10% Glycerol, 0.58% Sodium chloride, 0.002% PMSF
------------	--

関連情報

機能	Acts as a 'translational enhancer', driving specific mRNAs to polysomes and thus increasing the efficiency of protein synthesis. Its association with the translational machinery and target mRNAs
----	--

results in an increased number of initiation events per molecule of mRNA and, indirectly, in stabilizing the mRNAs. Binds IGF2 mRNA, MYOD1 mRNA, ARBP/36B4 ribosomal protein mRNA and its own mRNA. Essential for skeletal muscle differentiation program through the translational up-regulation of IGF2 expression (By similarity). Acts as a suppressor of microRNA (miRNA) biogenesis by specifically binding the precursor let-7 (pre-let-7), a miRNA precursor. Acts by binding pre-let-7 and recruiting ZCCHC11/TUT4 uridylyltransferase, leading to the terminal uridylation of pre-let-7. Uridylated pre-let-7 miRNAs fail to be processed by Dicer and undergo degradation. Degradation of pre-let-7 in embryonic stem (ES) cells contributes to the maintenance of ES cells. In contrast, LIN28A down-regulation in neural stem cells by miR-125, allows the processing of pre-let-7. Specifically recognizes the 5'-GGAG-3' motif in the terminal loop of pre-let-7. Also recognizes and binds non pre-let-7 pre-miRNAs that contain the 5'-GGAG-3' motif in the terminal loop, leading to their terminal uridylation and subsequent degradation.

**組織特異性**

Expressed in embryonic stem cells (ES cells), placenta and testis.

**配列類似性**

Belongs to the lin-28 family.  
 Contains 2 CCHC-type zinc fingers.  
 Contains 1 CSD (cold-shock) domain.

**発生段階**

Expressed in fetal liver. Expression decreases during differentiation of ES cells or upon induction of neuronal differentiation by retinoic acid.

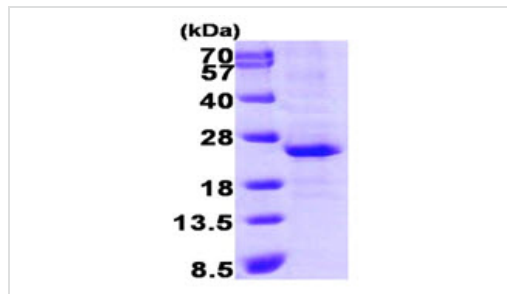
**ドメイン**

The CSD domain is required for function in muscle differentiation.

**細胞内局在**

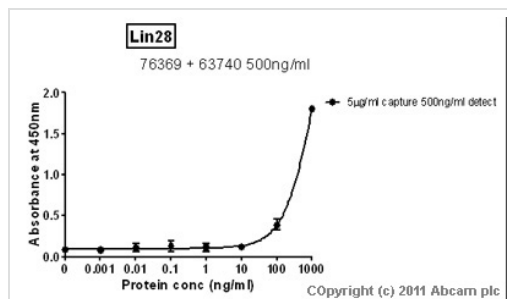
Cytoplasm. Nucleus > nucleolus. Nucleolar localization observed in 10-15% of the nuclei in differentiated myotubes (By similarity). Shuttles between the cytoplasm and the nucleus. Localizes to cytoplasmic processing bodies and stress granules.

**画像**



15% SDS-PAGE showing ab89225 at approximately 21.1kDa (3µg).

SDS-PAGE - Lin28 protein (His tag) (ab89225)



Standard Curve for Lin28 (Analyte: [Lin28 protein \(His tag\) \(ab89225\)](#)); dilution range 1 pg/ml to 1 ug/ml using Capture Antibody [Mouse monoclonal \[6D1F9\] to Lin28 \(ab76369\)](#) at 0.2 ug/ml and Detector Antibody [Rabbit polyclonal to Lin28 \(ab63740\)](#) at 0.1 ug/ml.

Sandwich ELISA - Lin28 protein (His tag) (ab89225)

### **Our Abpromise to you: Quality guaranteed and expert technical support**

---

- Replacement or refund for products not performing as stated on the datasheet
- Valid for 12 months from date of delivery
- Response to your inquiry within 24 hours
  
- We provide support in Chinese, English, French, German, Japanese and Spanish
- Extensive multi-media technical resources to help you
- We investigate all quality concerns to ensure our products perform to the highest standards

If the product does not perform as described on this datasheet, we will offer a refund or replacement. For full details of the Abpromise, please visit <http://www.abcam.co.jp/abpromise> or contact our technical team.

### **Terms and conditions**

---

- Guarantee only valid for products bought direct from Abcam or one of our authorized distributors