

## Product datasheet

# Recombinant Human LAT protein ab113124

画像数 1

### 製品の概要

製品名	Recombinant Human LAT protein
タンパク質長	Protein fragment

### 製品の詳細

由来	Recombinant
由来	Escherichia coli
アミノ酸配列	
アクセッション番号	<a href="#">O43561-2</a>
生物種	Human
配列	<b>MGSSHHHHHSSGLVPRGSHM</b> HCHRLPGSYDSTSSDSLPRGIQFKRPHT VAPWPPAYPPVTSYPPLSQPDLLPIPRSPQPLGGSHRTPSSRRRSDGANS VASYENEEPACEDADEDEDYHNPGYLVVLPDSTPATSTAAPSAPALSTP GIRDSAFSMESIDDYVNVPESESAEASLDGSREYVNVSQELHPGAAKTE PAALSSQEAEVEEEGAPDYENLQELN
分子量	24 kDa including tags
領域	28 to 233
タグ	His tag N-Terminus

### 特性

Our [Abpromise guarantee](#) covers the use of **ab113124** in the following tested applications.

The application notes include recommended starting dilutions; optimal dilutions/concentrations should be determined by the end user.

アプリケーション	SDS-PAGE Mass Spectrometry
質量分析	MALDI-TOF
精製度	> 95 % SDS-PAGE. ab113124 was purified using conventional chromatography.
製品の状態	Liquid

### 前処理および保存

## 保存方法および安定性

Shipped at 4°C. Store at +4°C short term (1-2 weeks). Upon delivery aliquot. Store at -20°C or -80°C. Avoid freeze / thaw cycle.

pH: 8.00

Constituents: 0.32% Tris HCl, 0.02% DTT

## 関連情報

### 機能

Required for TCR (T-cell antigen receptor)- and pre-TCR-mediated signaling, both in mature T-cells and during their development. Involved in FCGR3 (low affinity immunoglobulin gamma Fc region receptor III)-mediated signaling in natural killer cells and FCER1 (high affinity immunoglobulin epsilon receptor)-mediated signaling in mast cells. Couples activation of these receptors and their associated kinases with distal intracellular events such as mobilization of intracellular calcium stores, PKC activation, MAPK activation or cytoskeletal reorganization through the recruitment of PLCG1, GRB2, GRAP2, and other signaling molecules.

### 組織特異性

Expressed in thymus, T-cells, NK cells, mast cells and, at lower levels, in spleen. Present in T-cells but not B-cells (at protein level).

### 翻訳後修飾

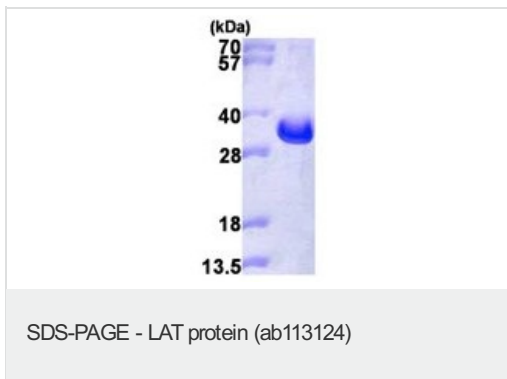
Phosphorylated on tyrosines by ZAP-70 upon TCR activation, or by SYK upon other immunoreceptor activation; which leads to the recruitment of multiple signaling molecules. Is one of the most prominently tyrosine-phosphorylated proteins detected following TCR engagement. May be dephosphorylated by PTPRJ.

Palmitoylation of Cys-26 and Cys-29 is required for raft targeting and efficient phosphorylation.

### 細胞内局在

Cell membrane. Present in lipid rafts.

## Recombinant Human LAT protein 画像



15% SDS-PAGE analysis of ab113124 (3 µg).

Molecular weight on SDS-PAGE will appear higher.

**Please note:** All products are "FOR RESEARCH USE ONLY AND ARE NOT INTENDED FOR DIAGNOSTIC OR THERAPEUTIC USE"

## Our Abpromise to you: Quality guaranteed and expert technical support

- Replacement or refund for products not performing as stated on the datasheet
- Valid for 12 months from date of delivery
- Response to your inquiry within 24 hours
- We provide support in Chinese, English, French, German, Japanese and Spanish
- Extensive multi-media technical resources to help you
- We investigate all quality concerns to ensure our products perform to the highest standards

If the product does not perform as described on this datasheet, we will offer a refund or replacement. For full details of the Abpromise,

please visit <http://www.abcam.co.jp/abpromise> or contact our technical team.

## **Terms and conditions**

---

- Guarantee only valid for products bought direct from Abcam or one of our authorized distributors