

Product datasheet

Recombinant Human G3BP protein ab103304

画像数 1

製品の概要

製品名	Recombinant Human G3BP protein
タンパク質長	Full length protein

製品の詳細

由来	Recombinant
由来	Escherichia coli
アミノ酸配列	
アクセッション番号	Q13283
生物種	Human
配列	MVMEKPSPLLVGREFVRQYYTLLNQAPDMLHRFYGKNSSYVHGGLDSNGK PADAVYGQKEIHRKVMSQNFTNCHTKIRHVDAHATLNDGVVVQVMGLLSN NNQALRRFMQTFVLAPEGSVANKFYVHNDIFRYQDEVFGGFVTEPQESE EEVEEPEERQQTPEVVPDDSGTFYDQAVVSNDMEEHLEEPVAEPEPDPEP EPEQEPVSEIQEEKPEPVLEETAPEDAQKSSSPAPADIAQTVQEDLRTFS WASVTSKNLPPSGAVPVTGIPPHVVKVPASQPRPESKPESQIPPQRPQRD QVRVQRINIPQRGPRPIREAGEQGDIEPRRMVRHPDASHQLFIGNLPHE VDKSELKDFQSYGNVVELRINSGGKLPNFGFVVFDDSEPVQKVLNRP I MFRGEVRLNVEEKKTRAAREGDRRDNRLRGPGGPRGGLGGMRGPPRGGM VQKPGFGVGRGLAPRQVEHHHHHH
分子量	53 kDa including tags
領域	1 to 466
タグ	His tag C-Terminus

特性

Our [Abpromise guarantee](#) covers the use of **ab103304** in the following tested applications.

The application notes include recommended starting dilutions; optimal dilutions/concentrations should be determined by the end user.

アプリケーション	SDS-PAGE Mass Spectrometry
質量分析	MALDI-TOF
精製度	> 85 % SDS-PAGE. ab103304 was purified using conventional chromatography techniques.

製品の状態

Liquid

前処理および保存**保存方法および安定性**

Shipped at 4°C. Store at +4°C short term (1-2 weeks). Upon delivery aliquot. Store at -20°C or -80°C. Avoid freeze / thaw cycle.

Preservative: None

Constituents: 10% Glycerol, 20mM Tris HCl, 2mM DTT, 100mM Sodium chloride, pH 8.0

関連情報**機能**

May be a regulated effector of stress granule assembly. Phosphorylation-dependent sequence-specific endoribonuclease in vitro. Cleaves exclusively between cytosine and adenine and cleaves MYC mRNA preferentially at the 3'-UTR. ATP- and magnesium-dependent helicase. Unwinds preferentially partial DNA and RNA duplexes having a 17 bp annealed portion and either a hanging 3' tail or hanging tails at both 5'- and 3'-ends. Unwinds DNA/DNA, RNA/DNA, and RNA/RNA substrates with comparable efficiency. Acts unidirectionally by moving in the 5' to 3' direction along the bound single-stranded DNA.

組織特異性

Ubiquitous.

配列類似性

Contains 1 NTF2 domain.

Contains 1 RRM (RNA recognition motif) domain.

ドメイン

The NTF2 domain mediates multimerization.

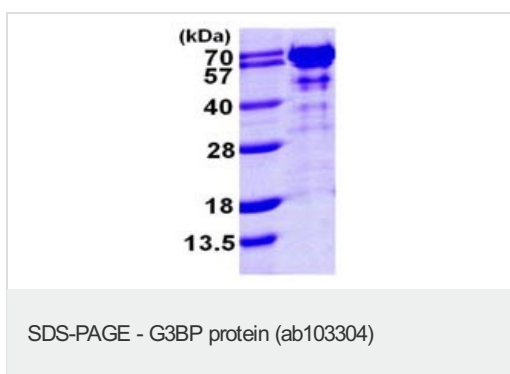
翻訳後修飾

Phosphorylated exclusively on serine residues. Hyperphosphorylated in quiescent fibroblasts. Hypophosphorylation leads to a decrease in endoribonuclease activity (By similarity). RASA1-dependent phosphorylation of Ser-149 induces a conformational change that prevents self-association. Dephosphorylation after HRAS activation is required for stress granule assembly. Ser-149 phosphorylation induces partial nuclear localization.

Arg-435 is dimethylated, probably to asymmetric dimethylarginine.

細胞内局在

Cytoplasm. Cytoplasm > cytosol. Cell membrane. Nucleus. Cytoplasmic in proliferating cells, can be recruited to the plasma membrane in exponentially growing cells (By similarity). Cytosolic and partially nuclear in resting cells. Recruited to stress granules (SGs) upon either arsenite or high temperature treatment. Recruitment to SGs is influenced by HRAS.

Recombinant Human G3BP protein 画像

15% SDS-PAGE analysis of 3µg ab103304.

Our Abpromise to you: Quality guaranteed and expert technical support

- Replacement or refund for products not performing as stated on the datasheet
- Valid for 12 months from date of delivery
- Response to your inquiry within 24 hours

- We provide support in Chinese, English, French, German, Japanese and Spanish
- Extensive multi-media technical resources to help you
- We investigate all quality concerns to ensure our products perform to the highest standards

If the product does not perform as described on this datasheet, we will offer a refund or replacement. For full details of the Abpromise, please visit <http://www.abcam.co.jp/abpromise> or contact our technical team.

Terms and conditions

- Guarantee only valid for products bought direct from Abcam or one of our authorized distributors