

## Product datasheet

# Recombinant Human Ephrin B2 protein ab92862

### 画像数 1

#### 製品の概要

---

製品名	Recombinant Human Ephrin B2 protein
タンパク質長	Protein fragment

#### 製品の詳細

---

由来	Recombinant
由来	HEK 293 cells

#### アミノ酸配列

生物種	Human
領域	1 to 227

#### 特性

---

Our [Abpromise guarantee](#) covers the use of **ab92862** in the following tested applications.

The application notes include recommended starting dilutions; optimal dilutions/concentrations should be determined by the end user.

アプリケーション	Western blot ELISA SDS-PAGE
製品の状態	Lyophilised
備考	After reconstitution, store in working aliquots at -80°C.

#### 前処理および保存

---

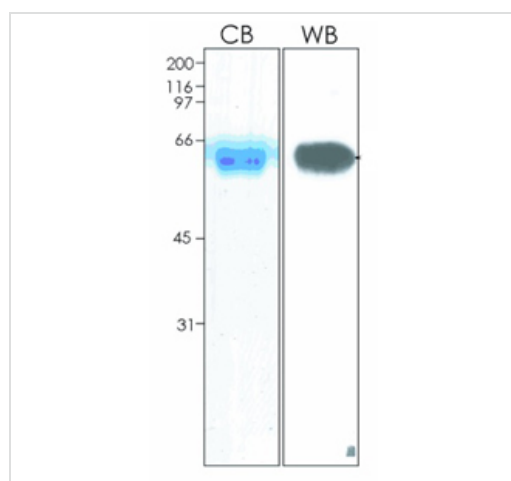
保存方法および安定性	Shipped on dry ice. Upon delivery aliquot and store at -80°C. Avoid freeze / thaw cycles. Preservative: None Constituents: PBS, pH 7.4
再構成	Please add 20ul of PBS to make 0.5mg/ml

#### 関連情報

---

<b>機能</b>	Cell surface transmembrane ligand for Eph receptors, a family of receptor tyrosine kinases which are crucial for migration, repulsion and adhesion during neuronal, vascular and epithelial development. Binds promiscuously Eph receptors residing on adjacent cells, leading to contact-dependent bidirectional signaling into neighboring cells. The signaling pathway downstream of the receptor is referred to as forward signaling while the signaling pathway downstream of the ephrin ligand is referred to as reverse signaling. Binds to receptor tyrosine kinase including EPHA4, EPHA3 and EPHB4. Together with EPHB4 plays a central role in heart morphogenesis and angiogenesis through regulation of cell adhesion and cell migration. EPHB4-mediated forward signaling controls cellular repulsion and segregation from EFNB2-expressing cells. May play a role in constraining the orientation of longitudinally projecting axons. (Microbial infection) Acts as a receptor for Hendra virus and Nipah virus.
<b>組織特異性</b>	Lung and kidney.
<b>配列類似性</b>	Belongs to the ephrin family. Contains 1 ephrin RBD (ephrin receptor-binding) domain.
<b>翻訳後修飾</b>	Inducible phosphorylation of tyrosine residues in the cytoplasmic domain.
<b>細胞内局在</b>	Membrane.

## 画像



10% SDS-PAGE of ab92862 stained with Coomassie Blue (CB) and immunoblotted with polyclonal antibody against Human Ephrin B2 (WB)

SDS-PAGE - Eprhin B2 protein (Fc Chimera His Tag) (ab92862)

**Please note:** All products are "FOR RESEARCH USE ONLY AND ARE NOT INTENDED FOR DIAGNOSTIC OR THERAPEUTIC USE"

## Our Abpromise to you: Quality guaranteed and expert technical support

- Replacement or refund for products not performing as stated on the datasheet
- Valid for 12 months from date of delivery
- Response to your inquiry within 24 hours
- We provide support in Chinese, English, French, German, Japanese and Spanish
- Extensive multi-media technical resources to help you
- We investigate all quality concerns to ensure our products perform to the highest standards

If the product does not perform as described on this datasheet, we will offer a refund or replacement. For full details of the Abpromise, please visit <http://www.abcam.co.jp/abpromise> or contact our technical team.

## Terms and conditions

---

- Guarantee only valid for products bought direct from Abcam or one of our authorized distributors