

Product datasheet

Recombinant Human DACH1 protein ab114777

画像数 1

製品の概要

製品名	Recombinant Human DACH1 protein
タンパク質長	Protein fragment

製品の詳細

由来	Recombinant
由来	Wheat germ

アミノ酸配列

アクセッション番号	Q9UI36-2
生物種	Human
配列	TELKMDFLRERELRETLEKQLAMEQKNRAIVQKRLKKEKKAKRKLQEALE FETKRREQAEQTLKQAASTDSLRLVNLDSLTPETIEADRSGGRDAERTIQD GRLYLKTTV
分子量	38 kDa including tags
領域	596 to 704

特性

Our [Abpromise guarantee](#) covers the use of **ab114777** in the following tested applications.

The application notes include recommended starting dilutions; optimal dilutions/concentrations should be determined by the end user.

アプリケーション	SDS-PAGE ELISA Western blot
製品の状態	Liquid
備考	Protein concentration is above or equal to 0.05 mg/ml. Best used within three months from the date of receipt.

前処理および保存

保存方法および安定性	Shipped on dry ice. Upon delivery aliquot and store at -80°C. Avoid freeze / thaw cycles.
------------	---

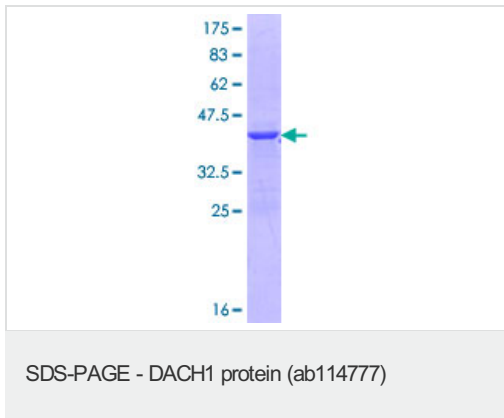
pH: 8.00

Constituents: 0.3% Glutathione, 0.79% Tris HCl

関連情報

機能	Transcription factor that is involved in regulation of organogenesis. Seems to be a regulator of SIX1, SIX6 and probably SIX5. Corepression of precursor cell proliferation in myoblasts by SIX1 is switched to coactivation through recruitment of EYA3 to the SIX1-DACH1 complex. Transcriptional activation seems also to involve association of CREBBP. Seems to act as a corepressor of SIX6 in regulating proliferation by directly repressing cyclin-dependent kinase inhibitors, including the p27Kip1 promoter (By similarity). Inhibits TGF-beta signaling through interaction with SMAD4 and NCOR1. Binds to chromatin DNA via its DACHbox-N domain.
組織特異性	Widely expressed. Isoform 2 is found in brain, heart, kidney, liver, leukocytes and spleen. Isoform 3 is found in liver and heart. Isoform 4 is found in spleen.
配列類似性	Belongs to the DACH/dachshund family.
ドメイン	The DACHbox-N/DD1 domain forms a structure containing a DNA binding motif similar to that of the forkhead/winged helix domain.
細胞内局在	Nucleus.

画像



ab114777 analysed on a 12.5% SDS-PAGE gel stained with Coomassie Blue.

Please note: All products are "FOR RESEARCH USE ONLY AND ARE NOT INTENDED FOR DIAGNOSTIC OR THERAPEUTIC USE"

Our Abpromise to you: Quality guaranteed and expert technical support

- Replacement or refund for products not performing as stated on the datasheet
- Valid for 12 months from date of delivery
- Response to your inquiry within 24 hours
- We provide support in Chinese, English, French, German, Japanese and Spanish
- Extensive multi-media technical resources to help you
- We investigate all quality concerns to ensure our products perform to the highest standards

If the product does not perform as described on this datasheet, we will offer a refund or replacement. For full details of the Abpromise,

please visit <http://www.abcam.co.jp/abpromise> or contact our technical team.

Terms and conditions

- Guarantee only valid for products bought direct from Abcam or one of our authorized distributors