

Product datasheet

Recombinant Human Cullin 1 protein ab99960

画像数 1

製品の概要

製品名	Recombinant Human Cullin 1 protein
タンパク質長	Protein fragment

製品の詳細

由来	Recombinant
由来	Escherichia coli
アミノ酸配列	
アクセッション番号	Q13616
生物種	Human
配列	<b>MGSSHHHHHSSGLVPRGSH</b> MSSTRSQNP HGLKQIGLDQIWDDL RAGIQQ VYTRQSMAKSRYMELYTHVYNYCTSVHQSNQARGAGVPPSKSKKGQTPGG AQFVGLELYKRLKEFLKNYLTNLLKDGEDLMDESVLKFYTTQQWEDYRFSS KVLNGICAYLNRHWVRRECDEGRKGIYEIYSLALVTWRDCLFRPLNKQVT NAVLKLI EKERNGETINTRLISGVVQSYVELGLNEDDAFAKGPTLTVYKE SFESQFLADTERFYTRETEFLQQNPVTEYMKKAEARLLEEQR RVQVYLH ESTQDELARKCEQV LIEKHLEIFHTEFQNLLDADKNE DLGRMYNLVSRIQ DGLGELK K LLETHIHNQGLAAIEKCGEALNDPKMYVQTVL DVHKKYNAL VMSAFNNDAGFVAALDKACGRFINNNAVTK
分子量	49 kDa including tags
領域	1 to 410
タグ	His tag N-Terminus

特性

Our [Abpromise guarantee](#) covers the use of **ab99960** in the following tested applications.

The application notes include recommended starting dilutions; optimal dilutions/concentrations should be determined by the end user.

アプリケーション	SDS-PAGE Mass Spectrometry
質量分析	MALDI-TOF
精製度	> 95 % SDS-PAGE. ab99960 is purified using conventional chromatography techniques.

**製品の状態**

Liquid

**前処理および保存**

---

**保存方法および安定性**

Shipped at 4°C. Upon delivery aliquot and store at -20°C or -80°C. Avoid repeated freeze / thaw cycles.

Preservative: None

Constituents: 10% Glycerol, 20mM Tris HCl, 100mM Sodium chloride, 1mM DTT, pH 8.0

**関連情報**

---

**機能**

Core component of multiple cullin-RING-based SCF (SKP1-CUL1-F-box protein) E3 ubiquitin-protein ligase complexes, which mediate the ubiquitination of proteins involved in cell cycle progression, signal transduction and transcription. In the SCF complex, serves as a rigid scaffold that organizes the SKP1-F-box protein and RBX1 subunits. May contribute to catalysis through positioning of the substrate and the ubiquitin-conjugating enzyme. The E3 ubiquitin-protein ligase activity of the complex is dependent on the neddylation of the cullin subunit and is inhibited by the association of the deneddylated cullin subunit with TIP120A/CAND1. The functional specificity of the SCF complex depends on the F-box protein as substrate recognition component.

SCF(BTRC) and SCF(FBXW11) direct ubiquitination of CTNNB1 and participate in Wnt signaling. SCF(FBXW11) directs ubiquitination of phosphorylated NFKBIA. SCF(BTRC) directs ubiquitination of NFKBIB, NFKBIE, ATF4, SMAD3, SMAD4, CDC25A, FBXO5 and probably NFKB2. SCF(SKP2) directs ubiquitination of phosphorylated CDKN1B/p27kip and is involved in regulation of G1/S transition. SCF(SKP2) directs ubiquitination of ORC1, CDT1, RBL2, ELF4, CDKN1A, RAG2, FOXO1A, and probably MYC and TAL1. SCF(FBXW7) directs ubiquitination of cyclin E, NOTCH1 released notch intracellular domain (NICD), and probably PSEN1. SCF(FBXW2) directs ubiquitination of GCM1. SCF(FBXO32) directs ubiquitination of MYOD1. SCF(FBXO7) directs ubiquitination of BIRC2 and DLGAP5. SCF(FBXO33) directs ubiquitination of YBX1. SCF(FBXO11) does not seem to direct ubiquitination of TP53. SCF(BTRC) mediates the ubiquitination of NFKBIA at 'Lys-21' and 'Lys-22'; the degradation frees the associated NFKB1-RELA dimer to translocate into the nucleus and to activate transcription. SCF(Cyclin F) directs ubiquitination of CP110.

**組織特異性**

Expressed in lung fibroblasts.

**パスウェイ**

Protein modification; protein ubiquitination.

**配列類似性**

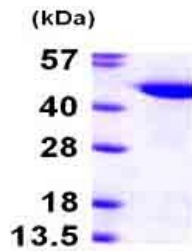
Belongs to the cullin family.

**翻訳後修飾**

Neddylated; which enhances the ubiquitination activity of SCF. Deneddylated via its interaction with the COP9 signalosome (CSN) complex. Deneddylated by Epstein-Barr virus BPLF1 leading to a S-phase-like environment that is required for efficient replication of the viral genome.

**Recombinant Human Cullin 1 protein 画像**

---



15% SDS-PAGE showing ab99960 at approximately 49.4 kDa (3 $\mu$ g).

SDS-PAGE - Cullin 1 protein (ab99960)

**Please note:** All products are "FOR RESEARCH USE ONLY AND ARE NOT INTENDED FOR DIAGNOSTIC OR THERAPEUTIC USE"

### **Our Abpromise to you: Quality guaranteed and expert technical support**

- Replacement or refund for products not performing as stated on the datasheet
- Valid for 12 months from date of delivery
- Response to your inquiry within 24 hours
- We provide support in Chinese, English, French, German, Japanese and Spanish
- Extensive multi-media technical resources to help you
- We investigate all quality concerns to ensure our products perform to the highest standards

If the product does not perform as described on this datasheet, we will offer a refund or replacement. For full details of the Abpromise, please visit <http://www.abcam.co.jp/abpromise> or contact our technical team.

### **Terms and conditions**

- Guarantee only valid for products bought direct from Abcam or one of our authorized distributors