

Product datasheet

Recombinant Human Caveolin-3 protein ab114264

画像数 1

製品の概要

製品名	Recombinant Human Caveolin-3 protein
タンパク質長	Full length protein

製品の詳細

由来	Recombinant
由来	Wheat germ
アミノ酸配列	
アクセッション番号	P56539
生物種	Human
配列	MMAEEHTDLEAQIVKDIHCKEIDLVNRDPKNINEDIVKVDVFEDVIAEPVG TYSFDGVWKVSYTTFTVSKYWCYRLLSTLLGVPLALLWGFLFACISFCHI WAVVPCIKSYLIEIQCISHIYSLCIRTFNPLFAALGQVCSSIKVLRKE V
分子量	43 kDa including tags
領域	1 to 151
タグ	GST tag N-Terminus

特性

Our [Abpromise guarantee](#) covers the use of **ab114264** in the following tested applications.

The application notes include recommended starting dilutions; optimal dilutions/concentrations should be determined by the end user.

アプリケーション	ELISA
	SDS-PAGE
	Western blot

製品の状態	Liquid
-------	--------

備考	Protein concentration is above or equal to 0.05 mg/ml. This protein is best used within three months from the date of receipt.
----	---

前処理および保存

保存方法および安定性

Shipped on dry ice. Upon delivery aliquot and store at -80°C. Avoid freeze / thaw cycles.

pH: 8.00

Constituents: 0.3% Glutathione, 0.79% Tris HCl

関連情報

機能

May act as a scaffolding protein within caveolar membranes. Interacts directly with G-protein alpha subunits and can functionally regulate their activity. May also regulate voltage-gated potassium channels. Plays a role in the sarcolemma repair mechanism of both skeletal muscle and cardiomyocytes that permits rapid resealing of membranes disrupted by mechanical stress.

組織特異性

Expressed predominantly in muscle.

関連疾患

Defects in CAV3 are the cause of limb-girdle muscular dystrophy type 1C (LGMD1C) [MIM:607801]. LGMD1C is a myopathy characterized by calf hypertrophy and mild to moderate proximal muscle weakness. LGMD1C inheritance can be autosomal dominant or recessive. Defects in CAV3 are a cause of hyperCKmia (HYPCK) [MIM:123320]. It is a disease characterized by persistent elevated levels of serum creatine kinase without muscle weakness. Defects in CAV3 are a cause of rippling muscle disease (RMD) [MIM:606072]. RMD is a rare disorder characterized by mechanically triggered contractions of skeletal muscle. In RMD, mechanical stimulation leads to electrically silent muscle contractions that spread to neighboring fibers that cause visible ripples to move over the muscle. Defects in CAV3 are a cause of cardiomyopathy familial hypertrophic (CMH) [MIM:192600]; also designated FHC or HCM. Familial hypertrophic cardiomyopathy is a hereditary heart disorder characterized by ventricular hypertrophy, which is usually asymmetric and often involves the interventricular septum. The symptoms include dyspnea, syncope, collapse, palpitations, and chest pain. They can be readily provoked by exercise. The disorder has inter- and intrafamilial variability ranging from benign to malignant forms with high risk of cardiac failure and sudden cardiac death. Defects in CAV3 are the cause of long QT syndrome type 9 (LQT9) [MIM:611818]. Long QT syndromes are heart disorders characterized by a prolonged QT interval on the ECG and polymorphic ventricular arrhythmias. They cause syncope and sudden death in response to exercise or emotional stress. They can present with a sentinel event of sudden cardiac death in infancy. Defects in CAV3 can be a cause of sudden infant death syndrome (SIDS) [MIM:272120]. SIDS is the sudden death of an infant younger than 1 year that remains unexplained after a thorough case investigation, including performance of a complete autopsy, examination of the death scene, and review of clinical history. Pathophysiologic mechanisms for SIDS may include respiratory dysfunction, cardiac dysrhythmias, cardiorespiratory instability, and inborn errors of metabolism, but definitive pathogenic mechanisms precipitating an infant sudden death remain elusive. Long QT syndromes-associated mutations can be responsible for some SIDS cases.

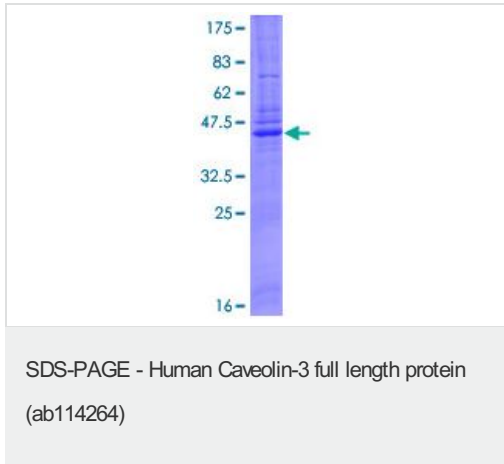
配列類似性

Belongs to the caveolin family.

細胞内局在

Golgi apparatus membrane. Cell membrane. Membrane > caveola. Potential hairpin-like structure in the membrane. Membrane protein of caveolae.

画像



ab114264 analysed on a 12.5% SDS-PAGE gel stained with Coomassie Blue.

Please note: All products are "FOR RESEARCH USE ONLY AND ARE NOT INTENDED FOR DIAGNOSTIC OR THERAPEUTIC USE"

Our Abpromise to you: Quality guaranteed and expert technical support

- Replacement or refund for products not performing as stated on the datasheet
- Valid for 12 months from date of delivery
- Response to your inquiry within 24 hours
- We provide support in Chinese, English, French, German, Japanese and Spanish
- Extensive multi-media technical resources to help you
- We investigate all quality concerns to ensure our products perform to the highest standards

If the product does not perform as described on this datasheet, we will offer a refund or replacement. For full details of the Abpromise, please visit <http://www.abcam.co.jp/abpromise> or contact our technical team.

Terms and conditions

- Guarantee only valid for products bought direct from Abcam or one of our authorized distributors