

Product datasheet

Recombinant Human Calsequestrin 2 protein ab93736

画像数 1

製品の概要

製品名	Recombinant Human Calsequestrin 2 protein
タンパク質長	Full length protein

製品の詳細

由来	Recombinant
由来	Escherichia coli

アミノ酸配列

生物種	Human
配列	<p>MRGSHHHHHH GMASMTGGQQ MGRDLYDDDD</p> <p>KDRWGSMEEG LNFPTYDGKD RVVSLSEKNF</p> <p>KQVLKKYDLL CLYYHEPVSS DKVTQKQFQL</p> <p>KEIVLELVAQ VLEHKAIGFV MVDAKKEAKL</p> <p>AKKLGFDDEG SLYILKGDRT IEFDGEFAAD</p> <p>VLVEFLLDLI EDPVEIISK LEVQAFERIE</p> <p>DYIKLIGFFK SEDSEYKAF EEAAEHFQPY</p> <p>IKFFATFDKG VAKKLSLKMN EVDFYEPFMD</p> <p>EPIAIPNKPY TEEELVEFVK EHQRPTLRRL</p> <p>RPEEMFETWE DDLNGIHIVA FAEKSDPDGY</p> <p>EFLEILKQVA RDNTDNPDL ILWIDPDDFP</p> <p>LLVAYWEKTF KIDLFRPQIG VVNVTDADSV</p> <p>WMEIPDDDDL PTAELEDWI EDVLSGKINT</p> <p>EDDDEDDDDD DNSDEEDNDD SDDDDDE</p>

特性

Our [Abpromise guarantee](#) covers the use of **ab93736** in the following tested applications.

The application notes include recommended starting dilutions; optimal dilutions/concentrations should be determined by the end user.

アプリケーション	SDS-PAGE
精製度	> 95 % SDS-PAGE. ab93736 was purified using conventional chromatography techniques.
製品の状態	Liquid

前処理および保存

保存方法および安定性

Shipped at 4°C. Store at +4°C short term (1-2 weeks). Upon delivery aliquot. Store at -20°C or -80°C. Avoid freeze / thaw cycle.

Preservative: None

Constituents: 20% Glycerol, 0.1M Sodium chloride, 20mM Tris HCl, 1mM DTT, pH 8.0

関連情報

機能

Calsequestrin is a high-capacity, moderate affinity, calcium-binding protein and thus acts as an internal calcium store in muscle. The release of calcium bound to calsequestrin through a calcium release channel triggers muscle contraction. Binds 40 to 50 moles of calcium.

関連疾患

Defects in CASQ2 are the cause of catecholaminergic polymorphic ventricular tachycardia type 2 (CPVT2) [MIM:611938]; also known as stress-induced polymorphic ventricular tachycardia (VTSIP). CPVT2 is an autosomal recessive form of arrhythmogenic disorder characterized by stress-induced, bidirectional ventricular tachycardia that may degenerate into cardiac arrest and cause sudden death.

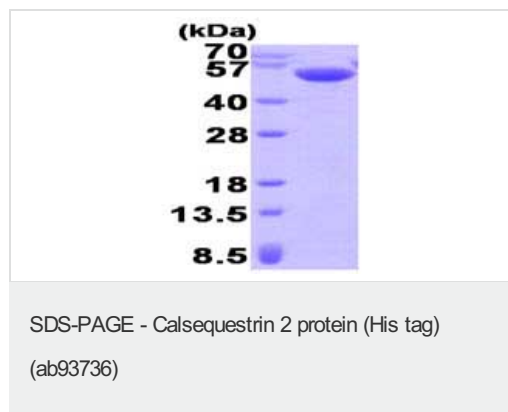
配列類似性

Belongs to the calsequestrin family.

細胞内局在

Sarcoplasmic reticulum lumen. This isoform of calsequestrin occurs in the sarcoplasmic reticulum's terminal cisternae luminal spaces of cardiac and slow skeletal muscle cells.

画像



15% SDS-PAGE analysis of ab93736 (3µg)

Please note: All products are "FOR RESEARCH USE ONLY AND ARE NOT INTENDED FOR DIAGNOSTIC OR THERAPEUTIC USE"

Our Abpromise to you: Quality guaranteed and expert technical support

- Replacement or refund for products not performing as stated on the datasheet
- Valid for 12 months from date of delivery
- Response to your inquiry within 24 hours
- We provide support in Chinese, English, French, German, Japanese and Spanish
- Extensive multi-media technical resources to help you
- We investigate all quality concerns to ensure our products perform to the highest standards

If the product does not perform as described on this datasheet, we will offer a refund or replacement. For full details of the Abpromise, please visit <http://www.abcam.co.jp/abpromise> or contact our technical team.

Terms and conditions

- Guarantee only valid for products bought direct from Abcam or one of our authorized distributors