

Product datasheet

Recombinant Human Calcium Pump PMCA4 ATPase protein
ab114628

画像数 1

製品の概要

| | |
|--------|---|
| 製品名 | Recombinant Human Calcium Pump PMCA4 ATPase protein |
| タンパク質長 | Protein fragment |

製品の詳細

| | |
|-----------|--|
| 由来 | Recombinant |
| 由来 | Wheat germ |
| アミノ酸配列 | |
| アクセッション番号 | P23634 |
| 生物種 | Human |
| 配列 | MTNPSDRVLPANSMAESREGDFGCTVMELRKLMELRSDALTQINVHYGG VQNLC SRLKTSPVEGLSGNPADLEKRRQVFGHNVIPPKPKT* |
| 分子量 | 36 kDa including tags |
| 領域 | 1 to 92 |

特性

Our [Abpromise guarantee](#) covers the use of **ab114628** in the following tested applications.

The application notes include recommended starting dilutions; optimal dilutions/concentrations should be determined by the end user.

| | |
|----------|--|
| アプリケーション | ELISA SDS-PAGE Western blot |
| 製品の状態 | Liquid |
| 備考 | Protein concentration is above or equal to 0.05 mg/ml. This protein is best used within three months from the date of receipt. |

前処理および保存

| | |
|------------|---|
| 保存方法および安定性 | Shipped on dry ice. Upon delivery aliquot and store at -80°C. Avoid freeze / thaw cycles. |
|------------|---|

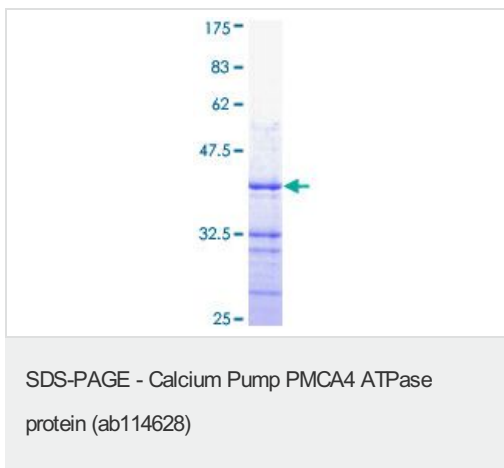
pH: 8.00

Constituents: 0.3% Glutathione, 0.79% Tris HCl

関連情報

| | |
|-------|--|
| 機能 | This magnesium-dependent enzyme catalyzes the hydrolysis of ATP coupled with the transport of calcium out of the cell. |
| 組織特異性 | Isoform XB is the most abundant isoform and is expressed ubiquitously. Isoforms containing segment Z have only been detected in heart, while isoforms containing segment a have been found in heart, stomach and brain cortex. |
| 配列類似性 | Belongs to the cation transport ATPase (P-type) (TC 3.A.3) family. Type IIB subfamily. |
| 細胞内局在 | Cell membrane. |

画像



ab114628 analysed by 12.5% SDS-PAGE and stained with Coomassie Blue.

Please note: All products are "FOR RESEARCH USE ONLY AND ARE NOT INTENDED FOR DIAGNOSTIC OR THERAPEUTIC USE"

Our Abpromise to you: Quality guaranteed and expert technical support

- Replacement or refund for products not performing as stated on the datasheet
- Valid for 12 months from date of delivery
- Response to your inquiry within 24 hours
- We provide support in Chinese, English, French, German, Japanese and Spanish
- Extensive multi-media technical resources to help you
- We investigate all quality concerns to ensure our products perform to the highest standards

If the product does not perform as described on this datasheet, we will offer a refund or replacement. For full details of the Abpromise, please visit <http://www.abcam.co.jp/abpromise> or contact our technical team.

Terms and conditions

- Guarantee only valid for products bought direct from Abcam or one of our authorized distributors