

## Product datasheet

# Recombinant Human CX3CR1 protein ab112276

画像数 1

### 製品の概要

製品名	Recombinant Human CX3CR1 protein
タンパク質長	Full length protein

### 製品の詳細

由来	Recombinant
由来	Wheat germ

### アミノ酸配列

アクセッション番号 [P49238](#)

生物種 Human

配列  
 MDQFPESVTENFEYDDLAEACYIGDIVVFGTVFLSIFYSVIFAIGLVGNL  
 LVVFALTNSKKPKSVTDIYLLNLALSDLLFVATLPFWTHYLINERGLHNA  
 MCKFTTAAFFIFGFFGSIFFITVISIDRYLAIVLAANSMNRTVQHGVVIS  
 LGVWAAAILVAAPQFMFTKQKENECLGDYPEVLQEIWPVLRNVETNFLGF  
 LLPLLIMSICYFRIIQTLFSCKNHKKAKAIKILLVVIVFFLFWTPYNVM  
 IFLETLKLYDFFPSCDMRKDLRLALSVTETVAFSHCCLNPLIYAFAGEKF  
 RRYLYHLYGKCLAVLCGRSVHVDFFSSSESQRSRHGSVLSSNFTYHTSDGD  
 ALLLL

分子量 65 kDa

領域 1 to 355

タグ GST tag N-Terminus

### 特性

Our [Abpromise guarantee](#) covers the use of **ab112276** in the following tested applications.

The application notes include recommended starting dilutions; optimal dilutions/concentrations should be determined by the end user.

アプリケーション	Western blot
	SDS-PAGE
	ELISA
	Other

製品の状態 Liquid

**備考** Best to use within three months from the date of receipt of this protein.

## 前処理および保存

**保存方法および安定性** Shipped on dry ice. Upon delivery aliquot and store at -80°C. Avoid freeze / thaw cycles.  
Constituents: 0.79% Tris HCl, 0.31% Glutathione  
Note: Reduced Glutathione

## 関連情報

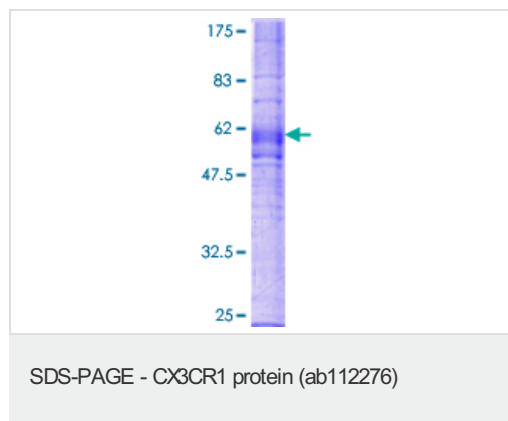
**機能** Receptor for the CX3C chemokine fractalkine and mediates both its adhesive and migratory functions. Acts as coreceptor with CD4 for HIV-1 virus envelope protein (in vitro). Isoform 2 and isoform 3 seem to be more potent HIV-1 coreceptors than isoform 1.

**組織特異性** Expressed in lymphoid and neural tissues.

**配列類似性** Belongs to the G-protein coupled receptor 1 family.

**細胞内局在** Cell membrane.

## 画像



12.5% SDS-PAGE analysis of ab112276, stained with Coomassie Blue.

**Please note:** All products are "FOR RESEARCH USE ONLY AND ARE NOT INTENDED FOR DIAGNOSTIC OR THERAPEUTIC USE"

## Our Abpromise to you: Quality guaranteed and expert technical support

- Replacement or refund for products not performing as stated on the datasheet
- Valid for 12 months from date of delivery
- Response to your inquiry within 24 hours
- We provide support in Chinese, English, French, German, Japanese and Spanish
- Extensive multi-media technical resources to help you
- We investigate all quality concerns to ensure our products perform to the highest standards

If the product does not perform as described on this datasheet, we will offer a refund or replacement. For full details of the Abpromise, please visit <http://www.abcam.co.jp/abpromise> or contact our technical team.

## Terms and conditions

---

- Guarantee only valid for products bought direct from Abcam or one of our authorized distributors