

Product datasheet

Recombinant Human CKAP1 protein ab117056

画像数 1

製品の概要

製品名	Recombinant Human CKAP1 protein
タンパク質長	Protein fragment

製品の詳細

由来	Recombinant
由来	Wheat germ
アミノ酸配列	
アクセッション番号	Q99426
生物種	Human
配列	SLTIAEFKCKLELLVGSPASCMELELYGVDDKFYSKLDQEDALLGSYPVD DGCRIHVIDHSGARLGEYEDVSRVEKYTISQEAYDQRQDTVRSFLKRSKL
分子量	37 kDa including tags
領域	31 to 130

特性

Our [Abpromise guarantee](#) covers the use of **ab117056** in the following tested applications.

The application notes include recommended starting dilutions; optimal dilutions/concentrations should be determined by the end user.

アプリケーション	Western blot SDS-PAGE ELISA
製品の状態	Liquid
備考	Protein concentration is above or equal to 0.05 mg/ml. Best used within three months from the date of receipt.

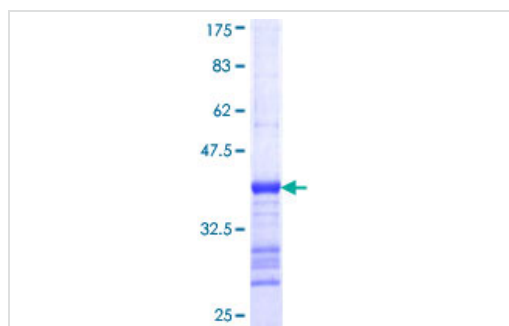
前処理および保存

保存方法および安定性	Shipped on dry ice. Upon delivery aliquot and store at -80°C. Avoid freeze / thaw cycles. pH: 8.00
------------	---

関連情報

機能	Binds to alpha-tubulin folding intermediates after their interaction with cytosolic chaperonin in the pathway leading from newly synthesized tubulin to properly folded heterodimer. Involved in regulation of tubulin heterodimer dissociation. May function as a negative regulator of axonal growth.
組織特異性	Found in most tissues.
配列類似性	Belongs to the TBCB family. Contains 1 CAP-Gly domain.
翻訳後修飾	Phosphorylation by PAK1 is required for normal function. Phosphorylated upon DNA damage, probably by ATM or ATR. Ubiquitinated in the presence of GAN which targets it for degradation by the proteasome.
細胞内局在	Cytoplasm. Cytoplasm > cytoskeleton. Colocalizes with microtubules. In differentiated neurons, located in the cytoplasm. In differentiating neurons, accumulates at the growth cone.

画像



12.5% SDS-PAGE showing ab117056 at approximately 36.63 kDa.
Stained with Coomassie Blue.

SDS-PAGE - CKAP1 protein (Human) (ab117056)

Please note: All products are "FOR RESEARCH USE ONLY AND ARE NOT INTENDED FOR DIAGNOSTIC OR THERAPEUTIC USE"

Our Abpromise to you: Quality guaranteed and expert technical support

- Replacement or refund for products not performing as stated on the datasheet
- Valid for 12 months from date of delivery
- Response to your inquiry within 24 hours
- We provide support in Chinese, English, French, German, Japanese and Spanish
- Extensive multi-media technical resources to help you
- We investigate all quality concerns to ensure our products perform to the highest standards

If the product does not perform as described on this datasheet, we will offer a refund or replacement. For full details of the Abpromise, please visit <http://www.abcam.co.jp/abpromise> or contact our technical team.

Terms and conditions

- Guarantee only valid for products bought direct from Abcam or one of our authorized distributors