

Product datasheet

Recombinant Human Bile salt-activated lipase protein ab114625

画像数 1

製品の概要

製品名	Recombinant Human Bile salt-activated lipase protein
タンパク質長	Protein fragment

製品の詳細

由来	Recombinant
由来	Wheat germ
アミノ酸配列	
アクセッション番号	Q86SR3
生物種	Human
配列	GLRGAKTTFDVYTESWAQDPSQENKKKTVVDFETDVLFLVPTEIALAQHR ANAKSAKTYAYLFSHPSRMPVYPKWVGADHADDIQYVFGKPFATPTGYRP
分子量	37 kDa including tags
領域	378 to 477

特性

Our [Abpromise guarantee](#) covers the use of **ab114625** in the following tested applications.

The application notes include recommended starting dilutions; optimal dilutions/concentrations should be determined by the end user.

アプリケーション	ELISA
	SDS-PAGE
	Western blot

製品の状態	Liquid
-------	--------

備考	Protein concentration is above or equal to 0.05 mg/ml. This protein is best used within three months from the date of receipt.
----	---

前処理および保存

保存方法および安定性	Shipped on dry ice. Upon delivery aliquot and store at -80°C. Avoid freeze / thaw cycles. pH: 8.00
------------	---

Constituents: 0.79% Tris HCl, 0.3% Glutathione

関連情報

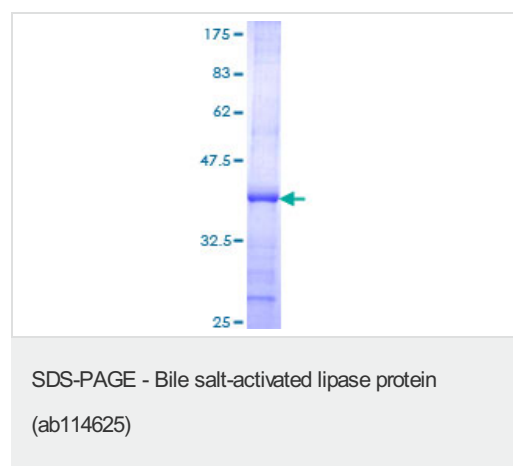
関連性

Defects in Bile salt activated lipase (CEL) are a cause of maturity onset diabetes of the young type 8 with exocrine dysfunction (MODY8) [MIM:609812], also known as diabetes and pancreatic exocrine dysfunction (DPED). MODY [MIM:606391] is an autosomal dominant form of diabetes mellitus. The pancreas serves both endocrine and exocrine functions. The endocrine cells are found in the islets of Langerhans. They synthesize insulin and other hormones, and are involved in the pathogenesis of diabetes mellitus. The exocrine cells produce bicarbonate and digestive enzymes and are involved in the pathogenesis of pancreatic malabsorption. The localization of the islets within exocrine pancreatic tissue is suggestive of an interdependency and cross talk between these two cell populations in their normal and in their abnormal function.

細胞内局在

Cytoplasmic and Nuclear

画像



ab114625 analysed on a 12.5% SDS-PAGE stained with Coomassie Blue.

Please note: All products are "FOR RESEARCH USE ONLY AND ARE NOT INTENDED FOR DIAGNOSTIC OR THERAPEUTIC USE"

Our Abpromise to you: Quality guaranteed and expert technical support

- Replacement or refund for products not performing as stated on the datasheet
- Valid for 12 months from date of delivery
- Response to your inquiry within 24 hours
- We provide support in Chinese, English, French, German, Japanese and Spanish
- Extensive multi-media technical resources to help you
- We investigate all quality concerns to ensure our products perform to the highest standards

If the product does not perform as described on this datasheet, we will offer a refund or replacement. For full details of the Abpromise, please visit <http://www.abcam.co.jp/abpromise> or contact our technical team.

Terms and conditions

- Guarantee only valid for products bought direct from Abcam or one of our authorized distributors