

Product datasheet

Recombinant Human Annexin A11 protein ab101050

画像数 1

製品の概要

製品名	Recombinant Human Annexin A11 protein
タンパク質長	Full length protein

製品の詳細

由来	Recombinant
由来	Escherichia coli

アミノ酸配列

アクセッション番号 [P50995](#)

生物種 Human

配列 **MGSSHHHHHH SSGLVPRGSH MSYPGYPPPP**  
 GGYPPAAPGG GPWGGAAAYPP PPSMPPIGLD  
 NVATYAGQFN QDYLSGMAAN MSGTFGGANM  
 PNLYPGAPGA GYPPVPPGGF GQPPSAQQPV  
 PPYGMYPYPG GNPPSRMPSY PPYPGAPVPG  
 QPMPPPGQQP PGAYPGQPPV TYPGQPPVPL  
 PGQQQPVPY PGYPGSGTVT PAVPPTQFGS  
 RGTITDAPGF DPLRDAEVLK KAMKGFQDE  
 QAIIDCLGSR SNKQRQILL SFKTAYGKDL  
 IKDLKSELSE NFEKTILALM KTPVLFDIYE  
 IKEAIKGVGT DEACLEIEILA SRSNEHIREL  
 NRAYKAEFKK TLEEAIRSDT SGHFQRLNIS  
 LSQGNRDEST NVDMSLAQRD AQELYAAGEN  
 RLGTDESKFN AVLCSRSRAH LVAVFNEYQR  
 MTGRDIEKSI CREMSGDLEE GMLAVVKCLK  
 NTPAFFAERL NKAMRGAGTK DRTLIRIMVS  
 RSETDLLDIR SEYKRMYGKS LYHDISGDTS  
 GDYRKILLKI CGGND

分子量 57 kDa including tags

領域 1 to 505

タグ His tag N-Terminus

特性

Our [Abpromise guarantee](#) covers the use of **ab101050** in the following tested applications.

The application notes include recommended starting dilutions; optimal dilutions/concentrations should be determined by the end user.

<b>アプリケーション</b>	Mass Spectrometry SDS-PAGE
<b>質量分析</b>	MALDI-TOF
<b>精製度</b>	> 95 % SDS-PAGE. ab101050 is purified using conventional chromatography techniques.
<b>製品の状態</b>	Liquid

#### 前処理および保存

---

<b>保存方法および安定性</b>	Shipped at 4°C. Upon delivery aliquot and store at -20°C or -80°C. Avoid repeated freeze / thaw cycles. Preservative: None Constituents: 20% Glycerol, PBS, 2mM DTT, 100mM Sodium chloride
-------------------	--

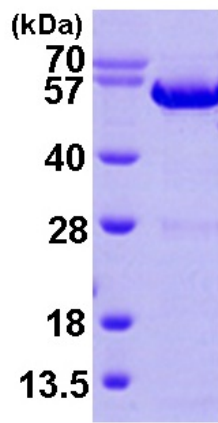
#### 関連情報

---

<b>機能</b>	Binds specifically to calyculin in a calcium-dependent manner (By similarity). Required for midbody formation and completion of the terminal phase of cytokinesis.
<b>配列類似性</b>	Belongs to the annexin family. Contains 4 annexin repeats.
<b>ドメイン</b>	A pair of annexin repeats may form one binding site for calcium and phospholipid.
<b>細胞内局在</b>	Cytoplasm. Melanosome. Nucleus envelope. Nucleus > nucleoplasm. Cytoplasm > cytoskeleton > spindle. Found throughout the nucleoplasm at interphase and during mitosis concentrates around the mitotic apparatus (By similarity). Elevation of intracellular calcium causes relocalization from the nucleoplasm to the nuclear envelope, with little effect on the cytoplasmic pool. Localization to the nuclear envelope is cell-cycle dependent.

#### 画像

---



ab101050 (3  $\mu$ g) on an SDS-PAGE gel (15 %).

SDS-PAGE - Annexin A11 protein (ab101050)

**Please note:** All products are "FOR RESEARCH USE ONLY AND ARE NOT INTENDED FOR DIAGNOSTIC OR THERAPEUTIC USE"

### Our Abpromise to you: Quality guaranteed and expert technical support

- Replacement or refund for products not performing as stated on the datasheet
- Valid for 12 months from date of delivery
- Response to your inquiry within 24 hours
- We provide support in Chinese, English, French, German, Japanese and Spanish
- Extensive multi-media technical resources to help you
- We investigate all quality concerns to ensure our products perform to the highest standards

If the product does not perform as described on this datasheet, we will offer a refund or replacement. For full details of the Abpromise, please visit <http://www.abcam.co.jp/abpromise> or contact our technical team.

### Terms and conditions

- Guarantee only valid for products bought direct from Abcam or one of our authorized distributors