

Product datasheet

Recombinant Human ARL2 protein ab103471

画像数 1

製品の概要

製品名	Recombinant Human ARL2 protein
タンパク質長	Full length protein

製品の詳細

由来	Recombinant
由来	Escherichia coli

アミノ酸配列

アクセッション番号 [P36404](#)

生物種 Human

配列 **MGSSHHHHHSSGLVPRGSHMGLLTILKKMKQKERELRLLMLGLDNAGKT  
TILKKFNGEDIDTISPTLGFNIKTLEHRGFKLNIWDVGGQKSLRSYWRNY  
FESTDGLIWVVDADRQRMQDCQRELQSLLEERLAGATLLIFANKQDLP  
GALSSNAIREALELDSIRSHHWCIQGCSAVTGENLLPGIDWLLDDISSRI  
FTAD**

分子量	23 kDa including tags
領域	1 to 184
タグ	His tag N-Terminus

特性

Our [Abpromise guarantee](#) covers the use of **ab103471** in the following tested applications.

The application notes include recommended starting dilutions; optimal dilutions/concentrations should be determined by the end user.

アプリケーション	SDS-PAGE Mass Spectrometry
質量分析	MALDI-TOF
精製度	> 90 % SDS-PAGE. ab103471 was purified using conventional chromatography.
製品の状態	Liquid

## 保存方法および安定性

Shipped at 4°C. Store at +4°C short term (1-2 weeks). Upon delivery aliquot. Store at -20°C or -80°C. Avoid freeze / thaw cycle.

Preservative: None

Constituents: 40% Glycerol, 20mM Tris HCl, 1mM DTT, 0.1mM PMSF, pH 8.0

## 関連情報

### 機能

Small GTP-binding protein which cycles between an inactive GDP-bound and an active GTP-bound form, and the rate of cycling is regulated by guanine nucleotide exchange factors (GEF) and GTPase-activating proteins (GAP). GTP-binding protein that does not act as an allosteric activator of the cholera toxin catalytic subunit. Regulates formation of new microtubules and centrosome integrity. Prevents the TBCD-induced microtubule destruction. Participates in association with TBCD, in the disassembly of the apical junction complexes. Antagonizes the effect of TBCD on epithelial cell detachment and tight and adherens junctions disassembly. Together with ARL2, plays a role in the nuclear translocation, retention and transcriptional activity of STAT3. Component of a regulated secretory pathway involved in Ca(2+)-dependent release of acetylcholine. Required for normal progress through the cell cycle.

### 配列類似性

Belongs to the small GTPase superfamily. Arf family.

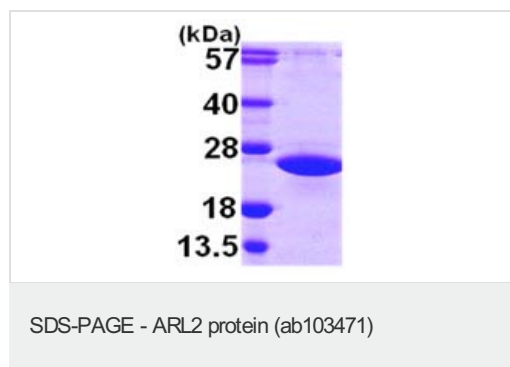
### 翻訳後修飾

Not N-myristoylated.

### 細胞内局在

Mitochondrion intermembrane space. Cytoplasm > cytoskeleton > centrosome. Nucleus. Cytoplasm. The complex formed with ARL2BP, ARL2 and SLC25A6 is expressed in mitochondria. The complex formed with ARL2BP, ARL2 and SLC25A4 is expressed in mitochondria (By similarity). Not detected in the Golgi, nucleus and on the mitotic spindle. Centrosome-associated throughout the cell cycle. Not detected to interphase microtubules.

## 画像



15% SDS-PAGE analysis of 3µg ab103471.

**Please note:** All products are "FOR RESEARCH USE ONLY AND ARE NOT INTENDED FOR DIAGNOSTIC OR THERAPEUTIC USE"

## Our Abpromise to you: Quality guaranteed and expert technical support

- Replacement or refund for products not performing as stated on the datasheet
- Valid for 12 months from date of delivery
- Response to your inquiry within 24 hours

- We provide support in Chinese, English, French, German, Japanese and Spanish
- Extensive multi-media technical resources to help you
- We investigate all quality concerns to ensure our products perform to the highest standards

If the product does not perform as described on this datasheet, we will offer a refund or replacement. For full details of the Abpromise, please visit <http://www.abcam.co.jp/abpromise> or contact our technical team.

### **Terms and conditions**

---

- Guarantee only valid for products bought direct from Abcam or one of our authorized distributors