

## Product datasheet

# Recombinant Human AFM protein ab114886

### 画像数 1

#### 製品の概要

製品名	Recombinant Human AFM protein
タンパク質長	Full length protein

#### 製品の詳細

由来	Recombinant
由来	Wheat germ

#### アミノ酸配列

アクセッション番号 [P43652](#)

生物種 Human

配列  
 MKLLKLTGFIFLFFLTESTLPTQPRDIENFNSTQKFIEDNIEYITIIA  
 FAQYVQEATF  
 EEMEKLVKDMVEYKDRCMADKTLPECSKLPNNVLQEKI  
 CAMEGLPQKHNFHSHCCSKVDAQ  
 RRLCFFYNKKSVDGFLPPFPTLDPEE  
 KCQAYESNRESLLNHFLYEVARRNPFVFAPTLT  
 VAVHFEEVAKSCCE  
 EQNKVNCLQTRAIPVTQYLKAFSSYQKHVCGALLKFGTKVVFHFIYI  
 AI  
 LSQKFPKIEFKELISLVEDVSSNYDGCCEGDVVQCIRDTSKVMNHICKQ  
 DSISSKIK  
 ECCEKKIPERGQCIINSNKDDRPKDLSLREGKFTDSENV  
 QERDADPDTFFAKFTFEYSR  
 RHPDLSIPELLRIVQIYKDLLRNCCNTE  
 NPPGCYRYAEDKFNETTEKSLKMQVECKHFQ  
 NLGKDGLKYHYLIRLT  
 KIAPQLSTEELVSLGEKMTAFTTCCTLSEEFACVDNLADLVFG  
 ELCG  
 VNENRTINPAVDHCCKTNFAFRRPCFESLKADKTYVPPFSQLFTFHAD  
 MCQSQN  
 EELQRKTDRFLVNLVCLKHELTDEELQSLFTNFANVVDKCKC  
 AESPEVCFNEESPKIGN

分子量 96 kDa including tags

領域 1 to 599

## 特性

---

Our [Abpromise guarantee](#) covers the use of **ab114886** in the following tested applications.

The application notes include recommended starting dilutions; optimal dilutions/concentrations should be determined by the end user.

### アプリケーション

ELISA  
SDS-PAGE  
Western blot

### 製品の状態

Liquid

### 備考

Protein concentration is above or equal to 0.05 mg/ml.  
Best use within three months from the date of receipt of this protein.

## 前処理および保存

---

### 保存方法および安定性

Shipped on dry ice. Upon delivery aliquot and store at -80°C. Avoid freeze / thaw cycles.  
pH: 8.00  
Constituents: 0.3% Glutathione, 0.79% Tris HCl

## 関連情報

---

### 機能

Vitamin E binding protein. May transport vitamin E in body fluids under conditions where the lipoprotein system is not sufficient or across the blood-brain barrier.

### 配列類似性

Belongs to the ALB/AFP/VDB family.  
Contains 3 albumin domains.

### 翻訳後修飾

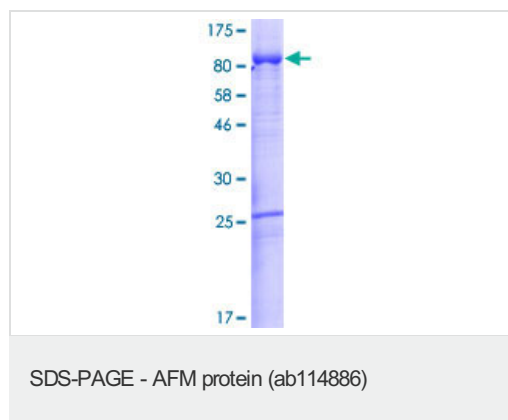
N-glycosylated.

### 細胞内局在

Secreted.

## 画像

---



12.5% SDS-PAGE showing ab114886 at approximately 96.10kDa.  
Stained with Coomassie Blue.

**Please note:** All products are "FOR RESEARCH USE ONLY AND ARE NOT INTENDED FOR DIAGNOSTIC OR THERAPEUTIC USE"

## **Our Abpromise to you: Quality guaranteed and expert technical support**

---

- Replacement or refund for products not performing as stated on the datasheet
- Valid for 12 months from date of delivery
- Response to your inquiry within 24 hours
  
- We provide support in Chinese, English, French, German, Japanese and Spanish
- Extensive multi-media technical resources to help you
- We investigate all quality concerns to ensure our products perform to the highest standards

If the product does not perform as described on this datasheet, we will offer a refund or replacement. For full details of the Abpromise, please visit <http://www.abcam.co.jp/abpromise> or contact our technical team.

## **Terms and conditions**

---

- Guarantee only valid for products bought direct from Abcam or one of our authorized distributors