

Product datasheet

Recombinant Human ACSL1 protein ab116839

画像数 1

製品の概要

製品名	Recombinant Human ACSL1 protein
タンパク質長	Protein fragment

製品の詳細

由来	Recombinant
由来	Wheat germ
アミノ酸配列	
アクセッション番号	P33121
生物種	Human
配列	PKPLKPPCDLSMQSVEVAGSGGARRSALLDSDEPLVYFYDDVTTLYEGFQ RGIQVSNNGPCLGSRKPDQPYEWLSYKQVAELSECIGSALIQKGFKA
分子量	36 kDa including tags
領域	48 to 145

特性

Our [Abpromise guarantee](#) covers the use of **ab116839** in the following tested applications.

The application notes include recommended starting dilutions; optimal dilutions/concentrations should be determined by the end user.

アプリケーション	ELISA SDS-PAGE Western blot
製品の状態	Liquid
備考	Protein concentration is above or equal to 0.05 mg/ml. Best use within three months from the date of receipt of this protein.

前処理および保存

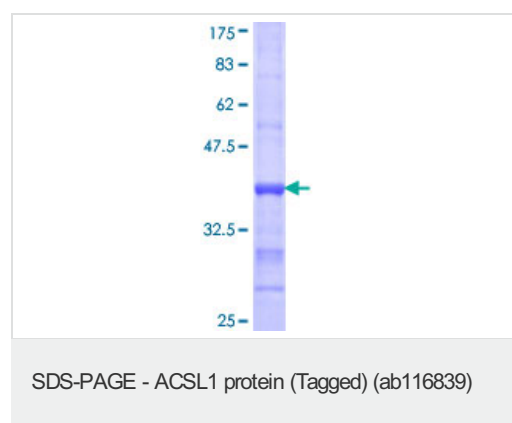
保存方法および安定性	Shipped on dry ice. Upon delivery aliquot and store at -80°C. Avoid freeze / thaw cycles. pH: 8.00
------------	-------------------------------------------------------------------------------------------------------

Constituents: 0.3% Glutathione, 0.79% Tris HCl

関連情報

機能	Activation of long-chain fatty acids for both synthesis of cellular lipids, and degradation via beta-oxidation. Preferentially uses palmitoleate, oleate and linoleate.
組織特異性	Highly expressed in liver, heart, skeletal muscle, kidney and erythroid cells, and to a lesser extent in brain, lung, placenta and pancreas.
配列類似性	Belongs to the ATP-dependent AMP-binding enzyme family.
発生段階	Expressed during the early stages of erythroid development while expression is very low in reticulocytes and young erythrocytes.
細胞内局在	Mitochondrion outer membrane. Peroxisome membrane. Microsome membrane. Endoplasmic reticulum membrane.

画像



12.5% SDS-PAGE stained with Coomassie
Blue showing ab116839 at approximately
36.41 kDa.

Please note: All products are "FOR RESEARCH USE ONLY AND ARE NOT INTENDED FOR DIAGNOSTIC OR THERAPEUTIC USE"

Our Abpromise to you: Quality guaranteed and expert technical support

- Replacement or refund for products not performing as stated on the datasheet
- Valid for 12 months from date of delivery
- Response to your inquiry within 24 hours
- We provide support in Chinese, English, French, German, Japanese and Spanish
- Extensive multi-media technical resources to help you
- We investigate all quality concerns to ensure our products perform to the highest standards

If the product does not perform as described on this datasheet, we will offer a refund or replacement. For full details of the Abpromise, please visit <http://www.abcam.co.jp/abpromise> or contact our technical team.

Terms and conditions

- Guarantee only valid for products bought direct from Abcam or one of our authorized distributors