

## Product datasheet

# Rad51 overexpression 293T lysate (whole cell) ab94044

画像数 2

### 製品の概要

製品名	Rad51 overexpression 293T lysate (whole cell)
製品の詳細	Rad51 overexpression lysate
特記事項	ab94044 is a 293T cell transfected lysate in which Human Rad51 has been transiently over-expressed using a pCMV-Rad51 plasmid. The lysate is provided in 1X Sample Buffer. <b>Note:</b> For more detailed how the transfected lysate was prepared <a href="#">view preparation notes</a>
アプリケーション	適用あり: WB

### 法規制情報

医薬用外劇物

### 製品の特性

製品の状態	Liquid
保存方法	Shipped on dry ice. Upon delivery aliquot and store at -20°C. Avoid freeze / thaw cycles.
バッファー	pH: 6.80 Constituent: 100% 1x Sample Buffer
精製度	Whole Cell Lysate
背景	Disease: Breast cancer Mirror movements 2 Defects in RAD51 are found in a patient with microcephaly, mental retardation without bone marrow failure and pediatric cancers. Domain: The nuclear localization may reside in the C-terminus (between 259 and 339 AA). Function: Plays an important role in homologous strand exchange, a key step in DNA repair through homologous recombination. Binds to single and double-stranded DNA and exhibits DNA-dependent ATPase activity. Catalyzes the recognition of homology and strand exchange between homologous DNA partners to form a joint molecule between a processed DNA break and the repair template. Binds to single-stranded DNA in an ATP-dependent manner to form nucleoprotein filaments which are essential for the homology search and strand exchange (PubMed:26681308). Part of a PALB2-scaffolded HR complex containing BRCA2 and RAD51C and which is thought to play a role in DNA repair by HR. Plays a role in regulating mitochondrial DNA copy number under conditions of oxidative stress in the presence of RAD51C and XRCC3. PTM: Ubiquitinated by the SCF(FBXO18) E3 ubiquitin ligase complex, regulating RAD51 subcellular location and preventing its association with DNA. Phosphorylated. Phosphorylation of Thr-309 by CHEK1 may enhance association with chromatin at sites of DNA

damage and promote DNA repair by homologous recombination. Phosphorylation by ABL1 inhibits function. Similarity: Belongs to the RecA family. RAD51 subfamily. Contains 1 HhH domain. Tissue specificity: Highly expressed in testis and thymus, followed by small intestine, placenta, colon, pancreas and ovary. Weakly expressed in breast.

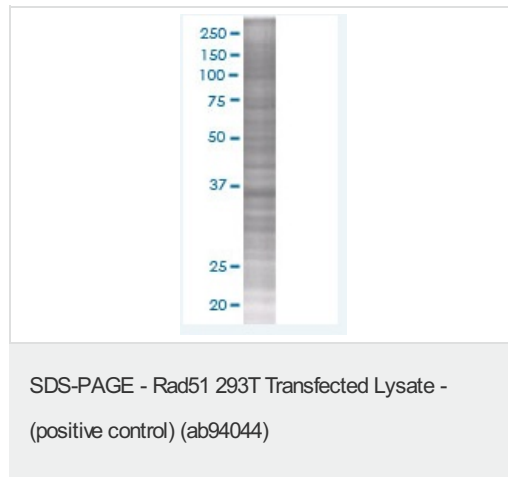
## アプリケーション

Our [Abpromise guarantee](#) covers the use of **ab94044** in the following tested applications.

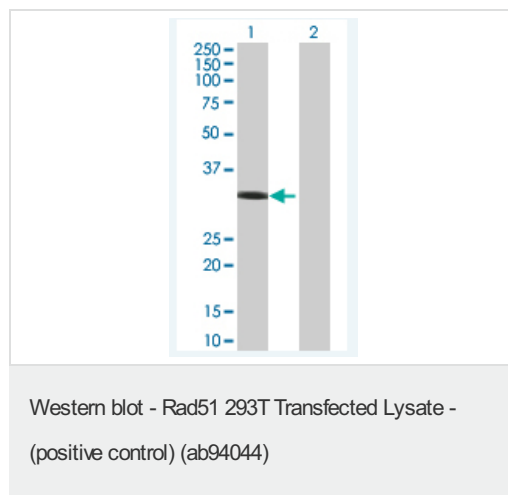
The application notes include recommended starting dilutions; optimal dilutions/concentrations should be determined by the end user.

アプリケーション	Abreviews	特記事項
WB		Use at an assay dependent dilution.

## 画像



ab94044 at 15µg/lane on an SDS-PAGE gel.



**All lanes** : Anti-Rad51 antibody ([ab88572](#)) at  
1/500 dilution

**Lane 1** : ab94044

**Lane 2** : non transfected lysate

Lysates/proteins at 25 µg per lane.

### Secondary

**All lanes** : non-Abcam, Goat Anti-mouse IgG  
(H and L) HRP conjugated at 1/2500 dilution

**Please note:** All products are "FOR RESEARCH USE ONLY AND ARE NOT INTENDED FOR DIAGNOSTIC OR THERAPEUTIC USE"

**Our Abpromise to you: Quality guaranteed and expert technical support**

- Replacement or refund for products not performing as stated on the datasheet
- Valid for 12 months from date of delivery
- Response to your inquiry within 24 hours
  
- We provide support in Chinese, English, French, German, Japanese and Spanish
- Extensive multi-media technical resources to help you
- We investigate all quality concerns to ensure our products perform to the highest standards

If the product does not perform as described on this datasheet, we will offer a refund or replacement. For full details of the Abpromise, please visit <http://www.abcam.co.jp/abpromise> or contact our technical team.

### **Terms and conditions**

---

- Guarantee only valid for products bought direct from Abcam or one of our authorized distributors