

Product datasheet

Anti-RRM1 antibody ab81085

9 References [画像数 4](#)

製品の概要

製品名	Anti-RRM1 antibody
製品の詳細	Rabbit polyclonal to RRM1
由来種	Rabbit
アプリケーション	適用あり: WB, ICC, IP, IHC-P
種交差性	交差種: Human
免疫原	Synthetic peptide derived from the C-terminus of human RRM1.
ポジティブ・コントロール	Human placenta.

製品の特性

製品の状態	Liquid
保存方法	Shipped at 4°C. Upon delivery aliquot and store at -20°C. Avoid freeze / thaw cycles.
バッファー	Preservative: 0.1% Sodium Azide Constituents: 1% BSA, 10mM PBS, pH 7.4
精製度	Protein A purified
ポリ/モノ	ポリクローナル
アイソタイプ	IgG

アプリケーション

Our [Abpromise guarantee](#) covers the use of **ab81085** in the following tested applications.

The application notes include recommended starting dilutions; optimal dilutions/concentrations should be determined by the end user.

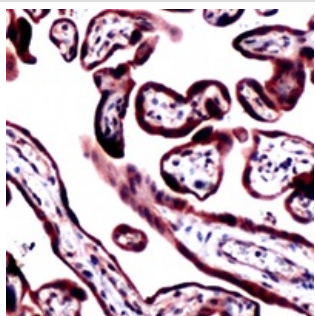
アプリケーション	Abreviews	特記事項
WB		Use a concentration of 1 µg/ml. Detects a band of approximately 90 kDa (predicted molecular weight: 90 kDa).
ICC		Use at an assay dependent concentration. PubMed: 23840376

アプリケーション	Abreviews	特記事項
IP		Use at an assay dependent concentration.
IHC-P		1/100.

ターゲット情報

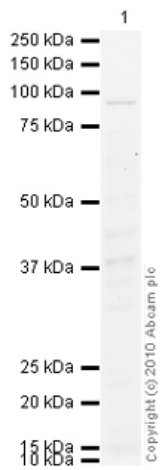
機能	Provides the precursors necessary for DNA synthesis. Catalyzes the biosynthesis of deoxyribonucleotides from the corresponding ribonucleotides.
パスウェイ	Genetic information processing; DNA replication.
配列類似性	Belongs to the ribonucleoside diphosphate reductase large chain family. Contains 1 ATP-cone domain.
細胞内局在	Cytoplasm.

画像



ab81085, at 1/100 dilution, staining RRM1 in Human Placenta by Immunohistochemistry using formalin-fixed paraffin-embedded tissue.

Immunohistochemistry (Formalin/PFA-fixed paraffin-embedded sections) - Anti-RRM1 antibody (ab81085)



Western blot - Anti-RRM1 antibody (ab81085)

Anti-RRM1 antibody (ab81085) at 1/500 dilution + HeLa (Human epithelial carcinoma cell line) Whole Cell Lysate at 10 μ g

Secondary

Goat Anti-Rabbit IgG H&L (HRP) preadsorbed ([ab97080](#)) at 1/5000 dilution

Developed using the ECL technique.

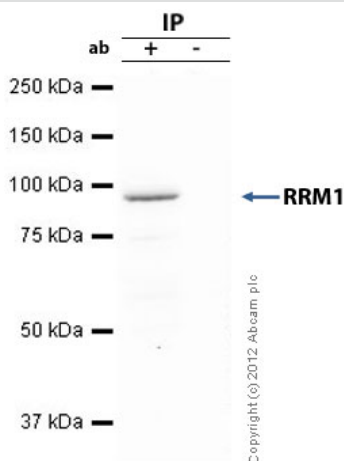
Performed under reducing conditions.

Predicted band size: 90 kDa

Observed band size: 90 kDa

Additional bands at: 38 kDa. We are unsure as to the identity of these extra bands.

Exposure time: 20 minutes



Immunoprecipitation - Anti-RRM1 antibody (ab81085)

RRM1 was immunoprecipitated using 0.5mg Hela whole cell extract, 5 μ g of Rabbit polyclonal to RRM1 and 50 μ l of protein G magnetic beads (+). No antibody was added to the control (-).

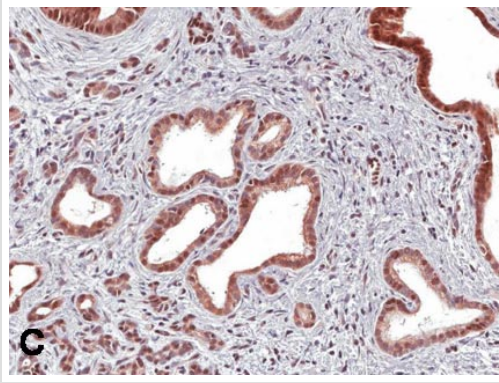
The antibody was incubated under agitation with Protein G beads for 10min, Hela whole cell extract lysate diluted in RIPA buffer was added to each sample and incubated for a further 10min under agitation.

Proteins were eluted by addition of 40 μ l SDS loading buffer and incubated for 10min at 70 $^{\circ}$ C; 10 μ l of each sample was separated on a SDS PAGE gel, transferred to a nitrocellulose membrane, blocked with 5% BSA and probed with ab81085.

Secondary: Mouse monoclonal [SB62a]

Secondary Antibody to Rabbit IgG light chain (HRP) ([ab99697](#)).

Band: Band: 90kDa: RRM1.



Immunohistochemical analysis of Human pancreatic ductal adenocarcinoma tissue, staining RRM1 with ab81085 at 1/50 dilution.

Immunohistochemistry (Formalin/PFA-fixed paraffin-embedded sections) - Anti-RRM1 antibody (ab81085)

Image from Valsecchi ME et al., BMC Cancer. 2012 Mar 22;12:104. Fig 1.; doi:10.1186/1471-2407-12-104; 22 March 2012, BMC Cancer 2012, 12:104

Please note: All products are "FOR RESEARCH USE ONLY AND ARE NOT INTENDED FOR DIAGNOSTIC OR THERAPEUTIC USE"

Our Abpromise to you: Quality guaranteed and expert technical support

- Replacement or refund for products not performing as stated on the datasheet
- Valid for 12 months from date of delivery
- Response to your inquiry within 24 hours
- We provide support in Chinese, English, French, German, Japanese and Spanish
- Extensive multi-media technical resources to help you
- We investigate all quality concerns to ensure our products perform to the highest standards

If the product does not perform as described on this datasheet, we will offer a refund or replacement. For full details of the Abpromise, please visit <http://www.abcam.co.jp/abpromise> or contact our technical team.

Terms and conditions

- Guarantee only valid for products bought direct from Abcam or one of our authorized distributors