


Product datasheet

Anti-RP2 antibody ab98353

画像数 2

製品の概要

製品名	Anti-RP2 antibody
製品の詳細	Rabbit polyclonal to RP2
アプリケーション	<b>適用あり:</b> IHC-P, WB
種交差性	交差種: Human 交差が予測される動物種: Mouse, Rat, Rabbit, Horse, Guinea pig, Cow, Cat, Dog 
免疫原	Synthetic peptide corresponding to a region within internal amino acids 300-349 of Human RP2 (NP_008846). <a href="#">Run BLAST with ExPASy</a> <a href="#">Run BLAST with NCBI</a>
ポジティブ・コントロール	human Fetal muscle lysate

製品の特性

製品の状態	Liquid
保存方法	Shipped at 4°C. Upon delivery aliquot and store at -20°C. Avoid repeated freeze / thaw cycles.
バッファー	Preservative: None Constituents: 2% Sucrose, PBS
精製度	Immunogen affinity purified
ポリ/モノ	ポリクローナル
アイソタイプ	IgG

アプリケーション

Our [Abpromise guarantee](#) covers the use of **ab98353** in the following tested applications.

The application notes include recommended starting dilutions; optimal dilutions/concentrations should be determined by the end user.

アプリケーション	Abreviews	特記事項
IHC-P		Use a concentration of 5 µg/ml.
WB		Use a concentration of 1 µg/ml. Predicted molecular weight: 40 kDa. Good results were obtained when blocked with 5% non-fat dry milk in 0.05% PBS-T.

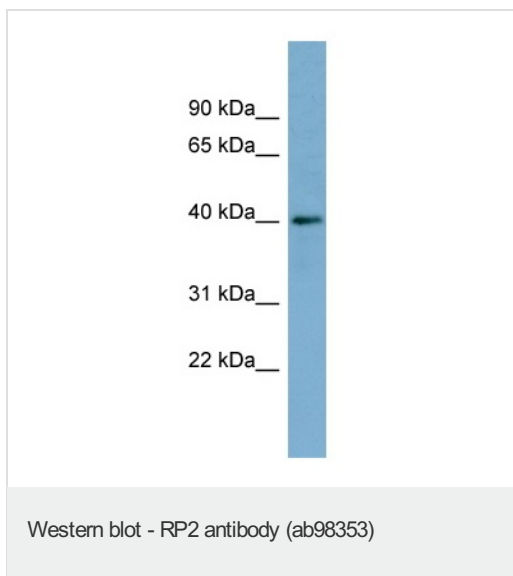
関連性

Function: Acts as a GTPase-activating protein (GAP) involved in trafficking between the Golgi and the ciliary membrane. Involved in localization of proteins, such as NPHP3, to the cilium membrane by inducing hydrolysis of GTP ARL3, leading to the release of UNC119 (or UNC119B). Acts as a GTPase-activating protein (GAP) for tubulin in concert with tubulin-specific chaperone C, but does not enhance tubulin heterodimerization. Acts as guanine nucleotide dissociation inhibitor towards ADP-ribosylation factor-like proteins. Tissue specificity: Ubiquitous. Expressed in the rod and cone photoreceptors, extending from the tips of the outer segment (OS) through the inner segment (IS) and outer nuclear layer (ONL) and into the synaptic terminals of the outer plexiform layer (ONL). Also detected in the bipolar, horizontal and amacrine cells in the inner nuclear layer (INL), extending to the inner plexiform layer (IPL) and through the ganglion cell layer (GCL) and into the nerve fiber layer (NFL) (at protein level). Disease: Retinitis pigmentosa 2 Similarity: Belongs to the TBCC family. Contains 1 C-CAP/cofactor C-like domain. PTM: Myristoylated on Gly-2; which may be required for membrane targeting. Palmitoylated on Cys-3; which may be required for plasma membrane targeting (Probable). Mutation of Cys-3 targets the protein to internal membranes.

細胞内局在

Cell membrane; Lipid-anchor; Cytoplasmic side

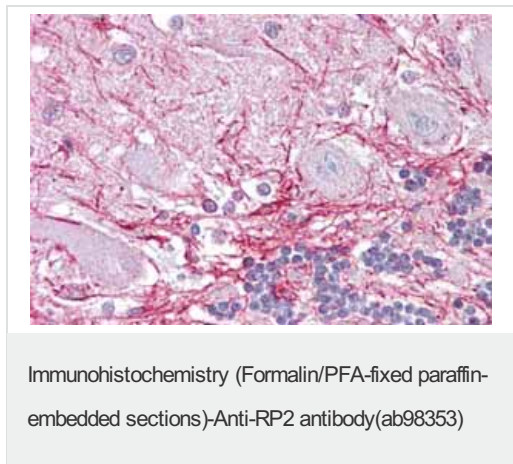
Anti-RP2 antibody 画像



Anti-RP2 antibody (ab98353) at 1 µg/ml +  
Human fetal muscle lysate at 10 µg

**Predicted band size** : 40 kDa

Gel concentration: 12%



Immunohistochemistry (Formalin/PFA-fixed paraffin-embedded sections) analysis of human brain, cerebellum tissue labelling RP2 with ab98353 at 5µg/ml.

**Please note:** All products are "FOR RESEARCH USE ONLY AND ARE NOT INTENDED FOR DIAGNOSTIC OR THERAPEUTIC USE"

**Our Abpromise to you: Quality guaranteed and expert technical support**

- Replacement or refund for products not performing as stated on the datasheet
- Valid for 12 months from date of delivery
- Response to your inquiry within 24 hours
  
- We provide support in Chinese, English, French, German, Japanese and Spanish
- Extensive multi-media technical resources to help you
- We investigate all quality concerns to ensure our products perform to the highest standards

If the product does not perform as described on this datasheet, we will offer a refund or replacement. For full details of the Abpromise, please visit <http://www.abcam.co.jp/abpromise> or contact our technical team.

### **Terms and conditions**

---

- Guarantee only valid for products bought direct from Abcam or one of our authorized distributors