

Product datasheet

Anti-RIC3 antibody ab112911

1 References [画像数 1](#)

製品の概要

製品名	Anti-RIC3 antibody
製品の詳細	Rabbit polyclonal to RIC3
由来種	Rabbit
アプリケーション	適用あり: WB
種交差性	交差種: Human
免疫原	Synthetic peptide conjugated to KLH, corresponding to a region within C terminal amino acids 319-348 of Human RIC3 (NP_001128581.1 , NP_078833.3)
ポジティブ・コントロール	NCI-H292 Cell Lysate

製品の特性

製品の状態	Liquid
保存方法	Shipped at 4°C. Store at 4°C (up to 6 months). Store at -20°C long term.
バッファー	Preservative: 0.09% Sodium azide Constituent: 99% PBS
精製度	Immunogen affinity purified
特記事項 (精製)	ab112911 was purified through a protein A column, followed by peptide affinity purification.
ポリ/モノ	ポリクローナル
アイソタイプ	IgG

アプリケーション

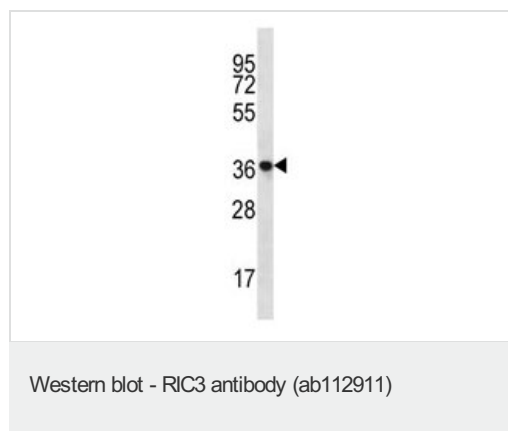
Our [Abpromise guarantee](#) covers the use of **ab112911** in the following tested applications.

The application notes include recommended starting dilutions; optimal dilutions/concentrations should be determined by the end user.

アプリケーション	Abreviews	特記事項
WB		1/100 - 1/500. Predicted molecular weight: 41 kDa.

機能	Promotes functional expression of homomeric alpha-7 and alpha-8 nicotinic acetylcholine receptors at the cell surface. May also promote functional expression of homomeric serotonergic 5-HT3 receptors, and of heteromeric acetylcholine receptors alpha-3/beta-2, alpha-3/beta-4, alpha-4/beta-2 and alpha-4/beta-4.
組織特異性	Broadly expressed, with high levels in muscle, brain and heart. Over-expressed in brains from patients with bipolar disease or schizophrenia.
配列類似性	Belongs to the ric-3 family.
細胞内局在	Endoplasmic reticulum membrane and Endoplasmic reticulum membrane. Golgi apparatus membrane.

画像



Anti-RIC3 antibody (ab112911) at 1/100 dilution + NCI-H292 Cell Lysate at 35 µg

Predicted band size: 41 kDa

Please note: All products are "FOR RESEARCH USE ONLY AND ARE NOT INTENDED FOR DIAGNOSTIC OR THERAPEUTIC USE"

Our Abpromise to you: Quality guaranteed and expert technical support

- Replacement or refund for products not performing as stated on the datasheet
- Valid for 12 months from date of delivery
- Response to your inquiry within 24 hours
- We provide support in Chinese, English, French, German, Japanese and Spanish
- Extensive multi-media technical resources to help you
- We investigate all quality concerns to ensure our products perform to the highest standards

If the product does not perform as described on this datasheet, we will offer a refund or replacement. For full details of the Abpromise, please visit <http://www.abcam.co.jp/abpromise> or contact our technical team.

Terms and conditions

- Guarantee only valid for products bought direct from Abcam or one of our authorized distributors