

Product datasheet

Anti-RFP antibody ab62341

★★★★☆ 20 Abreviews 101 References 画像数 4

製品の概要

製品名	Anti-RFP antibody
製品の詳細	Rabbit polyclonal to RFP
由来種	Rabbit
特異性	ab62341 recognizes RFP and has been shown to react with tdTomato.
アプリケーション	適用あり: IHC-P, IHC-FrFI, IHC-Fr, WB, IP, ICC/IF
免疫原	Recombinant full length protein corresponding to RFP.

法規制情報

医薬用外毒物

製品の特性

製品の状態	Liquid
保存方法	Shipped at 4°C. Upon delivery aliquot and store at -20°C. Avoid freeze / thaw cycles.
バッファー	Preservative: 0.01% Thimerosal (merthiolate) Constituents: 30% Glycerol, 0.5% BSA, PBS, pH 7.2
精製度	Immunogen affinity purified
ポリ/モノ	ポリクローナル
アイソタイプ	IgG

アプリケーション

Our [Abpromise guarantee](#) covers the use of **ab62341** in the following tested applications.

The application notes include recommended starting dilutions; optimal dilutions/concentrations should be determined by the end user.

アプリケーション	Abreviews	特記事項
IHC-P	★★★★★	Use at an assay dependent concentration. PubMed: 23300543

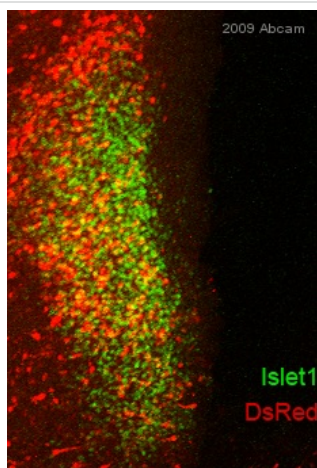
アプリケーション	Abreviews	特記事項
IHC-FrFI		Use at an assay dependent concentration. PubMed: 27581371
IHC-Fr	★★★★☆	Use at an assay dependent concentration. PubMed: 20889618
WB	★★★★☆	Use a concentration of 0.5 - 4 µg/ml. Detects a band of approximately 35 kDa (predicted molecular weight: 35 kDa).
IP		Use a concentration of 10 - 20 µg/ml. PubMed: 19704022
ICC/IF	★★★★★	1/100. PubMed: 19474334

ターゲット情報

関連性

Fluorescent proteins have become a useful and ubiquitous tool for making chimeric proteins, where they function as a fluorescent protein tag. Typically they tolerate N- and C-terminal fusion to a broad variety of proteins. They have been expressed in most known cell types and are used as a noninvasive fluorescent marker in living cells and organisms. They enable a wide range of applications where they have functioned as a cell lineage tracer, reporter of gene expression, or as a measure of protein-protein interactions.

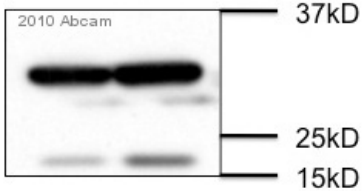
画像



ab62341, at 1/100, staining chicken midbrain cells by Immunocytochemistry/ Immunofluorescence. The cells were paraformaldehyde fixed and blocked with 10% serum prior to incubation with the antibody for 3 hours. An Alexa fluor® 568 goat polyclonal to rabbit Ig, diluted 1/300, was used as the secondary antibody.

Immunocytochemistry/ Immunofluorescence - Anti-RFP antibody (ab62341)

This image is courtesy of an anonymous Abreview.



Western blot - Anti-RFP antibody (ab62341)

Image courtesy of an anonymous Abreview.

All lanes : Anti-RFP antibody (ab62341) at 1/2000 dilution

All lanes : Whole cell lysate prepared from pDsRed-Monomer transfected HEK293 cells

Lysates/proteins at 20 µg per lane.

Secondary

All lanes : HRP conjugated anti-rabbit at 1/5000 dilution

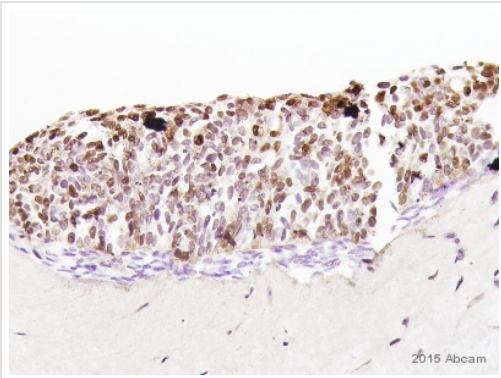
Developed using the ECL technique.

Predicted band size: 35 kDa

Observed band size: 35 kDa

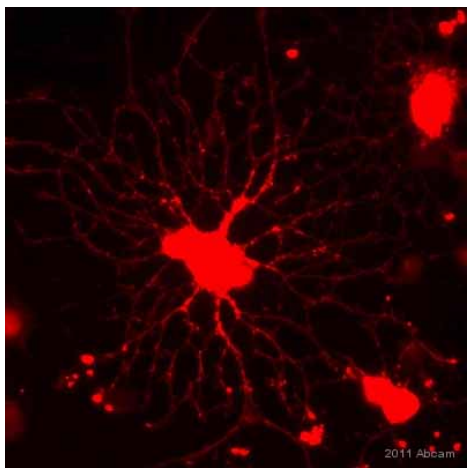
Additional bands at: 15 kDa. We are unsure as to the identity of these extra bands.

Exposure time: 30 seconds



Immunohistochemistry (Formalin/PFA-fixed paraffin-embedded sections) - Anti-RFP antibody (ab62341)

Immunohistochemical analysis of paraffin-embedded HT29 cells tissue labeling RFP with ab62341 at 1400 dilution, followed by Goat Anti-Rabbit (HRP) (ab62341)



Immunocytochemistry/ Immunofluorescence - Anti-RFP antibody (ab62341)

Image courtesy of an anonymous Abreview.

ab62341 staining RFP in rat oligodendrocytes transfected with recombinant human adenovirus type 5 expressing Red Fluorescent Protein (RFP) by Immunocytochemistry/ Immunofluorescence.

Cells were fixed with formaldehyde, permeabilized using 0.3% Triton X-100, then blocked with 5% serum for 10 minutes at 25°C. Samples were then incubated with ab62341 at a 1/300 dilution for 1 hour at 25°C. The secondary used was an Alexa Fluor® 594 goat anti-rabbit IgG (H+L), used at a 1/500 dilution.

Please note: All products are "FOR RESEARCH USE ONLY AND ARE NOT INTENDED FOR DIAGNOSTIC OR THERAPEUTIC USE"

Our Abpromise to you: Quality guaranteed and expert technical support

- Replacement or refund for products not performing as stated on the datasheet
- Valid for 12 months from date of delivery
- Response to your inquiry within 24 hours
- We provide support in Chinese, English, French, German, Japanese and Spanish
- Extensive multi-media technical resources to help you
- We investigate all quality concerns to ensure our products perform to the highest standards

If the product does not perform as described on this datasheet, we will offer a refund or replacement. For full details of the Abpromise, please visit <http://www.abcam.co.jp/abpromise> or contact our technical team.

Terms and conditions

- Guarantee only valid for products bought direct from Abcam or one of our authorized distributors