

Product datasheet

Anti-RFC2 antibody - N-terminal ab80104

画像数 1

製品の概要

製品名	Anti-RFC2 antibody - N-terminal
製品の詳細	Rabbit polyclonal to RFC2 - N-terminal
由来種	Rabbit
アプリケーション	適用あり: ELISA, WB
種交差性	交差種: Human
免疫原	Synthetic peptide from the N-terminal of Human RFC2, conjugated to KLH
ポジティブ・コントロール	K562 cell line lysates.

製品の特性

製品の状態	Liquid
保存方法	Shipped at 4°C. Upon delivery aliquot and store at -20°C or -80°C. Avoid repeated freeze / thaw cycles.
バッファー	Preservative: 0.09% Sodium Azide Constituents: PBS
精製度	Ammonium Sulphate Precipitation
特記事項(精製)	Purified by Saturated Ammonium Sulfate (SAS) precipitation followed by dialysis against PBS.
ポリモノ	ポリクローナル
アイソタイプ	IgG

アプリケーション

Our [Abpromise guarantee](#) covers the use of **ab80104** in the following tested applications.

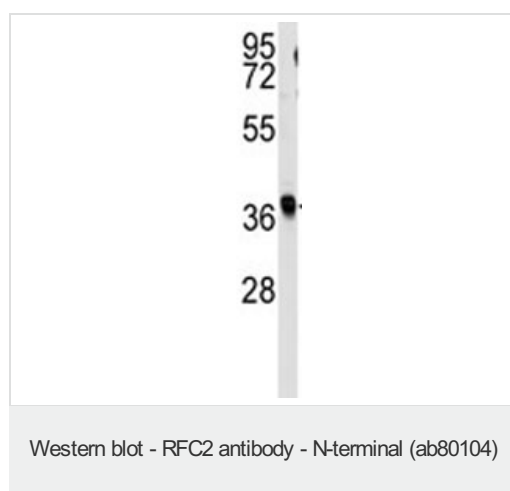
The application notes include recommended starting dilutions; optimal dilutions/concentrations should be determined by the end user.

アプリケーション	Abreviews	特記事項
ELISA		1/1000.
WB		1/50 - 1/100. Detects a band of approximately 40 kDa (predicted molecular weight: 40 kDa).

ターゲット情報

機能	The elongation of primed DNA templates by DNA polymerase delta and epsilon requires the action of the accessory proteins proliferating cell nuclear antigen (PCNA) and activator 1. This subunit binds ATP.
関連疾患	Note=RFC2 is located in the Williams-Beuren syndrome (WBS) critical region. WBS results from a hemizygous deletion of several genes on chromosome 7q11.23, thought to arise as a consequence of unequal crossing over between highly homologous low-copy repeat sequences flanking the deleted region.
配列類似性	Belongs to the activator 1 small subunits family.
細胞内局在	Nucleus.

画像



Anti-RFC2 antibody - N-terminal (ab80104) at
1/50 dilution + K562 cell line lysates at 35 µg

Predicted band size: 40 kDa

Observed band size: 40 kDa

Please note: All products are "FOR RESEARCH USE ONLY AND ARE NOT INTENDED FOR DIAGNOSTIC OR THERAPEUTIC USE"

Our Abpromise to you: Quality guaranteed and expert technical support

- Replacement or refund for products not performing as stated on the datasheet
- Valid for 12 months from date of delivery
- Response to your inquiry within 24 hours
- We provide support in Chinese, English, French, German, Japanese and Spanish
- Extensive multi-media technical resources to help you
- We investigate all quality concerns to ensure our products perform to the highest standards

If the product does not perform as described on this datasheet, we will offer a refund or replacement. For full details of the Abpromise, please visit <http://www.abcam.co.jp/abpromise> or contact our technical team.

Terms and conditions

- Guarantee only valid for products bought direct from Abcam or one of our authorized distributors