

Product datasheet

Anti-RFC1 antibody ab3853

3 References [画像数 1](#)

製品の概要

製品名	Anti-RFC1 antibody
製品の詳細	Rabbit polyclonal to RFC1
由来種	Rabbit
アプリケーション	適用あり: IP, WB
種交差性	交差種: Human 交差が予測される動物種: Mouse, Chimpanzee, Gorilla
免疫原	Synthetic peptide (Human) - which represents a portion of human Replication Factor C 1, 140 kDa subunit encoded in part by exons 25 and 26.
ポジティブ・コントロール	Nuclear extract from HeLa cells.

製品の特性

製品の状態	Liquid
保存方法	Shipped at 4°C. Upon delivery aliquot and store at -20°C. Avoid freeze / thaw cycles.
バッファー	Preservative: 0.1% Sodium Azide Constituents: 8mM PBS, 60mM Citrate, 150mM Tris, pH 7-8
精製度	Immunogen affinity purified
ポリ/モノ	ポリクローナル
アイソタイプ	IgG

アプリケーション

Our [Abpromise guarantee](#) covers the use of **ab3853** in the following tested applications.

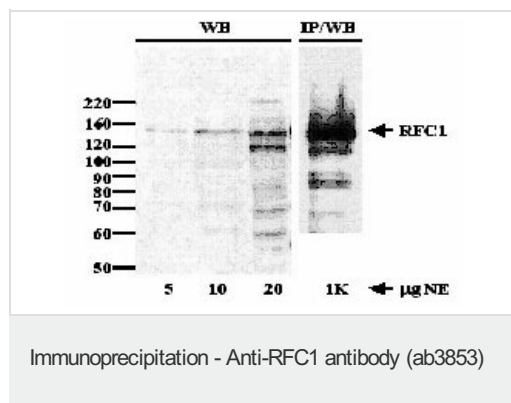
The application notes include recommended starting dilutions; optimal dilutions/concentrations should be determined by the end user.

アプリケーション	Abreviews	特記事項
IP		Use at 2 µg/mg of lysate.
WB		1/1000 - 1/10000. Detects a band of approximately 140 kDa (predicted molecular weight: 128 kDa).

ターゲット情報

機能	<p>The elongation of primed DNA templates by DNA polymerase delta and epsilon requires the action of the accessory proteins PCNA and activator 1. This subunit binds to the primer-template junction. Binds the PO-B transcription element as well as other GA rich DNA sequences. Could play a role in DNA transcription regulation as well as DNA replication and/or repair. Can bind single- or double-stranded DNA.</p> <p>Interacts with C-terminus of PCNA. 5' phosphate residue is required for binding of the N-terminal DNA-binding domain to duplex DNA, suggesting a role in recognition of non-primer template DNA structures during replication and/or repair.</p>
組織特異性	Wide tissue distribution. Undetectable in placental tissue.
配列類似性	Belongs to the activator 1 large subunit family. Contains 1 BRCT domain.
翻訳後修飾	Phosphorylated upon DNA damage, probably by ATM or ATR.
細胞内局在	Nucleus.

画像



Detection of Human RFC 1 by Western Blot and Immunoprecipitation using Affinity Purified Rabbit anti-RFC 1 (ab3853)

Sample: Nuclear Extract (NE, amounts used are indicated) from HeLa cells.

Antibody: Affinity Purified Rb anti-RFC 1 (ab3853).

WB - 0.5µg/ml, IP - 2µg/mg NE.

Detection: ECL, 30 seconds

Please note: All products are "FOR RESEARCH USE ONLY AND ARE NOT INTENDED FOR DIAGNOSTIC OR THERAPEUTIC USE"

Our Abpromise to you: Quality guaranteed and expert technical support

- Replacement or refund for products not performing as stated on the datasheet
- Valid for 12 months from date of delivery
- Response to your inquiry within 24 hours
- We provide support in Chinese, English, French, German, Japanese and Spanish
- Extensive multi-media technical resources to help you
- We investigate all quality concerns to ensure our products perform to the highest standards

If the product does not perform as described on this datasheet, we will offer a refund or replacement. For full details of the Abpromise, please visit <http://www.abcam.co.jp/abpromise> or contact our technical team.

Terms and conditions

- Guarantee only valid for products bought direct from Abcam or one of our authorized distributors