

Product datasheet

Anti-Psoriasis antibody [47C1068] ab13680

★★★★★ 2 Abreviews 14 References 画像数 3

製品の概要

製品名	Anti-Psoriasis antibody [47C1068]
製品の詳細	Mouse monoclonal [47C1068] to Psoriasis
アプリケーション	適用あり: IP, ICC/IF, Flow Cyt, WB, IHC-Fr, IHC-P
種交差性	交差種: Human
免疫原	Recombinant full length protein (Human).
ポジティブ・コントロール	Confluent MCF10A cells.

製品の特性

製品の状態	Liquid
保存方法	Shipped at 4°C. Store at +4°C short term (1-2 weeks). Upon delivery aliquot. Store at -20°C or -80°C. Avoid freeze / thaw cycle.
バッファー	Preservative: 0.05% Sodium Azide Constituents: 0.05% BSA, PBS
精製度	Protein G purified
特記事項(精製)	This antibody is affinity purified.
ポリ/モノ	モノクローナル
クローン名	47C1068
アイソタイプ	IgG1
軽鎖の種類	kappa

アプリケーション

Our [Abpromise guarantee](#) covers the use of **ab13680** in the following tested applications.

The application notes include recommended starting dilutions; optimal dilutions/concentrations should be determined by the end user.

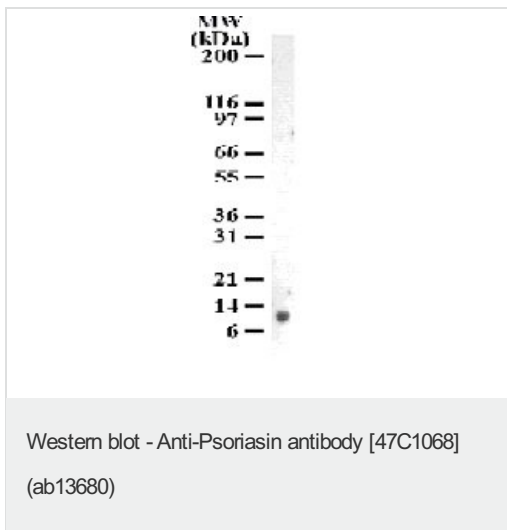
アプリケーション	Abreviews	特記事項
IP		Use at an assay dependent concentration.
ICC/IF		Use a concentration of 5 µg/ml.

Flow Cyt	★★★★★	Use at an assay dependent concentration. ab170190 -Mouse monoclonal IgG1, is suitable for use as an isotype control with this antibody.
WB		Use a concentration of 1 µg/ml. Detects a band of approximately 11 kDa (predicted molecular weight: 12.1 kDa).
IHC-Fr	★★★★★	Use at an assay dependent concentration. (PMID 18606705).
IHC-P		Use at an assay dependent concentration.

ターゲット情報

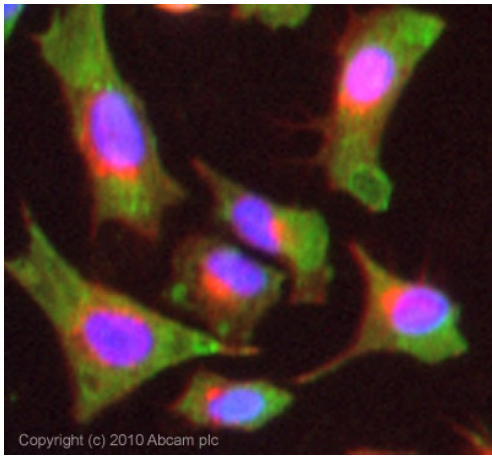
組織特異性	Fetal ear, skin, and tongue and human cell lines. Highly up-regulated in psoriatic epidermis. Also highly expressed in the urine of bladder squamous cell carcinoma (SCC) bearing patients.
配列類似性	Belongs to the S-101 family. Contains 2 EF-hand domains.
細胞内局在	Cytoplasm. Secreted. Secreted by a non-classical secretory pathway.

Anti-Psoriasin antibody [47C1068] 画像



Predicted band size : 12.1 kDa

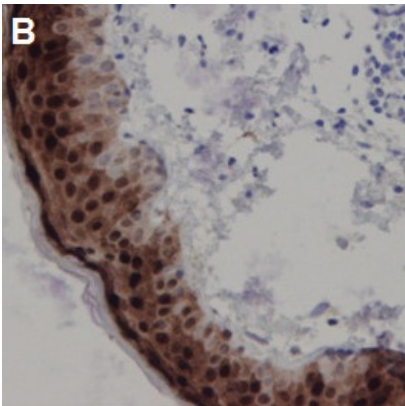
Western blot analysis of Psoriasin in confluent MCF10A cells using ab13680 at 1 µg/ml.



Immunocytochemistry/ Immunofluorescence - Anti-Psoriasis antibody [47C1068] (ab13680)

ICC/IF image of ab13680 stained HeLa cells.

The cells were 4% formaldehyde fixed (10 min) and then incubated in 1%BSA / 10% normal goat serum / 0.3M glycine in 0.1% PBS-Tween for 1h to permeabilise the cells and block non-specific protein-protein interactions. The cells were then incubated with the antibody (ab13680, 5µg/ml) overnight at +4°C. The secondary antibody (green) was Alexa Fluor® 488 goat anti-mouse IgG (H+L) used at a 1/1000 dilution for 1h. Alexa Fluor® 594 WGA was used to label plasma membranes (red) at a 1/200 dilution for 1h. DAPI was used to stain the cell nuclei (blue) at a concentration of 1.43µM.



Immunohistochemistry (Formalin/PFA-fixed paraffin-embedded sections) - Anti-Psoriasis antibody [47C1068] (ab13680)

Image from Kvamhammar AMet al., Respir Res. 2012 Jan 9;13:2. Fig 3.; doi:10.1186/1465-9921-13-2; 9 January 2012, Respiratory Research 2012, 13:2

Immunohistochemical analysis of Human nasal epithelium, staining Psoriasis with ab13680 at 1/100 dilution. Antigen retrieval was performed in a microwave oven in target retrieval solution (pH 6).

Please note: All products are "FOR RESEARCH USE ONLY AND ARE NOT INTENDED FOR DIAGNOSTIC OR THERAPEUTIC USE"

Our Abpromise to you: Quality guaranteed and expert technical support

- Replacement or refund for products not performing as stated on the datasheet
- Valid for 12 months from date of delivery
- Response to your inquiry within 24 hours
- We provide support in Chinese, English, French, German, Japanese and Spanish
- Extensive multi-media technical resources to help you
- We investigate all quality concerns to ensure our products perform to the highest standards

If the product does not perform as described on this datasheet, we will offer a refund or replacement. For full details of the Abpromise, please visit <http://www.abcam.co.jp/abpromise> or contact our technical team.

Terms and conditions

- Guarantee only valid for products bought direct from Abcam or one of our authorized distributors