

Protease Activity Assay Kit ab111750

画像数 2

製品の概要

製品名	Protease Activity Assay Kit
サンプルの種類	Cell culture supernatant, Milk, Urine, Serum, Plasma, Other biological fluids, Tissue Extracts
アッセイタイプ	Enzyme activity
検出感度	< 500 pg/well
全工程の試験時間	1h 00m
製品の概要	<p>Abcam's Protease Activity Assay Kit is designed for the quantitative determination of proteases present in the protein sample. The assay uses fluorescein isothiocyanate (FITC)-labeled casein as a general protease substrate. The fluorescein label on the FITC-Casein is highly quenched. Upon digestion by proteases present in the sample the FITC-Casein substrate is cleaved into smaller peptides which abolishes the quenching of the fluorescence label. The fluorescence of the FITC-labeled peptide fragments is measured at Ex/Em = 485/530 nm. The kit is supplied with our Mass Spectrometry Grade (MSG), chemically stabilized Trypsin for use as a general protease control. However, other protease standard controls can also be used. This kit is easy to use and can detect < 500 pg/well Trypsin present in the sample</p> <p>Visit our FAQs page for tips and troubleshooting.</p>

特記事項	<p>Proteases are naturally present in all organisms. These enzymes are involved in a multitude of physiological reactions from simple digestion of food proteins to highly regulated cascades. Proteases can either break specific peptide bonds (limited proteolysis), depending on the amino acid sequence of a protein, or break down a complete peptide to amino acids (unlimited proteolysis). The activity can be a destructive change (abolishing a protein's function), an activation of a function (preform to mature form) or it can be a signal in a signaling pathway.</p>
-------------	--

アプリケーション	適用あり: Functional Studies
-----------------	---------------------------------

製品の特性

保存方法	Store at -20°C. Please refer to protocols.
-------------	--

内容	ラベル	100 tests
FITC Standard (25 µM)	Yellow cap	1 x 200µl
Positive Control (lyophilized)	Green cap	1 vial

内容	ラベル	100 tests
Protease Assay Buffer	WM	1 x 25ml
Protease Substrate (lyophilized)	Red cap	1 vial

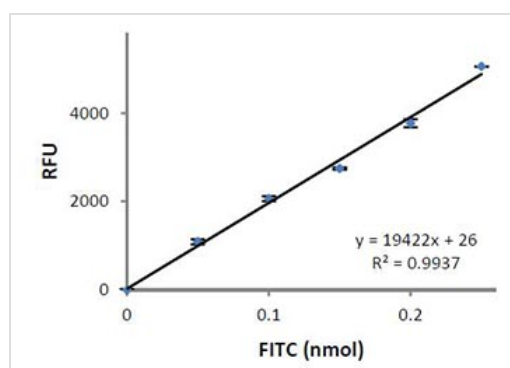
アプリケーション

Our [Abpromise guarantee](#) covers the use of **ab111750** in the following tested applications.

The application notes include recommended starting dilutions; optimal dilutions/concentrations should be determined by the end user.

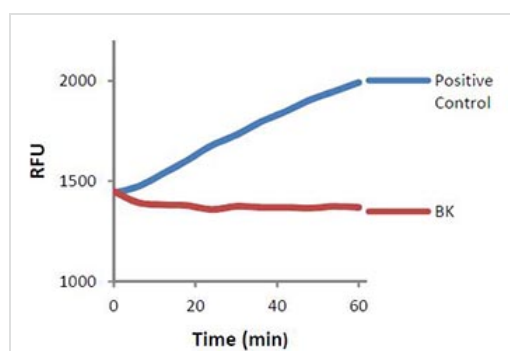
アプリケーション	Abreviews	特記事項
Functional Studies		Use at an assay dependent dilution.

画像



Example Standard curve obtained using ab111750

Functional Studies - Protease Activity Assay Kit (ab111750)



Positive control assayed using ab111750

Functional Studies - Protease Activity Assay Kit (ab111750)

Please note: All products are "FOR RESEARCH USE ONLY AND ARE NOT INTENDED FOR DIAGNOSTIC OR THERAPEUTIC USE"

Our Abpromise to you: Quality guaranteed and expert technical support

- Replacement or refund for products not performing as stated on the datasheet
- Valid for 12 months from date of delivery
- Response to your inquiry within 24 hours

- We provide support in Chinese, English, French, German, Japanese and Spanish
- Extensive multi-media technical resources to help you
- We investigate all quality concerns to ensure our products perform to the highest standards

If the product does not perform as described on this datasheet, we will offer a refund or replacement. For full details of the Abpromise, please visit <http://www.abcam.co.jp/abpromise> or contact our technical team.

Terms and conditions

- Guarantee only valid for products bought direct from Abcam or one of our authorized distributors