

## Product datasheet

# Anti-Prolyl Endopeptidase antibody ab58993

### 画像数 1

#### 製品の概要

製品名	Anti-Prolyl Endopeptidase antibody
製品の詳細	Rabbit polyclonal to Prolyl Endopeptidase
特異性	ab58993 reacts with POP.
アプリケーション	<b>適用あり:</b> WB
種交差性	<b>交差種:</b> Mouse, Rat, Dog, Human
免疫原	Synthetic peptide based on the $\beta$ -Propeller domain of Prolyl Endopeptidase. Immunizing peptide available on request, please contact a customer service representative to ask for availability.

#### 製品の特性

製品の状態	Liquid
保存方法	Shipped at 4°C. Store at -20°C. Stable for 12 months at -20°C.
バッファー	Preservative: 0.05% Sodium Azide Constituents: 50% Glycerol, PBS, 500mM Sodium chloride, pH 7.4
精製度	Immunogen affinity purified
ポリ/モノ	ポリクローナル
アイソタイプ	IgG

#### アプリケーション

Our [Abpromise guarantee](#) covers the use of **ab58993** in the following tested applications.

The application notes include recommended starting dilutions; optimal dilutions/concentrations should be determined by the end user.

アプリケーション	Abreviews	特記事項
WB		

#### 追加情報

WB: 1/1000 - 1/5000 dependent on substrate. Predicted molecular weight: 81 kDa.  
A recommended starting concentration for Western blots is 1:1,000 when using colorimetric substrates such as BCIP/NBT, and 1:5,000 for chemiluminescent substrates.

EDTA/EGTA treatment of tissues or lysates is required to see latent zymogen.

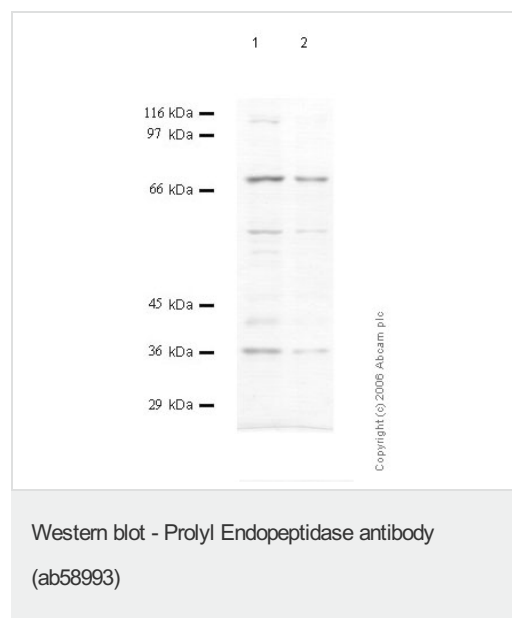
Not yet tested in other applications.

Optimal dilutions/concentrations should be determined by the end user.

## ターゲット情報

機能	Cleaves peptide bonds on the C-terminal side of prolyl residues within peptides that are up to approximately 30 amino acids long.
配列類似性	Belongs to the peptidase S9A family.
翻訳後修飾	The N-terminus is blocked.
細胞内局在	Cytoplasm.

## 画像



**All lanes** : Anti-Prolyl Endopeptidase antibody (ab58993) at 1/1000 dilution

**Lane 1** : Madin Darby canine kidney (MDCK) cell lysate at 10 µl

**Lane 2** : Madin Darby canine kidney (MDCK) cell lysate at 5 µl

**Predicted band size** : 81 kDa

**Please note:** All products are "FOR RESEARCH USE ONLY AND ARE NOT INTENDED FOR DIAGNOSTIC OR THERAPEUTIC USE"

## Our Abpromise to you: Quality guaranteed and expert technical support

- Replacement or refund for products not performing as stated on the datasheet
- Valid for 12 months from date of delivery
- Response to your inquiry within 24 hours
- We provide support in Chinese, English, French, German, Japanese and Spanish
- Extensive multi-media technical resources to help you
- We investigate all quality concerns to ensure our products perform to the highest standards

If the product does not perform as described on this datasheet, we will offer a refund or replacement. For full details of the Abpromise, please visit <http://www.abcam.co.jp/abpromise> or contact our technical team.

## Terms and conditions

---

- Guarantee only valid for products bought direct from Abcam or one of our authorized distributors