

Product datasheet

Anti-Prealbumin antibody ab9015

★★★★☆ 5 Abreviews 13 References 画像数 1

製品の概要

製品名	Anti-Prealbumin antibody
製品の詳細	Sheep polyclonal to Prealbumin
由来種	Sheep
アプリケーション	適用あり: WB, IHC-P, Other, RID, Immunoelectrophoresis, Double Immunodiffusion, ICC/IF
種交差性	交差種: Mouse, Rat, Rabbit, Goat, Horse, Chicken, Guinea pig, Cow, Cat, Dog, Human, Pig
免疫原	Human prealbumin purified from plasma.
ポジティブ・コントロール	This antibody gave a positive result when used in the following methanol fixed cell lines: HepG2.

製品の特性

製品の状態	Liquid
保存方法	Shipped at 4°C. Store at +4°C short term (1-2 weeks). Store at -20°C or -80°C. Avoid freeze / thaw cycle.
バッファー	Glycine buffered saline pH7.4, 0.1% Sodium Azide, 0.1% EACA, 0.01% Benzamidine, 1mM EDTA
精製度	IgG fraction
特記事項(精製)	Antiserum is prepared by immunisation of sheep with Human Prealbumin and, if necessary, adsorbed to monospecificity by use of solid-phase adsorbents. An immunoglobulin fraction is then produced. The titre is adjusted so that inter-batch variation is within 10%. The product is 0.2µm filtered.
ポリ/モノ	ポリクローナル
アイソタイプ	IgG
軽鎖の種類	unknown

アプリケーション

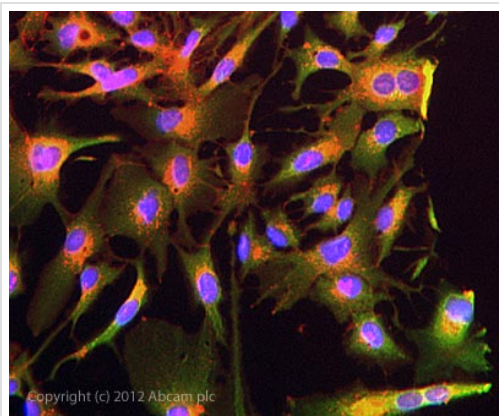
Our [Abpromise guarantee](#) covers the use of **ab9015** in the following tested applications.

The application notes include recommended starting dilutions; optimal dilutions/concentrations should be determined by the end user.

アプリケーション	Abreviews	特記事項
WB	★★★★☆	1/5000. Predicted molecular weight: 15 kDa. PubMed: 16705188
IHC-P	★★★★★	1/1000. PubMed: 16705188
Other		Use at an assay dependent concentration.
RID		Use at an assay dependent concentration.
Immuno-electrophoresis		Use at an assay dependent concentration.
Double Immunodiffusion		Use at an assay dependent concentration.
ICC/IF		Use a concentration of 5 µg/ml.

ターゲット情報

機能	Thyroid hormone-binding protein. Probably transports thyroxine from the bloodstream to the brain.
組織特異性	Detected in serum and cerebrospinal fluid (at protein level). Highly expressed in choroid plexus epithelial cells. Detected in retina pigment epithelium and liver.
関連疾患	<p>Defects in TTR are the cause of amyloidosis transthyretin-related (AMYL-TTR) [MIM:105210]. A hereditary generalized amyloidosis due to transthyretin amyloid deposition. Protein fibrils can form in different tissues leading to amyloid polyneuropathies, amyloidotic cardiomyopathy, carpal tunnel syndrome, systemic senile amyloidosis. The disease includes leptomeningeal amyloidosis that is characterized by primary involvement of the central nervous system. Neuropathologic examination shows amyloid in the walls of leptomeningeal vessels, in pia arachnoid, and subpial deposits. Some patients also develop vitreous amyloid deposition that leads to visual impairment (oculoleptomeningeal amyloidosis). Clinical features include seizures, stroke-like episodes, dementia, psychomotor deterioration, variable amyloid deposition in the vitreous humor.</p> <p>Defects in TTR are a cause of hyperthyroxinemia dystanthyretinemic euthyroidal (HTDE) [MIM:145680]. It is a condition characterized by elevation of total and free thyroxine in healthy, euthyroid persons without detectable binding protein abnormalities.</p> <p>Defects in TTR are a cause of carpal tunnel syndrome type 1 (CTS1) [MIM:115430]. It is a condition characterized by entrapment of the median nerve within the carpal tunnel. Symptoms include burning pain and paresthesias involving the ventral surface of the hand and fingers which may radiate proximally. Impairment of sensation in the distribution of the median nerve and thenar muscle atrophy may occur. This condition may be associated with repetitive occupational trauma, wrist injuries, amyloid neuropathies, rheumatoid arthritis.</p>
配列類似性	Belongs to the transthyretin family.
ドメイン	Each monomer has two 4-stranded beta sheets and the shape of a prolate ellipsoid. Antiparallel beta-sheet interactions link monomers into dimers. A short loop from each monomer forms the main dimer-dimer interaction. These two pairs of loops separate the opposed, convex beta-sheets of the dimers to form an internal channel.
細胞内局在	Secreted. Cytoplasm.



Immunocytochemistry/ Immunofluorescence - Anti-Prealbumin antibody (ab9015)

ICC/IF image of ab9015 stained HepG2 cells. The cells were 100% methanol fixed (5 min) and then incubated in 1%BSA / 10% normal donkey serum / 0.3M glycine in 0.1% PBS-Tween for 1h to permeabilise the cells and block non-specific protein-protein interactions. The cells were then incubated with the antibody ab9015 at 5µg/ml overnight at +4°C. The secondary antibody (green) was DyLight® 488 donkey anti- sheep (ab96939) IgG (H+L) used at a 1/250 dilution for 1h. Alexa Fluor® 594 WGA was used to label plasma membranes (red) at a 1/200 dilution for 1h. DAPI was used to stain the cell nuclei (blue) at a concentration of 1.43µM.

Please note: All products are "FOR RESEARCH USE ONLY AND ARE NOT INTENDED FOR DIAGNOSTIC OR THERAPEUTIC USE"

Our Abpromise to you: Quality guaranteed and expert technical support

- Replacement or refund for products not performing as stated on the datasheet
- Valid for 12 months from date of delivery
- Response to your inquiry within 24 hours
- We provide support in Chinese, English, French, German, Japanese and Spanish
- Extensive multi-media technical resources to help you
- We investigate all quality concerns to ensure our products perform to the highest standards

If the product does not perform as described on this datasheet, we will offer a refund or replacement. For full details of the Abpromise, please visit <http://www.abcam.co.jp/abpromise> or contact our technical team.

Terms and conditions

- Guarantee only valid for products bought direct from Abcam or one of our authorized distributors