

## Product datasheet

# Anti-Plexin B1 antibody ab90087

★★★★★ 1 Abreviews 1 References 画像数 5

### 製品の概要

製品名	Anti-Plexin B1 antibody
製品の詳細	Rabbit polyclonal to Plexin B1
由来種	Rabbit
アプリケーション	適用あり: WB, IHC-P, ICC/IF, IP
種交差性	交差種: Mouse, Human 交差が予測される動物種: Rat
免疫原	A synthetic peptide from near N terminal residues of Human Plexin B1 (NM_002673).
ポジティブ・コントロール	Rat kidney tissue; fetal kidney lysate, rat brain lysate and rat testis lysate

### 製品の特性

製品の状態	Liquid
保存方法	Shipped at 4°C. Upon delivery aliquot and store at -20°C. Avoid repeated freeze / thaw cycles.
バッファー	Preservative: 0.02% Sodium Azide Constituents: 2% BSA
精製度	Protein A purified
ポリモノ	ポリクローナル
アイソタイプ	IgG

### アプリケーション

Our [Abpromise guarantee](#) covers the use of **ab90087** in the following tested applications.

The application notes include recommended starting dilutions; optimal dilutions/concentrations should be determined by the end user.

アプリケーション	Abreviews	特記事項
WB		1/200 - 1/1000. Predicted molecular weight: 232 kDa. Can be blocked with <a href="#">Plexin B1 peptide (ab196855)</a> .
IHC-P	★★★★★	1/50 - 1/200.

アプリケーション	Abreviews	特記事項
ICC/IF		Use a concentration of 5 µg/ml.
IP		Use a concentration of 5 µg/ml.

## ターゲット情報

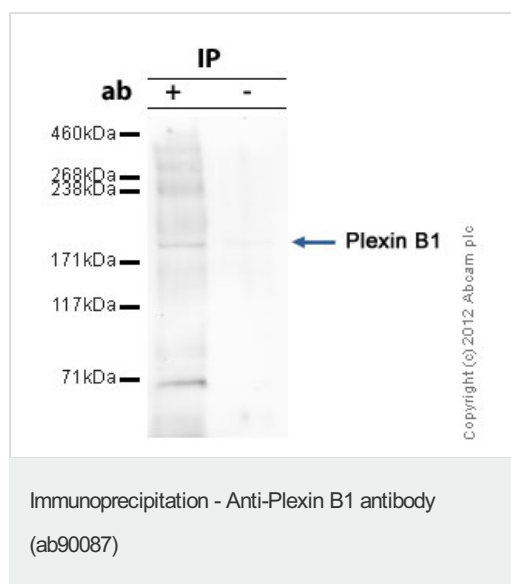
### 関連性

Plexin B1 is the transmembrane receptor for the class 4 semaphorin, SEMA4D. Plexin B1 activation plays a role in axon guidance, invasive growth and cell migration and has been reported to have additional roles in RHOA activation and subsequent changes of the actin cytoskeleton.

### 細胞内局在

Secreted and single pass type I membrane protein.

## 画像



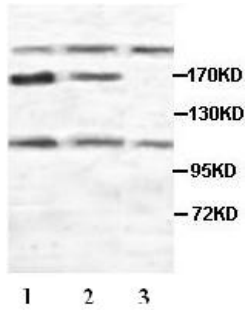
Plexin B1 was immunoprecipitated using 0.5mg Rat brain tissue extract, 5µg of Rabbit polyclonal to Plexin B1 and 50µl of protein G magnetic beads (+). No antibody was added to the control (-).

The antibody was incubated under agitation with Protein G beads for 10min, Rat brain tissue extract lysate diluted in RIPA buffer was added to each sample and incubated for a further 10min under agitation.

Proteins were eluted by addition of 40µl SDS loading buffer and incubated for 10min at 70°C; 10µl of each sample was separated on a SDS PAGE gel, transferred to a nitrocellulose membrane, blocked with 5% BSA and probed with ab90087.

Secondary: Mouse monoclonal [SB62a]  
Secondary Antibody to Rabbit IgG light chain (HRP) (ab99697).

Band: 232kDa; Plexin B1



Western blot - Anti-Plexin B1 antibody (ab90087)

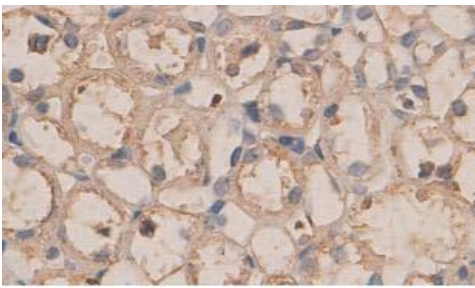
**All lanes :** Anti-Plexin B1 antibody (ab90087)  
at 1/500 dilution

**Lane 1 :** rat brain lysate

**Lane 2 :** rat testis lysate

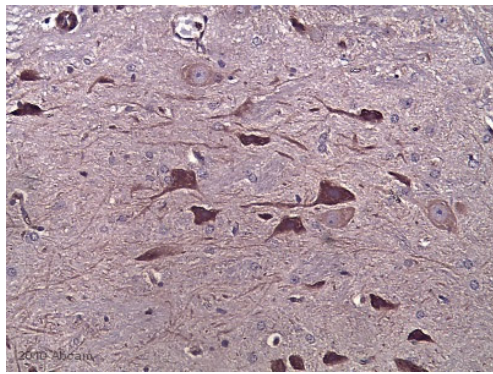
**Lane 3 :** fetal kidney lysate

**Predicted band size:** 232 kDa



Immunohistochemistry (Formalin/PFA-fixed paraffin-embedded sections) - Anti-Plexin B1 antibody (ab90087)

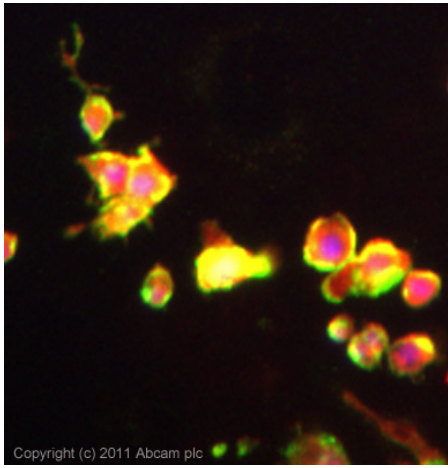
Immunohistochemical staining of formalin-fixed paraffin-embedded rat kidney using ab90087 at 1/100.



Immunohistochemistry (Formalin/PFA-fixed paraffin-embedded sections) - Anti-Plexin B1 antibody (ab90087)

This image is courtesy of an Abreview submitted by Manoj Kumar Valluru

ab90087 staining Plexin B1 in Mouse brain tissue sections by Immunohistochemistry (IHC-P - formaldehyde-fixed, paraffin-embedded sections). Tissue was fixed with formaldehyde and blocked with 10% serum for 1 hour at room temperature; antigen retrieval was by heat mediation in citrate buffer (pH 6). Samples were incubated with primary antibody (1/500 in PBS + 2% Blocking Serum) for 16 hours at 4°C. A Biotin-conjugated goat anti-rabbit IgG polyclonal (1/250) was used as the secondary antibody.



Immunocytochemistry/ Immunofluorescence - Anti-Plexin B1 antibody (ab90087)

ICC/IF image of ab90087 stained PC12 cells. The cells were 4% PFA fixed (10mins) and then incubated in 1%BSA / 10% normal goat serum / 0.3M glycine in 0.1% PBS-Tween for 1h to permeabilise the cells and block non-specific protein-protein interactions. The cells were then incubated with the antibody (ab90087, 5µg/ml) overnight at +4°C. The secondary antibody (green) was [ab96899](#) Dylight 488 goat anti-rabbit IgG (H+L) used at a 1/250 dilution for 1h. Alexa Fluor® 594 WGA was used to label plasma membranes (red) at a 1/200 dilution for 1h. DAPI was used to stain the cell nuclei (blue) at a concentration of 1.43µM.

**Please note:** All products are "FOR RESEARCH USE ONLY AND ARE NOT INTENDED FOR DIAGNOSTIC OR THERAPEUTIC USE"

### Our Abpromise to you: Quality guaranteed and expert technical support

- Replacement or refund for products not performing as stated on the datasheet
- Valid for 12 months from date of delivery
- Response to your inquiry within 24 hours
- We provide support in Chinese, English, French, German, Japanese and Spanish
- Extensive multi-media technical resources to help you
- We investigate all quality concerns to ensure our products perform to the highest standards

If the product does not perform as described on this datasheet, we will offer a refund or replacement. For full details of the Abpromise, please visit <http://www.abcam.co.jp/abpromise> or contact our technical team.

### Terms and conditions

- Guarantee only valid for products bought direct from Abcam or one of our authorized distributors