

Product datasheet

Anti-Placental alkaline phosphatase (PLAP) antibody [EPR6140]  
ab124772

リコンビナント RabMAb<sup>®</sup>

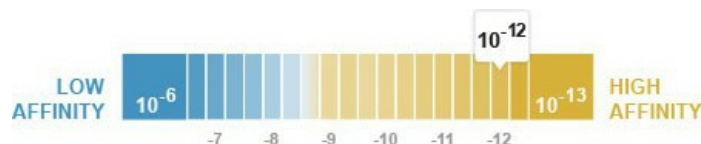
画像数 2

製品の概要

製品名	Anti-Placental alkaline phosphatase (PLAP) antibody [EPR6140]
製品の詳細	Rabbit monoclonal [EPR6140] to Placental alkaline phosphatase (PLAP)
アプリケーション	<b>適用あり:</b> WB <b>適用なし:</b> Flow Cyt, IHC-P or IP
種交差性	<b>交差種:</b> Human
免疫原	Synthetic peptide corresponding to residues of Human Placental alkaline phosphatase (PLAP)
ポジティブ・コントロール	HeLa and Human placenta cell lysates
特記事項	This product is a recombinant rabbit monoclonal antibody.  Mouse, Rat: We have preliminary internal testing data to indicate this antibody may not react with these species. Please contact us for more information.  Our RabMAb <sup>®</sup> technology is a patented hybridoma-based technology for making rabbit monoclonal antibodies. For details on our patents, please refer to <a href="#">RabMAb<sup>®</sup> patents</a>

製品の特性

製品の状態	Liquid
保存方法	Shipped at 4°C. Store at -20°C. Stable for 12 months at -20°C.
解離定数 (K <sub>D</sub> 値)	K <sub>D</sub> = 9.00 x 10 <sup>-12</sup> M



[Learn more about K<sub>D</sub>](#)

バッファー	PBS 49%, Sodium azide 0.01%, Glycerol 50%, BSA 0.05%
精製度	Tissue culture supernatant
ポリ/モノ	モノクローナル
クローン名	EPR6140

アイソタイプ

IgG

## アプリケーション

Our [Abpromise guarantee](#) covers the use of **ab124772** in the following tested applications.

The application notes include recommended starting dilutions; optimal dilutions/concentrations should be determined by the end user.

アプリケーション	Abreviews	特記事項
WB		1/1000 - 1/10000. Detects a band of approximately 70 kDa (predicted molecular weight: 58 kDa).

## 追加情報

Is unsuitable for Flow Cyt, IHC-P or IP.

## ターゲット情報

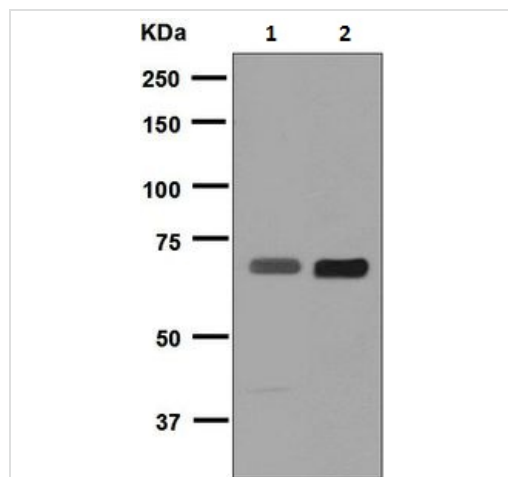
### 配列類似性

Belongs to the alkaline phosphatase family.

### 細胞内局在

Cell membrane.

## 画像



- Anti-Placental alkaline phosphatase (PLAP) antibody [EPR6140] (ab124772)

**All lanes** : Anti-Placental alkaline phosphatase (PLAP) antibody [EPR6140] (ab124772) at 1/1000 dilution

**Lane 1** : HeLa cell lysate

**Lane 2** : Human placenta cell lysate

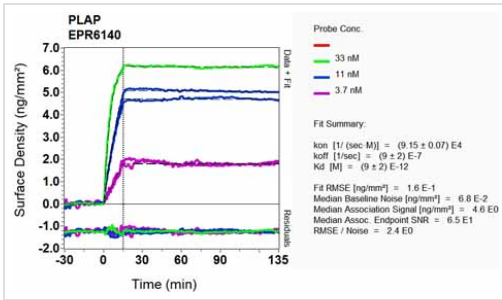
Lysates/proteins at 10 µg per lane.

### Secondary

HRP labelled Goat anti Rabbit at 1/2000 dilution

**Predicted band size** : 58 kDa

**Observed band size** : 70 kDa



Other-Anti-Placental alkaline phosphatase (PLAP) antibody [EPR6140](ab124772)

Equilibrium disassociation constant ( $K_D$ )

Learn more about  $K_D$

[Click here to learn more about  \$K\_D\$](#)

**Please note:** All products are "FOR RESEARCH USE ONLY AND ARE NOT INTENDED FOR DIAGNOSTIC OR THERAPEUTIC USE"

### Our Abpromise to you: Quality guaranteed and expert technical support

- Replacement or refund for products not performing as stated on the datasheet
- Valid for 12 months from date of delivery
- Response to your inquiry within 24 hours
- We provide support in Chinese, English, French, German, Japanese and Spanish
- Extensive multi-media technical resources to help you
- We investigate all quality concerns to ensure our products perform to the highest standards

If the product does not perform as described on this datasheet, we will offer a refund or replacement. For full details of the Abpromise, please visit <http://www.abcam.co.jp/abpromise> or contact our technical team.

### Terms and conditions

- Guarantee only valid for products bought direct from Abcam or one of our authorized distributors