

Product datasheet

Anti-Pin1 (phospho S16) antibody [EP1480Y] ab62378

リコンビナント RabMAb®

★★★★☆ 1 Abreviews [画像数 1](#)

製品の概要

製品名	Anti-Pin1 (phospho S16) antibody [EP1480Y]
製品の詳細	Rabbit monoclonal [EP1480Y] to Pin1 (phospho S16)
由来種	Rabbit
特異性	This antibody detects Pin1 phosphorylated at Serine 16.
アプリケーション	適用あり: WB, ICC 適用なし: Flow Cyt or IP
種交差性	交差種: Human
免疫原	Phospho specific peptide corresponding to residues surround Serine 16 of human Pin1.
ポジティブ・コントロール	HeLa cell lysate.
特記事項	Mouse, Rat: We have preliminary internal testing data to indicate this antibody may not react with these species. Please contact us for more information. Our RabMAb® technology is a patented hybridoma-based technology for making rabbit monoclonal antibodies. For details on our patents, please refer to RabMAb® patents This product is a recombinant rabbit monoclonal antibody.

製品の特性

製品の状態	Liquid
保存方法	Shipped at 4°C. Upon delivery aliquot and store at -20°C. Avoid freeze / thaw cycles.
バッファー	PBS 49%,Sodium azide 0.01%,Glycerol 50%,BSA 0.05%
精製度	Tissue culture supernatant
ポリ/モノ	モノクローナル
クローン名	EP1480Y
アイソタイプ	IgG

アプリケーション

Our [Abpromise guarantee](#) covers the use of **ab62378** in the following tested applications.

The application notes include recommended starting dilutions; optimal dilutions/concentrations should be determined by the end user.

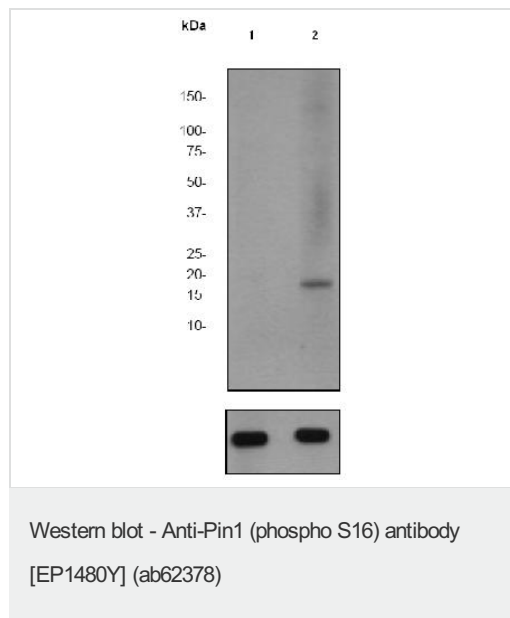
アプリケーション	Abreviews	特記事項
WB		1/500. Detects a band of approximately 18 kDa (predicted molecular weight: 18 kDa).
ICC		1/100 - 1/250.

追加情報 Is unsuitable for Flow Cyt or IP.

ターゲット情報

機能	Essential PPlase that regulates mitosis presumably by interacting with NIMA and attenuating its mitosis-promoting activity. Displays a preference for an acidic residue N-terminal to the isomerized proline bond. Catalyzing pSer/Thr-Pro cis/trans isomerizations.
配列類似性	Contains 1 PpiC domain. Contains 1 WW domain.
ドメイン	The WW domain is required for the interaction with STIL and KIF20B.
翻訳後修飾	Phosphorylated upon DNA damage, probably by ATM or ATR.
細胞内局在	Nucleus.

画像



All lanes : Anti-Pin1 (phospho S16) antibody [EP1480Y] (ab62378) at 1/500 dilution

Lane 1 : HeLa cell lysate (untreated)

Lane 2 : HeLa cell lysate (treated with FBS + Calyculin A)

Lysates/proteins at 10 µg per lane.

Secondary

All lanes : Goat anti-Rabbit HRP conjugated at 1/2000 dilution

Predicted band size: 18 kDa

Observed band size: 18 kDa

The bottom image shows beta Tubulin.

Our Abpromise to you: Quality guaranteed and expert technical support

- Replacement or refund for products not performing as stated on the datasheet
- Valid for 12 months from date of delivery
- Response to your inquiry within 24 hours

- We provide support in Chinese, English, French, German, Japanese and Spanish
- Extensive multi-media technical resources to help you
- We investigate all quality concerns to ensure our products perform to the highest standards

If the product does not perform as described on this datasheet, we will offer a refund or replacement. For full details of the Abpromise, please visit <http://www.abcam.co.jp/abpromise> or contact our technical team.

Terms and conditions

- Guarantee only valid for products bought direct from Abcam or one of our authorized distributors