

Product datasheet

Anti-Phospholipase A2 (phospho S505) antibody ab53105

8 References 画像数 3

製品の概要

製品名	Anti-Phospholipase A2 (phospho S505) antibody
製品の詳細	Rabbit polyclonal to Phospholipase A2 (phospho S505)
由来種	Rabbit
特異性	ab53105 detects endogenous levels of Phospholipase A2 only when phosphorylated at serine 505.
アプリケーション	適用あり: IHC-Fr, WB, IHC-P, ELISA, ICC/IF
種交差性	交差種: Mouse, Rat, Human
免疫原	A synthetic phosphopeptide derived from human Phospholipase A2 around the phosphorylation site of serine 505 (P-L-S ^P -P-L).
ポジティブ・コントロール	HIC-P: Human colon carcinoma tissue WB: Extracts from HeLa cells treated with TNF alpha

製品の特性

製品の状態	Liquid
保存方法	Shipped at 4°C. Store at -20°C. Stable for 12 months at -20°C.
バッファー	Preservative: 0.02% Sodium Azide Constituents: 50% Glycerol, PBS (without Mg ²⁺ and Ca ²⁺), 150mM Sodium chloride, pH 7.4
精製度	Immunogen affinity purified
特記事項(精製)	ab53105 was affinity purified from rabbit antiserum by affinity chromatography using epitope-specific phosphopeptide. The antibody against non-phosphopeptide was removed by chromatography using non-phosphopeptide corresponding to the phosphorylation site.
ポリ/モノ	ポリクローナル
アイソタイプ	IgG

アプリケーション

Our [Abpromise guarantee](#) covers the use of **ab53105** in the following tested applications.

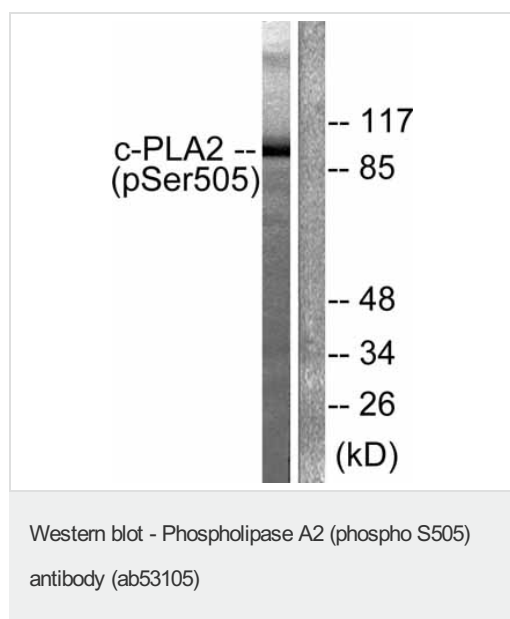
The application notes include recommended starting dilutions; optimal dilutions/concentrations should be determined by the end user.

アプリケーション	Abreviews	特記事項
IHC-Fr		1/100. PubMed: 23773289
WB		1/300 - 1/1000. Detects a band of approximately 110 kDa (predicted molecular weight: 85 kDa).
IHC-P		Use at an assay dependent concentration.
ELISA		1/10000.
ICC/IF		Use a concentration of 5 µg/ml.

ターゲット情報

機能	Selectively hydrolyzes arachidonyl phospholipids in the sn-2 position releasing arachidonic acid. Together with its lysophospholipid activity, it is implicated in the initiation of the inflammatory response.
組織特異性	Expressed in various tissues such as macrophages, platelets, neutrophils, fibroblasts and lung endothelium.
配列類似性	Contains 1 C2 domain. Contains 1 PLA2c domain.
ドメイン	The N-terminal C2 domain associates with lipid membranes upon calcium binding. It modulates enzyme activity by presenting the active site to its substrate in response to elevations of cytosolic Ca(2+).
翻訳後修飾	Activated by phosphorylation at both Ser-505 and Ser-727.
細胞内局在	Cytoplasm. Cytoplasmic vesicle. Translocates to membrane vesicles in a calcium-dependent fashion.

画像

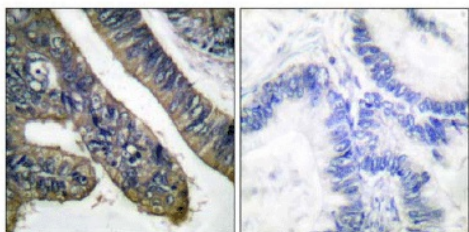


All lanes : Anti-Phospholipase A2 (phospho S505) antibody (ab53105) at 1/300 dilution

Lane 1 : extracts from HeLa cells treated with TNF-a (20ng/ml, 30mins)

Lane 2 : extracts from HeLa cells treated with TNF-a (20ng/ml, 30mins) with immunising peptide

Predicted band size: 85 kDa



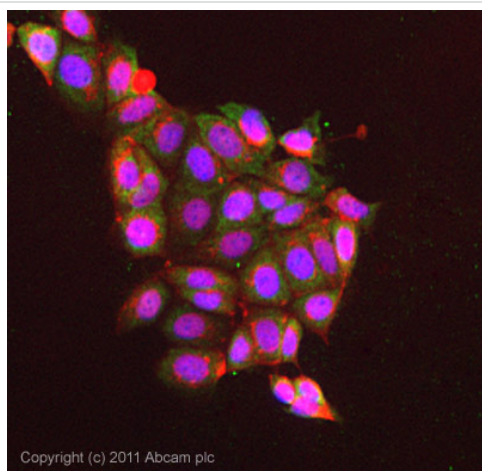
P-peptide - +

Immunohistochemistry (Paraffin-embedded sections)

- Phospholipase A2 (phospho S505) antibody
(ab53105)

ab53105 at 1/50 dilution staining

Phospholipase A2 in human colon carcinoma by Immunohistochemistry, Paraffin embedded tissue, in the absence and presence of the immunising peptide.



Immunocytochemistry/ Immunofluorescence-
Phospholipase A2 (phospho S505)
antibody(ab53105)

ICC/IF image of ab53105 stained MCF7 cells.

The cells were 4% formaldehyde fixed (10 min) and then incubated in 1%BSA / 10% normal goat serum / 0.3M glycine in 0.1% PBS-Tween for 1h to permeabilise the cells and block non-specific protein-protein interactions. The cells were then incubated with the antibody (ab53105, 5µg/ml) overnight at +4°C. The secondary antibody (green) was [ab96899](#), DyLight® 488 goat anti-rabbit IgG (H+L) used at a 1/250 dilution for 1h. Alexa Fluor® 594 WGA was used to label plasma membranes (red) at a 1/200 dilution for 1h. DAPI was used to stain the cell nuclei (blue) at a concentration of 1.43µM.

Please note: All products are "FOR RESEARCH USE ONLY AND ARE NOT INTENDED FOR DIAGNOSTIC OR THERAPEUTIC USE"

Our Abpromise to you: Quality guaranteed and expert technical support

- Replacement or refund for products not performing as stated on the datasheet
- Valid for 12 months from date of delivery
- Response to your inquiry within 24 hours
- We provide support in Chinese, English, French, German, Japanese and Spanish
- Extensive multi-media technical resources to help you
- We investigate all quality concerns to ensure our products perform to the highest standards

If the product does not perform as described on this datasheet, we will offer a refund or replacement. For full details of the Abpromise, please visit <http://www.abcam.co.jp/abpromise> or contact our technical team.

Terms and conditions

- Guarantee only valid for products bought direct from Abcam or one of our authorized distributors