




Product datasheet

Anti-Palladin antibody ab92288

画像数 1

製品の概要

製品名	Anti-Palladin antibody
製品の詳細	Goat polyclonal to Palladin
アプリケーション	適用あり: WB
種交差性	交差種: Human 交差が予測される動物種: Mouse, Rat, Dog 
免疫原	Synthetic peptide: RDSGDENEPIQER , corresponding to internal sequence amino acids 1119-1131 of Human Palladin (NP_057165.3) <div style="text-align: right;">  Run BLAST with  Run BLAST with </div>
ポジティブ・コントロール	Human Umbilical Cord lysate

製品の特性

製品の状態	Liquid
保存方法	Shipped at 4°C. Upon delivery aliquot and store at -20°C. Avoid repeated freeze / thaw cycles.
バッファー	Preservative: 0.02% Sodium Azide Constituents: 0.5% BSA, Tris buffered saline, pH 7.3
精製度	Immunogen affinity purified
特記事項 (精製)	Purified from goat serum by ammonium sulphate precipitation followed by antigen affinity chromatography using the immunizing peptide.
ポリ/モノ	ポリクローナル
アイソタイプ	IgG

アプリケーション

Our [Abpromise guarantee](#) covers the use of **ab92288** in the following tested applications.

The application notes include recommended starting dilutions; optimal dilutions/concentrations should be determined by the end user.

WB

追加情報

WB: Use at a concentration of 0.1 - 0.3 µg/ml. Predicted molecular weight: 122 kDa.

Not yet tested in other applications.

Optimal dilutions/concentrations should be determined by the end user.

ターゲット情報

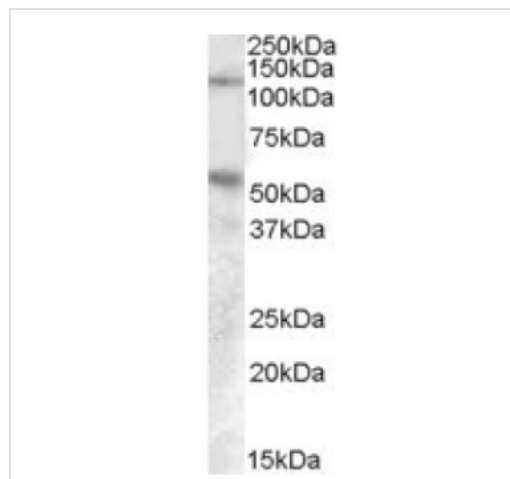
関連性

Cytoskeletal protein required for organization of normal actin cytoskeleton. Roles in establishing cell morphology, motility, cell adhesion and cell-extracellular matrix interactions in a variety of cell types. May function as a scaffolding molecule with the potential to influence both actin polymerization and the assembly of existing actin filaments into higher-order arrays. Binds to proteins that bind to either monomeric or filamentous actin. Localizes at sites where active actin remodeling takes place, such as lamellipodia and membrane ruffles. Different isoforms may have functional differences. Involved in the control of morphological and cytoskeletal changes associated with dendritic cell maturation. Involved in targeting ACTN to specific subcellular foci (from SwissProt).

細胞内局在

Cytoplasm, cytoskeleton. Note: Localizes to stress fibers and Z disks. Cell junction, focal adhesion. Cell projection, ruffle. Cell projection, lamellipodium.

画像



Western blot - Palladin antibody (ab92288)

Anti-Palladin antibody (ab92288) at 0.1 µg/ml

+ Human Umbilical Cord lysate at 35 µg

Developed using the ECL technique

Predicted band size : 122 kDa

Observed band size : 122 kDa

Additional bands at : 55 kDa. We are unsure as to the identity of these extra bands.

Please note: All products are "FOR RESEARCH USE ONLY AND ARE NOT INTENDED FOR DIAGNOSTIC OR THERAPEUTIC USE"

Our Abpromise to you: Quality guaranteed and expert technical support

- Replacement or refund for products not performing as stated on the datasheet

- Valid for 12 months from date of delivery
- Response to your inquiry within 24 hours

- We provide support in Chinese, English, French, German, Japanese and Spanish
- Extensive multi-media technical resources to help you
- We investigate all quality concerns to ensure our products perform to the highest standards

If the product does not perform as described on this datasheet, we will offer a refund or replacement. For full details of the Abpromise, please visit <http://www.abcam.co.jp/abpromise> or contact our technical team.

Terms and conditions

- Guarantee only valid for products bought direct from Abcam or one of our authorized distributors