


Product datasheet

Anti-PTRF antibody ab78553

★★★★★ 1 Abreviews 1 References 画像数 3

製品の概要

製品名	Anti-PTRF antibody
製品の詳細	Rabbit polyclonal to PTRF
由来種	Rabbit
アプリケーション	適用あり: IHC-P, WB, ICC/IF
種交差性	交差種: Mouse 交差が予測される動物種: Rat, Chicken, Human, Xenopus laevis 
免疫原	Synthetic peptide conjugated to KLH derived from within residues 150 - 250 of Mouse PTRF. Immunogen の所有権に関して (Peptide available as ab88117 .)
ポジティブ・コントロール	This antibody gave a positive signal in the following lysates: NIH 3T3 whole cell; MEF1 whole cell; Mouse liver tissue

製品の特性

製品の状態	Liquid
保存方法	Shipped at 4°C. Store at +4°C short term (1-2 weeks). Upon delivery aliquot. Store at -20°C or -80°C. Avoid freeze / thaw cycle.
バッファー	Preservative: 0.02% Sodium Azide Constituents: 1% BSA, PBS, pH 7.4
精製度	Immunogen affinity purified
ポリ/モノ	ポリクローナル
アイソタイプ	IgG

アプリケーション

Our [Abpromise guarantee](#) covers the use of **ab78553** in the following tested applications.

The application notes include recommended starting dilutions; optimal dilutions/concentrations should be determined by the end user.

アプリケーション	Abreviews	特記事項

アプリケーション	Abreviews	特記事項
IHC-P	★★★★★	Use a concentration of 5 µg/ml. Perform heat mediated antigen retrieval before commencing with IHC staining protocol.
WB		Use a concentration of 1 µg/ml. Detects a band of approximately 56 kDa (predicted molecular weight: 44 kDa).
ICC/IF		Use a concentration of 5 µg/ml.

ターゲット情報

機能	Plays an important role in caveolae formation and organization. Required for the sequestration of mobile caveolin into immobile caveolae. Termination of transcription by RNA polymerase I involves pausing of transcription by TTF1, and the dissociation of the transcription complex, releasing pre-rRNA and RNA polymerase I from the template. PTRF is required for dissociation of the ternary transcription complex.
関連疾患	Congenital generalized lipodystrophy 4
配列類似性	Belongs to the PTRF/SDPR family.
翻訳後修飾	Phosphorylated. Present in active and inactive forms. Changes in phosphorylation pattern may alter activity. Five truncated forms are found in the caveolae. These are thought to be the result of proteolysis and may be phosphorylation-dependent.
細胞内局在	Membrane > caveola. Cell membrane. Microsome. Endoplasmic reticulum. Cytoplasm > cytosol. Mitochondrion. Nucleus. Found at the surface of the caveolae. Also found in the plasma membrane, microsomal and cytosolic fractions and at a low level in the mitochondrial and nuclear fractions. Translocates to the cytoplasm from the caveolae upon insulin stimulation. CAV1 is necessary to recruit it to the cell membrane (By similarity). Co-localizes with CAV1 in lipid rafts in adipocytes.

画像



Western blot - Anti-PTRF antibody (ab78553)

All lanes : Anti-PTRF antibody (ab78553) at 1 µg/ml

Lane 1 : NIH 3T3 (Mouse embryonic fibroblast cell line) Whole Cell Lysate

Lane 2 : MEF1 (Mouse embryonic fibroblast cell line) Whole Cell Lysate

Lysates/proteins at 10 µg per lane.

Secondary

All lanes : Goat polyclonal to Rabbit IgG - H&L - Pre-Adsorbed (HRP) at 1/3000 dilution

Developed using the ECL technique.

Performed under reducing conditions.

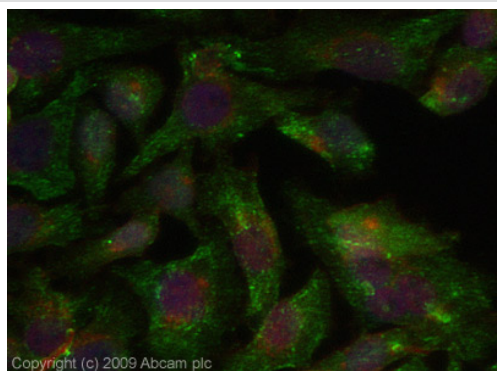
Predicted band size: 44 kDa

Observed band size: 56 kDa

Additional bands at: 14 kDa. We are unsure as to the identity of these extra bands.

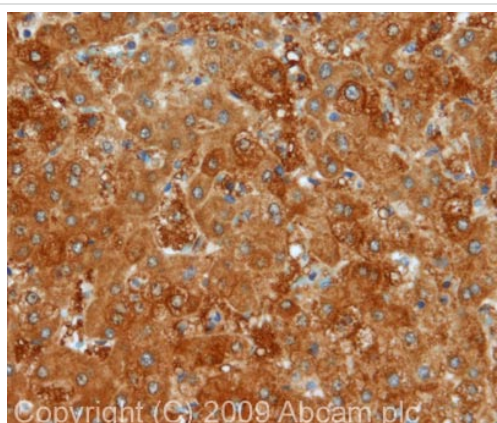
Exposure time: 3 minutes

PTRF contains a number of potential phosphorylation sites (SwissProt data) which may explain it running at a higher molecular weight than predicted. The 56 kDa band is comparable to molecular weights seen with other commercially available antibodies to PTRF.



Immunocytochemistry/ Immunofluorescence - Anti-PTRF antibody (ab78553)

ICC/IF image of ab78553 stained HeLa cells. The cells were 4% PFA fixed (10 min) and then incubated in 1%BSA / 10% normal Goat serum / 0.3M glycine in 0.1% PBS-Tween for 1h to permeabilise the cells and block non-specific protein-protein interactions. The cells were then incubated with the antibody (ab78553, 5µg/ml) overnight at +4°C. The secondary antibody (green) was Alexa Fluor® 488 Goat anti-Rabbit IgG (H+L) used at a 1/1000 dilution for 1h. Alexa Fluor® 594 WGA was used to label plasma membranes (red) at a 1/200 dilution for 1h. DAPI was used to stain the cell nuclei (blue) at a concentration of 1.43µM.



Immunohistochemistry (Formalin/PFA-fixed paraffin-embedded sections) - Anti-PTRF antibody (ab78553)

IHC image of PTRF staining in normal human liver formalin fixed paraffin embedded tissue section, performed on a Leica Bond™ system using the standard protocol F. The section was pre-treated using heat mediated antigen retrieval with sodium citrate buffer (pH6, epitope retrieval solution 1) for 20 mins. The section was then incubated with ab78553, 5ug/ml, for 15 mins at room temperature and detected using an HRP conjugated compact polymer system. DAB was used as the chromogen. The section was then counterstained with haematoxylin and mounted with DPX.

Please note: All products are "FOR RESEARCH USE ONLY AND ARE NOT INTENDED FOR DIAGNOSTIC OR THERAPEUTIC USE"

Our Abpromise to you: Quality guaranteed and expert technical support

- Replacement or refund for products not performing as stated on the datasheet
- Valid for 12 months from date of delivery
- Response to your inquiry within 24 hours
- We provide support in Chinese, English, French, German, Japanese and Spanish
- Extensive multi-media technical resources to help you
- We investigate all quality concerns to ensure our products perform to the highest standards

If the product does not perform as described on this datasheet, we will offer a refund or replacement. For full details of the Abpromise,

please visit <http://www.abcam.co.jp/abpromise> or contact our technical team.

Terms and conditions

- Guarantee only valid for products bought direct from Abcam or one of our authorized distributors