

Product datasheet

Anti-PRC1 antibody ab103096

画像数 1

製品の概要

製品名	Anti-PRC1 antibody
製品の詳細	Rabbit polyclonal to PRC1
由来種	Rabbit
アプリケーション	適用あり: WB
種交差性	交差種: Human
免疫原	Synthetic peptide conjugated to KLH, between internal sequence amino acids 178-207 of Human PRC1.
ポジティブ・コントロール	MDA-MB231 cell line

製品の特性

製品の状態	Liquid
保存方法	Shipped at 4°C. Store at 4°C (up to 6 months). Store at -20°C long term.
バッファー	Preservative: 0.09% Sodium Azide Constituents: PBS
精製度	Ammonium Sulphate Precipitation
特記事項(精製)	ab103096 is prepared by Saturated Ammonium Sulfate (SAS) precipitation followed by dialysis against PBS.
ポリ/モノ	ポリクローナル
アイソタイプ	IgG

アプリケーション

Our [Abpromise guarantee](#) covers the use of **ab103096** in the following tested applications.

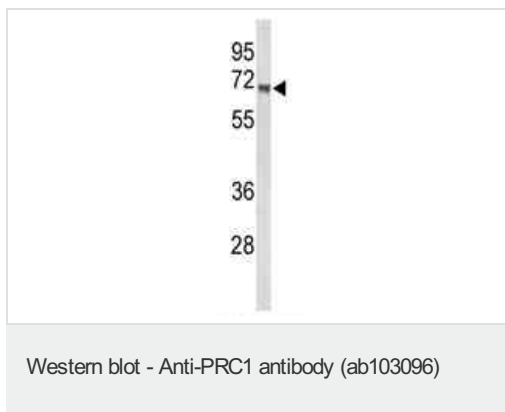
The application notes include recommended starting dilutions; optimal dilutions/concentrations should be determined by the end user.

アプリケーション	Abreviews	特記事項
WB		1/50 - 1/100. Predicted molecular weight: 72 kDa.

ターゲット情報

機能	Cross-links antiparallel microtubules at an average distance of 35 nM. Essential for controlling the spatiotemporal formation of the midzone and successful cytokinesis. Required for KIF14 localization to the central spindle and midbody.
配列類似性	Belongs to the MAP65/ASE1 family.
ドメイン	Microtubule binding occurs via a basic patch in the central spectrin-like domain and requires also the unstructured C-terminal domain.
翻訳後修飾	Phosphorylation by CDK1 in early mitosis holds PRC1 in an inactive monomeric state, during the metaphase to anaphase transition, PRC1 is dephosphorylated, promoting interaction with KIF4A, which then translocates PRC1 along mitotic spindles to the plus ends of antiparallel interdigitating microtubules. Dephosphorylation also promotes MT-bundling activity by allowing dimerization.
細胞内局在	Nucleus. Cytoplasm. Cytoplasm > cytoskeleton > spindle pole. Predominantly localized to the nucleus of interphase cells. During mitosis becomes associated with the mitotic spindle poles and localizes with the cell midbody during cytokinesis.

画像



Anti-PRC1 antibody (ab103096) at 1/50 dilution + MDA-MB231 cell lysate at 35 µg

Predicted band size: 72 kDa

Please note: All products are "FOR RESEARCH USE ONLY AND ARE NOT INTENDED FOR DIAGNOSTIC OR THERAPEUTIC USE"

Our Abpromise to you: Quality guaranteed and expert technical support

- Replacement or refund for products not performing as stated on the datasheet
- Valid for 12 months from date of delivery
- Response to your inquiry within 24 hours
- We provide support in Chinese, English, French, German, Japanese and Spanish
- Extensive multi-media technical resources to help you
- We investigate all quality concerns to ensure our products perform to the highest standards

If the product does not perform as described on this datasheet, we will offer a refund or replacement. For full details of the Abpromise, please visit <http://www.abcam.co.jp/abpromise> or contact our technical team.

Terms and conditions

- Guarantee only valid for products bought direct from Abcam or one of our authorized distributors